

Job Name: 26-1237 860558 Beulah Crossing Townhomes
 Job Location: Lexington, KY
 Contractor: Contech Engineering Solutions

Plant: Beaver Dam

Tech: S. Felletter

2/5/2026 1:26:27 PM

PC: T. Sekula



Structure ID: 10-CS-5

P4 MH060LD13-30ECC

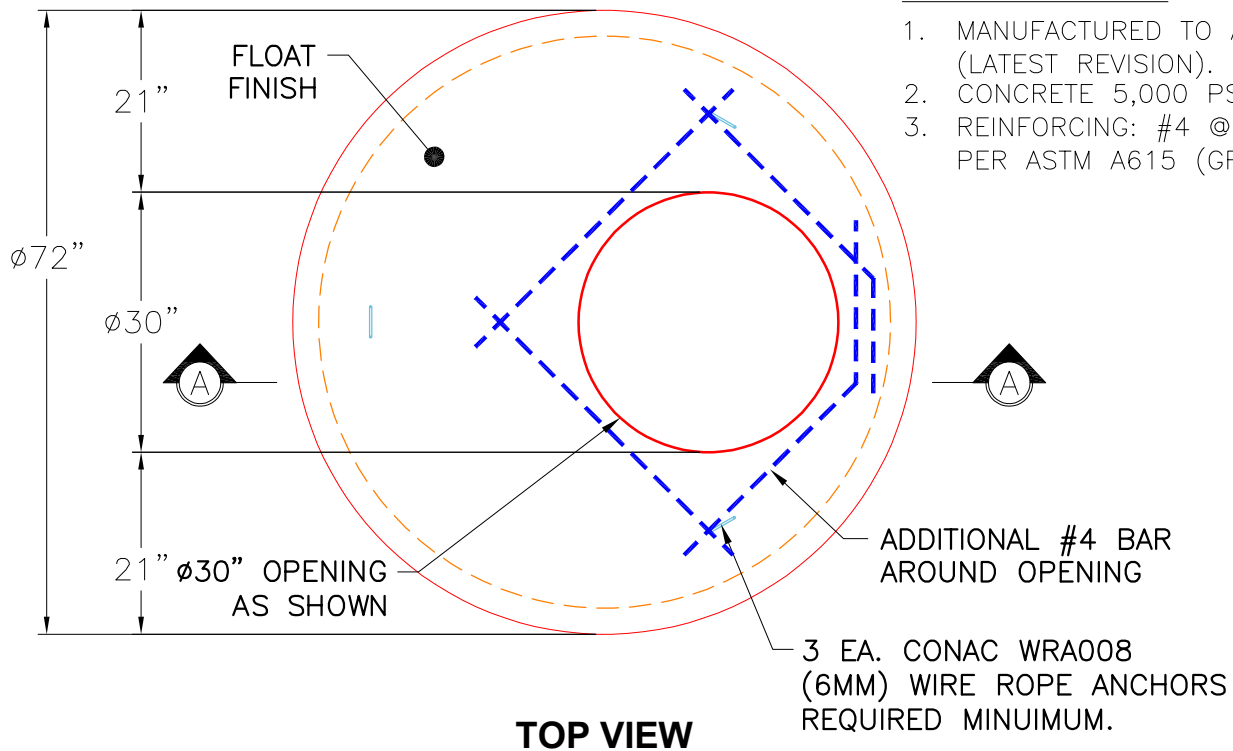
MH FLAT TOP SPEC. (30" ECC HOLE) F/G

- P5) 30" - CASTING HEIGHT - 0"
- P4) 60" - MH FLAT TOP SPEC. (30" ECC HOLE) F/G - 13"
- P3) 60" - MH RISER T/G - 24"
- P2) 60" - MH RISER T/G - 60"
- P1) 60" - MH BASE T/n - 18"
- 1) CVSTENCILING
- 1) ASSEMBLY REQUIRED
- 3) 60" - Conseal CS-102 1.00"
- 2) Hole - 20

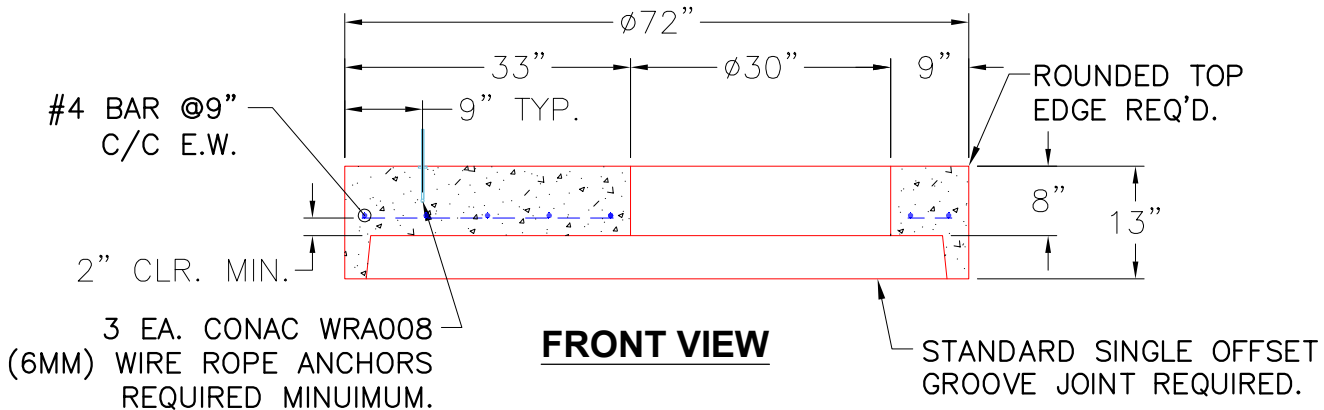
0 lb Structure Notes:
 2589 lb 4" CASTING BY OTHERS
 2505 lb
 5916 lb LIFTING ANCHORS TO BE INSTALLED
 4612 lb ON THE OUTSIDE OF THE STRUCTURE
 0 lb
 0 lb ICAST TO INSTALL THE INTERNALS
 0 lb
 0 lb
 0 lb
 Structure Total: 15623 lb CONTECH'S LOGO AS WELL AS THE
 INLET AND OUTLET MUST BE
 STENCILED ONTO THE STRUCTURE

GENERAL NOTES:

1. MANUFACTURED TO ASTM C-478 (LATEST REVISION).
2. CONCRETE 5,000 PSI AT 28 DAYS.
3. REINFORCING: #4 @ 9" O.C. E.W. PER ASTM A615 (GRADE 60)



TOP VIEW



FRONT VIEW

Coating (Int):
 Coating (Ext):

Seam Up: Flat
 Seam Dn: Groove

Wall Thickness: 6"

Height (Ext): 13"

Weight (Net): 2589 lb
 Volume (Net): 0.66cu.yd