

Job Name: 26-1232 - Mustang Village Apartments Ph.1  
 Job Location: Paducah, KY  
 Contractor: Wood Brothers

Plant: 100

4/24/2026 1:55:48 PM

Tech: Jared - F

PC: T. Lewis



**Structure ID: S6-6 ST-DBI**

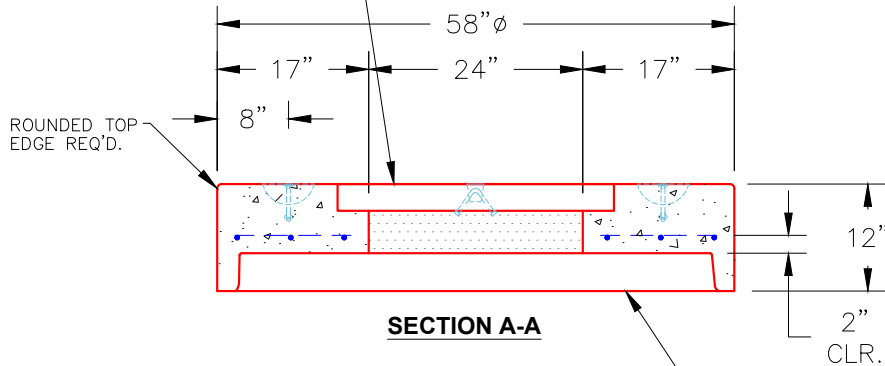
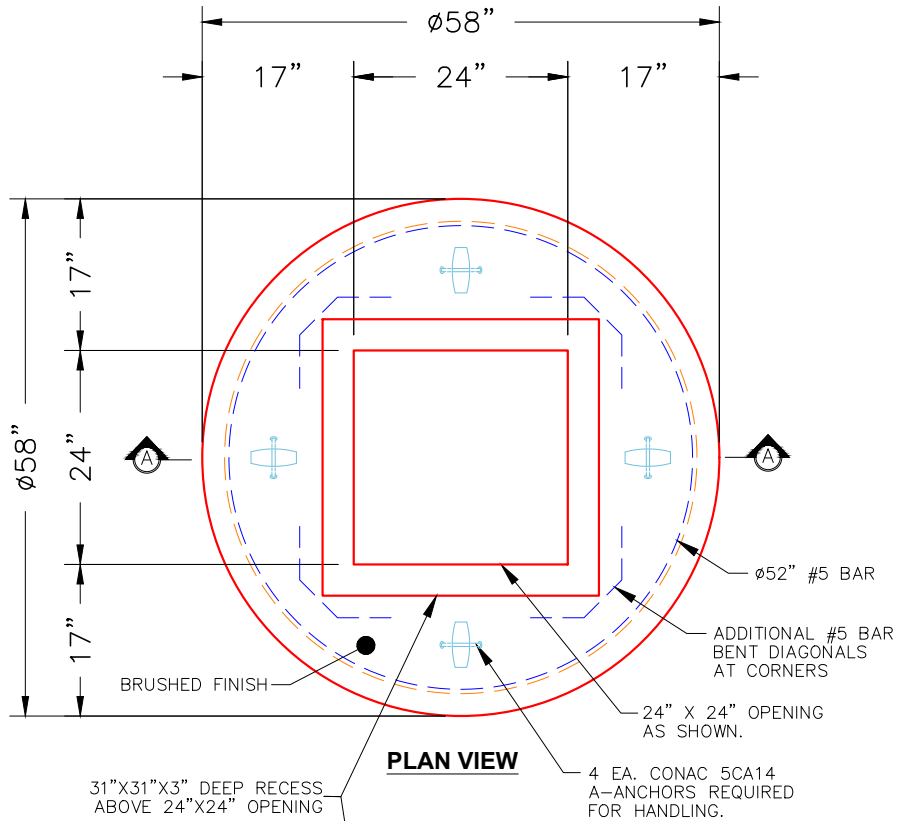
**P2 MH048LD12S**

**MH FLAT TOP SPECIAL**

- P3) CASTING HEIGHT - 0"
- P2) 48" - MH FLAT TOP SPECIAL - 12"
- P1) 48" - MH BASE Custom Ht - 45"
- 1) CASTING - HOE HOE-315 ANGLE F/G
- 1) 48" - Conseal CS-102 1.00"
- 1) Hole - 30
- 1) Hole - 24
- 1) Hole - 14

0 lb Structure Notes:  
 2660 lb 1. PER ASTM C478 SPECIFICATIONS.  
 3895 lb 2. CONCRETE = 4,000 PSI AT 28 DAYS.  
 258 lb 3. NO STEPS AND NO INVERT CHANNEL.  
 0 lb 4. CASTING BY ICAST (HOE-315 ANGLE F/G).  
 0 lb  
 0 lb REINFORCING PER ASTM A615 (GRADE 60).  
 0 lb - TOP SLAB (As .62) #5 BARS AT 6" C.C.E.W..  
 ----- - RISER/WALLS (As .12)  
 6814 lb - FLOOR (As .31) #5 BARS AT 12" C.C.E.W.

Structure Total:



**NOTES:**

- 1. MANUFACTURED TO ASTM C-478 (LATEST REVISION).
- 2. CONCRETE: 4,000 PSI AT 28 DAYS.
- 3. REINFORCING: #5 BAR @ 6" O.C. E.W. (GRADE 60).

Coating (Int): Coating (Ext):	Seam Up: Flat Seam Dn: Groove	Wall Thickness: 5"	Height (Ext): 12"	Weight (Net): 2660 lb Volume (Net): 0.68cu.yd
----------------------------------	----------------------------------	--------------------	-------------------	--