

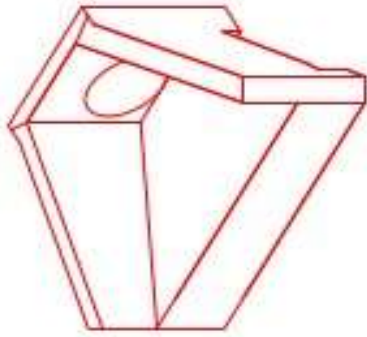


**Structure ID: S2-2 HW**

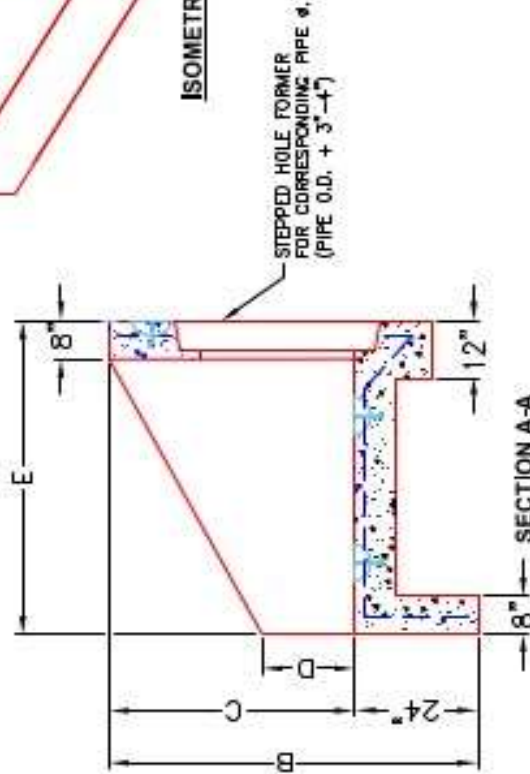
**P1 HWPC42**

**42" - PIPE CULVERT HEADWALL F/F**

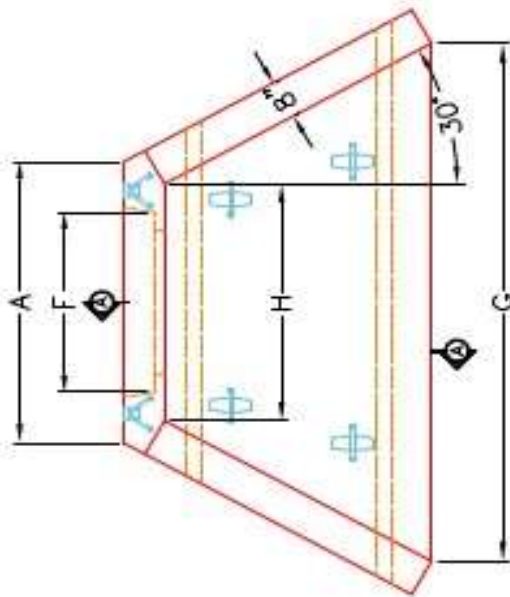
DIMENSIONS									
PIPE Ø	A	B	C	D	E	F	G	H	WEIGHT
36"	1'-4"	6'-4"	1'-4"	1'-4"	5'-0"	1'-6"	1'-8"	3'-4"	1,820 lbs.
36"	1'-4"	6'-4"	1'-4"	1'-4"	5'-0"	1'-6"	1'-8"	3'-4"	1,820 lbs.
42"	6'-4"	6'-7"	5'-5"	2'-4"	6'-5"	6'-6"	11'-1"	1'-11"	14,223 lbs.
42"	6'-4"	6'-7"	5'-5"	2'-4"	6'-5"	6'-6"	11'-1"	1'-11"	14,223 lbs.
54"	7'-4"	7'-4"	6'-4"	2'-4"	7'-4"	5'-4"	10'-8"	6'-0"	18,422 lbs.
60"	7'-4"	7'-4"	6'-4"	2'-4"	7'-4"	5'-4"	10'-8"	6'-0"	18,422 lbs.



**ISOMETRIC VIEW**

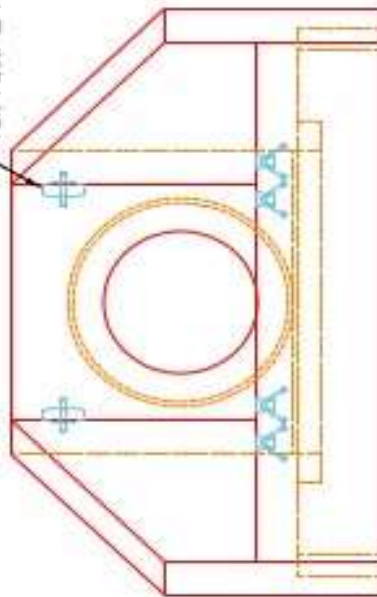


**SECTION A-A**



**PLAN VIEW**

"A"-ANCHOR LIFTING SYSTEM FOR PLANT & FIELD HANDLING.



**FRONT ELEVATION**

**NOTES:**

1. CONCRETE: KYTC APPROVED.
2. REINFORCING: #5 BAR @ 12" C/C E.W.-GRADE 60, (WITH 2" CONCRETE COVER MINIMUM)
3. REINFORCING BARS TO BE TACK WELDED OR TIED.
4. PIPE AND LIFTING ANCHOR POCKETS TO BE GROUTED WITH KYTC APPROVED NON-SHRINK GROUT.
5. DRAWING TO BE USED IN CONJUNCTION WITH KYTC STD. DRAWING RDH-110-02, RDH-210-03 AND THE STANDARD SPECIFICATIONS FOR ROAD AND BRIDGE CONSTRUCTION.
6. 3" CHAMFER ON ALL EXPOSED EDGES.
7. PERFORMED STEPPED HOLE SIZED AS PER O.D. OF PIPE + 3"-4".

APPROVED FOR DESIGN ONLY

**APPROVED**  
 1/20/2021 9:50 AM  
 INSTRUCTION



**INFRASTRUCTURE PRECAST, INC.**  
 601 WENTZ RD., MANASSAS, VA 20108  
 PHONE (703) 338-2200, FAX (703) 338-3800

KYTC 30"-60" PPE CULVERT HEADWALL

DRAWING NO. KYTC PC-HH DATED 12-14-20  
 DESIGNED BY: J.H. BASS, PE DRAWN BY: N. RICHARDS  
 WEB: WWW.ICASTING.COM SCALE: N/A