

Job Name: 26-1232 - Mustang Village Apartments Ph.1
 Job Location: Paducah, KY
 Contractor: Wood Brothers

Plant: 100
 4/21/2026 8:04:28 PM

Tech: Jared - F
 PC: T. Lewis



Structure ID: S15-15 ST-JB

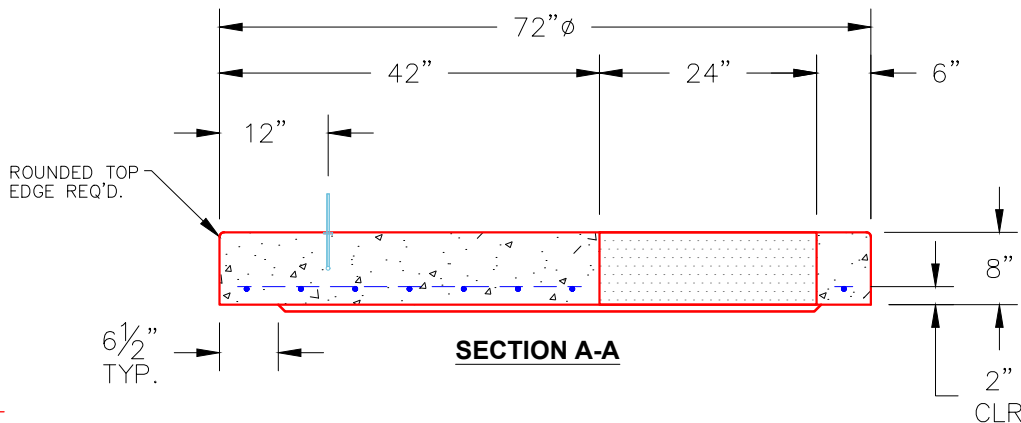
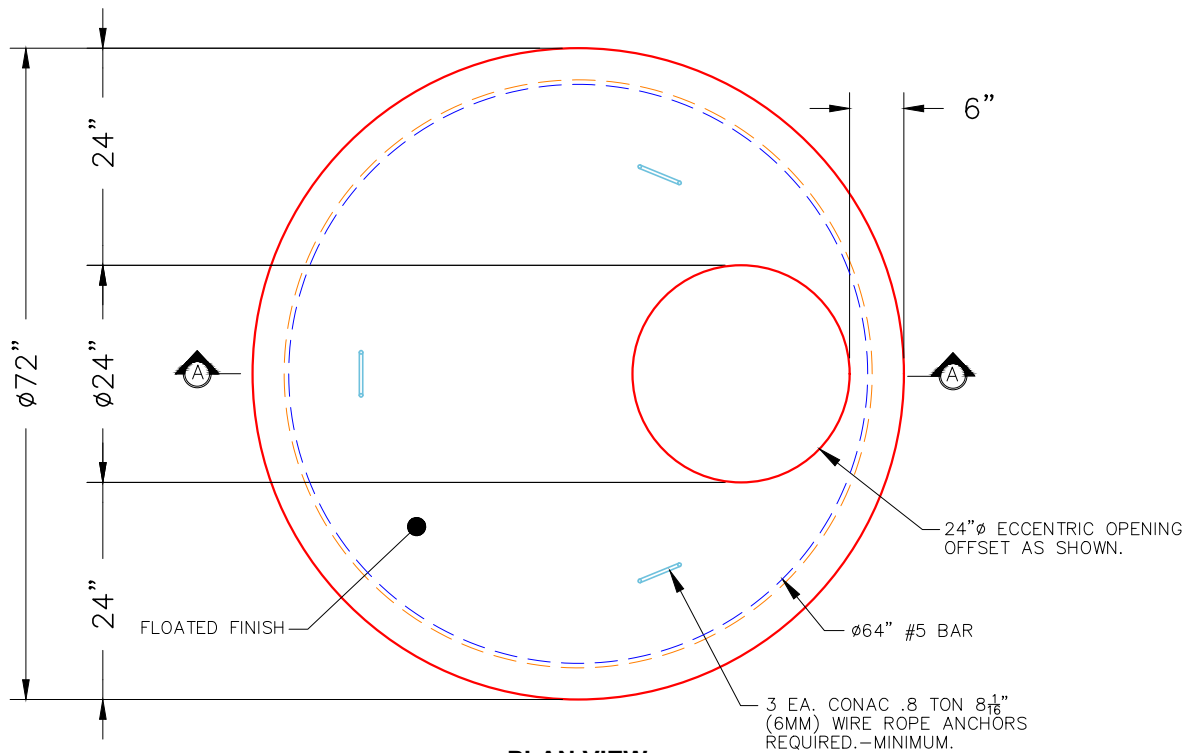
P2 MH060LD08

MH FLAT TOP w/ 24" ECC Hole F/F

- P3) 24" - CASTING HEIGHT - 7"
- P2) 60" - MH FLAT TOP w/ 24" ECC Hole F/F - 8"
- P1) 60" - MH BASE Custom Ht F/n - 44"
- 1) CASTING - HOE MC-375 F/C Storm
- 1) 60" - Conseal CS-102 1.00"
- 1) Hole - 38
- 2) Hole - 30
- 3) MH Step ML-10-TDS-NCR - 10"

0 lb
 2429 lb
 5977 lb
 271 lb
 0 lb
 0 lb
 0 lb
 0 lb
 0 lb
 Structure Total: 8677 lb

Structure Notes:
 1. PER ASTM C478 SPECIFICATIONS.
 2. CONCRETE = 4,000 PSI AT 28 DAYS.
 3. NO INVERT CHANNEL.
 4. CASTING BY ICAST (HOE MC-375 F/C STORM).
 REINFORCING PER ASTM A615 (GRADE 60).
 - TOP SLAB (As .62) #5 BARS AT 6" C.C.E.W..
 - RISER/WALLS (As .18)
 - FLOOR (As .37) #5 BARS AT 10" C.C.E.W.



- NOTES:**
1. MANUFACTURED TO ASTM C-478 (LATEST REVISION).
 2. CONCRETE: 4,000 PSI AT 28 DAYS.
 3. REINFORCING: #5 BAR @ 6" O.C. E.W. (GRADE 60).

Coating (Int): Coating (Ext):	Seam Up: Flat Seam Dn: Flat	Wall Thickness: 6"	Height (Ext): 8"	Weight (Net): 2429 lb Volume (Net): 0.62cu.yd
----------------------------------	--------------------------------	--------------------	------------------	--