

Job Name: 26-1232 - Mustang Village Apartments Ph.1
 Job Location: Paducah, KY
 Contractor: Wood Brothers

Plant: 100
 4/21/2026 8:04:27 PM

Tech: Jared - F
 PC: T. Lewis



Structure ID: S14-14 DBI13G

P2 BX048048-08TS015027

CB FT REDUCER 15"X27" HOLE T/F

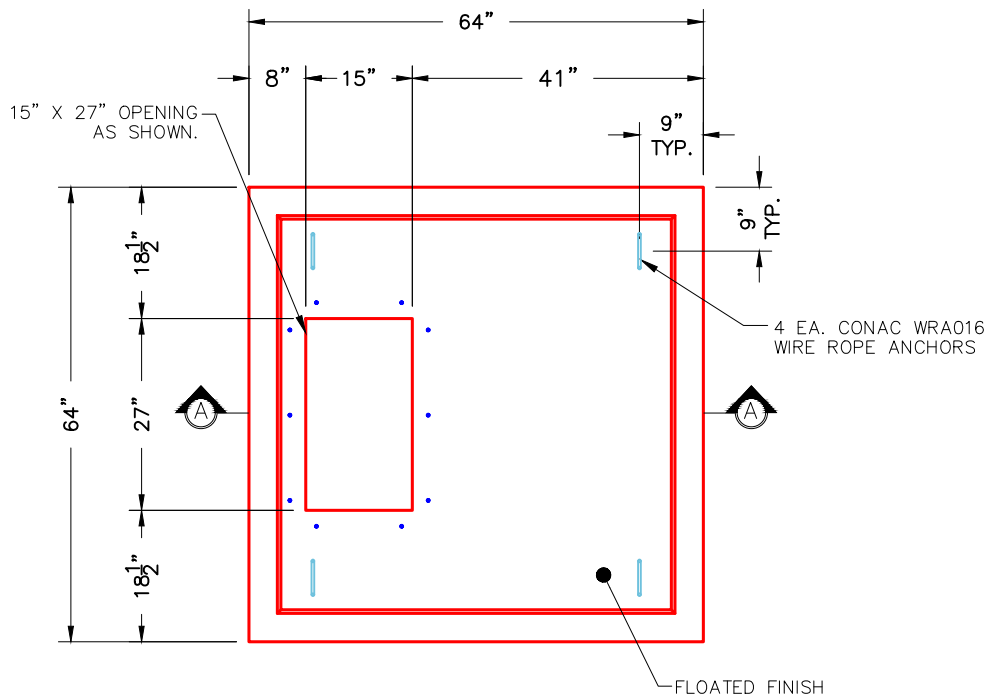
- P3) 15" x 27" - P.I.P. - BY OTHERS - 8"
- P2) 48" x 48" - CB FT REDUCER 15"X27" HOLE F/F - 8"
- P1) 48" x 48" - BOX BASE 8inW, 8inF F/n - 36"
- 1) CASTING - HOE KY-230-G F/G (GRADE)
- 1) 48" x 48" - Conseal CS-102 1.00"
- 1) 15" x 27" - Conseal CS-102 1.00"
- 1) DOGHOUSE INVRTD - 44"x42"
- 1) DOGHOUSE INVRTD - 20"x16"
- 1) DOGHOUSE INVRTD - 38"x36"
- 2) Hole - 4

0 lb
 1714 lb
 6035 lb
 237 lb
 0 lb
 0 lb
 0 lb
 0 lb
 0 lb
 0 lb
 0 lb
 0 lb

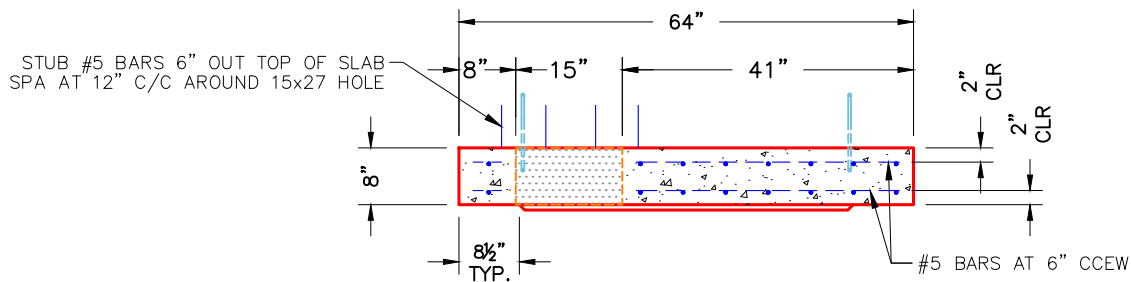
 Structure Total: 7986 lb

Structure Notes:
 1. KYTC DBI TYPE 13G / ASTM C-913 SPEC'S.
 2. CONCRETE = 4,000 PSI AT 28 DAYS.
 3. CASTING BY ICAST (HOE KY-230-G F/G (GRADE)).

REINFORCING PER ASTM A615 (GRADE 60).
 - TRANS. SLAB (As .62) #5 BARS AT 6" C.C.E.W. (DBL MAT).
 - WALLS (As .31) #5 BARS AT 12" C.C.E.W..
 - FLOOR (As .31) #5 BARS AT 12" C.C.E.W.



PLAN VIEW



SECTION A-A

NOTES:

1. MANUFACTURED TO ASTM C-913 (LATEST REVISION).
2. CONCRETE: 4,000 PSI AT 28 DAYS.
3. REINFORCING: #5 BAR @ 6" O.C. E.W. (DOUBLE MAT) (GRADE 60).

Coating (Int):
 Coating (Ext):

Seam Up: Flat
 Seam Dn: Flat

Wall Thickness: 8"

Height (Ext): 8"

Weight (Net): 1714 lb
 Volume (Net): 0.44cu.yd