

Job Name: 26-1232 - Mustang Village Apartments Ph.1  
 Job Location: Paducah, KY  
 Contractor: Wood Brothers

Plant: 100  
 4/21/2026 8:04:27 PM

Tech: Jared - F  
 PC: T. Lewis



**Structure ID: S13-13 DBI13G**

**P2 BX048048-08TS015027**

**CB FT REDUCER 15"X27" HOLE T/F**

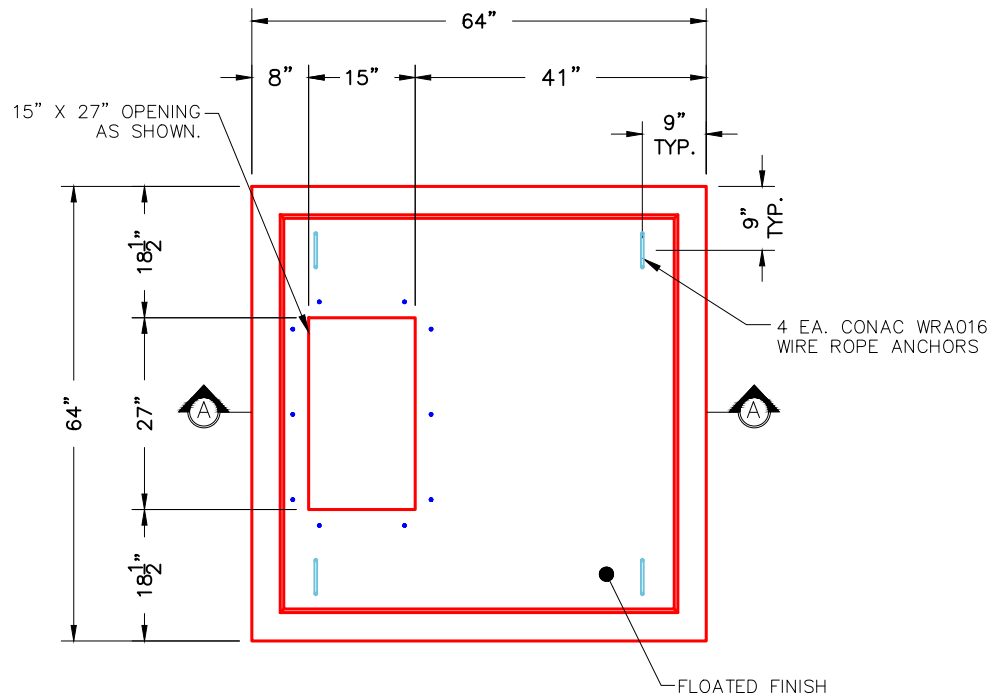
- P3) 15" x 27" - P.I.P. - BY OTHERS - 8"
- P2) 48" x 48" - CB FT REDUCER 15"X27" HOLE F/F - 8"
- P1) 48" x 48" - BOX BASE 8inW, 8inF, Variable Ht F/n - 56"
- 1) CASTING - HOE KY-230-G F/G (GRADE)
- 1) 48" x 48" - Conseal CS-102 1.00"
- 1) 15" x 27" - Conseal CS-102 1.00"
- 2) Hole - 44
- 1) Hole - 30
- 2) Hole - 4

0 lb  
 2478 lb  
 8525 lb  
 237 lb  
 0 lb  
 0 lb  
 0 lb  
 0 lb  
 0 lb  
 0 lb

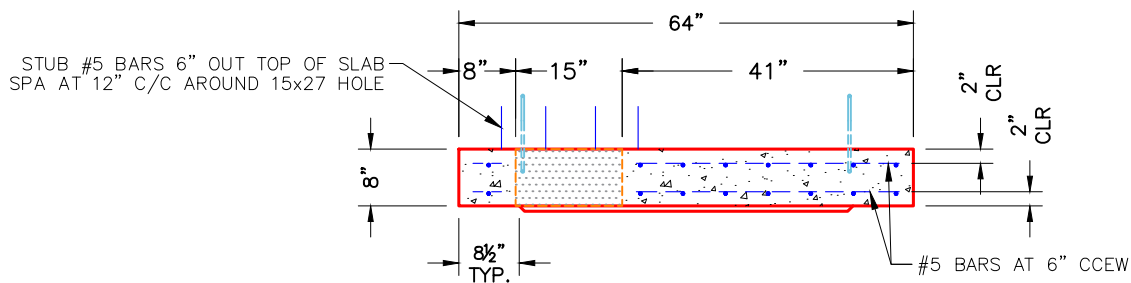
Structure Total: 11239 lb

**Structure Notes:**

1. KYTC DBI TYPE 13G / ASTM C-913 SPEC'S.
  2. CONCRETE = 4,000 PSI AT 28 DAYS.
  3. CASTING BY ICAST (HOE KY-230-G F/G (GRADE)).
- REINFORCING PER ASTM A615 (GRADE 60).  
 - TRANS. SLAB (As .62) #5 BARS AT 6" C.C.E.W. (DBL MAT).  
 - WALLS (As .31) #5 BARS AT 12" C.C.E.W..  
 - FLOOR (As .31) #5 BARS AT 12" C.C.E.W.



**PLAN VIEW**



**SECTION A-A**

**NOTES:**

1. MANUFACTURED TO ASTM C-913 (LATEST REVISION).
2. CONCRETE: 4,000 PSI AT 28 DAYS.
3. REINFORCING: #5 BAR @ 6" O.C. E.W. (DOUBLE MAT) (GRADE 60).

Coating (Int):  
 Coating (Ext):

Seam Up: Flat  
 Seam Dn: Flat

Wall Thickness: 8"

Height (Ext): 8"

Weight (Net): 2478 lb  
 Volume (Net): 0.63cu.yd