

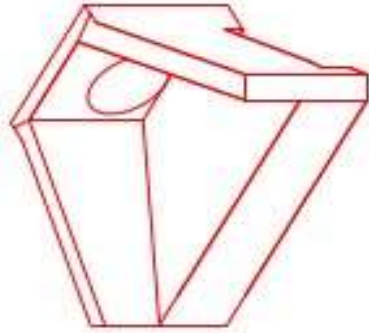


Structure ID: S12-12 HW

P1 HWPC36

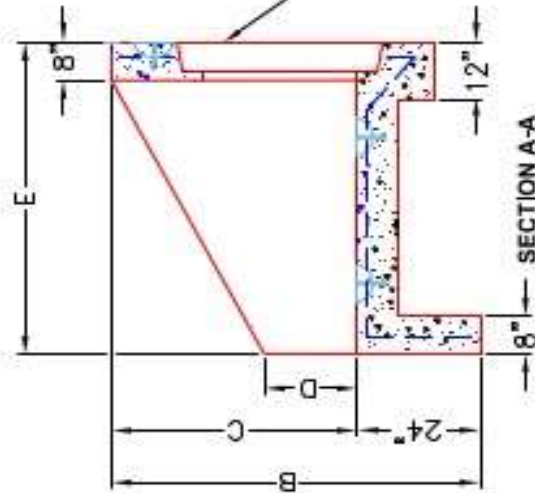
36" - PIPE CULVERT HEADWALL F/F

DIMENSIONS									
PIPE Ø	A	B	C	D	E	F	G	H	WEIGHT
36"	7'-4"	6'-4"	4'-0"	1'-4"	5'-0"	7'-6"	1'-8"	3'-4"	6,820 lbs.
42"	7'-4"	6'-4"	4'-0"	1'-4"	5'-0"	7'-6"	1'-8"	3'-4"	6,820 lbs.
48"	7'-4"	6'-4"	5'-5"	2'-4"	6'-5"	6'-6"	1'-8"	4'-11"	13,233 lbs.
54"	7'-4"	6'-4"	5'-5"	2'-4"	6'-5"	5'-5"	1'-8"	4'-11"	13,233 lbs.
60"	7'-4"	7'-0"	6'-0"	2'-4"	7'-4"	5'-0"	0'-8"	6'-0"	16,427 lbs.
	7'-4"	7'-0"	6'-0"	2'-4"	7'-4"	7'-4"	0'-8"	6'-0"	16,427 lbs.

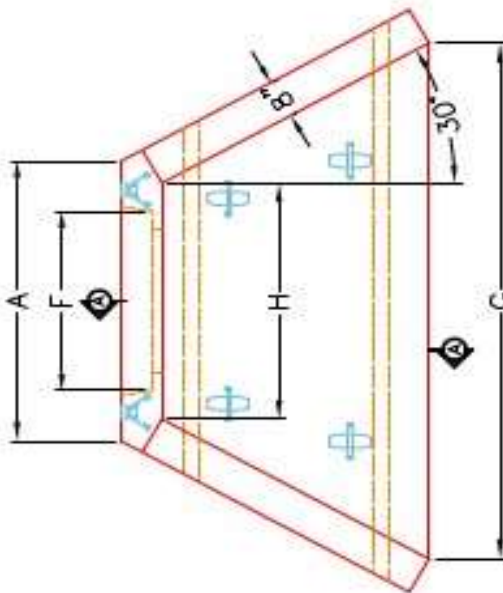


ISOMETRIC VIEW

STEPPED HOLE FORMER FOR CORRESPONDING PIPE Ø.
 (PIPE O.D. + 3"-4")

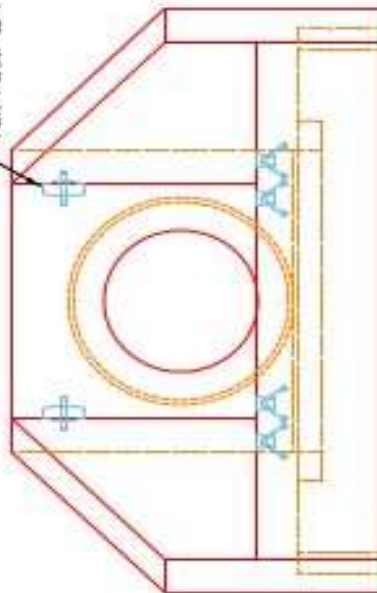


SECTION A-A



PLAN VIEW

"A-ANCHOR" LIFTING SYSTEM FOR PLANT & FIELD HANDLING.



FRONT ELEVATION

NOTES:

1. CONCRETE: KYTC APPROVED.
2. REINFORCING: #5 BAR @ 12" C/C E.W. - GRADE 60, (WITH 2" CONCRETE COVER MINIMUM)
3. REINFORCING BARS TO BE TACK WELDED OR TIED.
4. PIPE AND LIFTING ANCHOR POCKETS TO BE GROUTED WITH KYTC APPROVED NON-SHRINK GROUT.
5. DRAWING TO BE USED IN CONJUNCTION WITH KYTC STD. DRAWING RDH-110-02, RDH-210-03 AND THE STANDARD SPECIFICATIONS FOR ROAD AND BRIDGE CONSTRUCTION.
6. 3" CHAMFER ON ALL EXPOSED EDGES.
7. PREFORMED STEPPED HOLE SIZED AS PER O.D. OF PIPE + 3"-4".

APPROVED FOR DESIGN ONLY

APPROVED
 SUPERVISOR'S SIGNATURE
 DATE: 1/20/2021 9:50 AM
 KYTC DIVISION OF CONSTRUCTION INSTRUCTION



INFRASTRUCTURE PRECAST, INC.
 601 WEST 7TH ST., MANASSAS, VA 20108
 PHONE: (703) 796-2266, FAX: (703) 796-1616

KYTC 30" - 60" PPE CULVERT HEADWALL	
DESIGNED BY: J.J. RASCH, PE	DATE: 12-14-20
DRAWN BY: H. RICHARDS	SCALE: N/A
WEB: WWW.ICAST.COM	