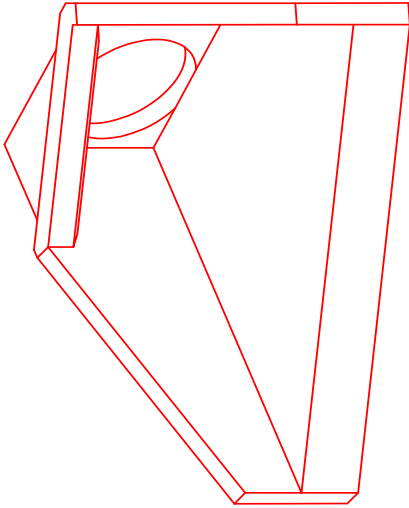




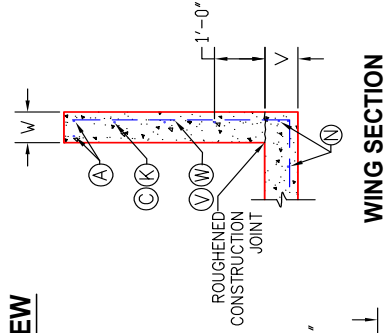
**Structure ID: S1-1 HW**

**P1 HWPCCUS**

**42" - PIPE CULVERT HEADWALL CUSTOM F/F**

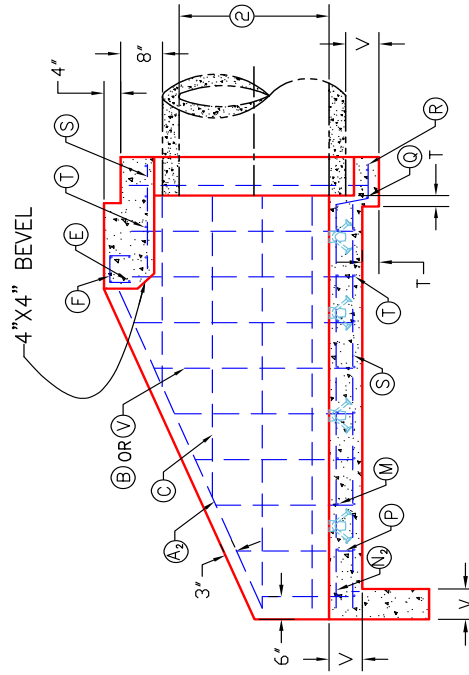


**ISOMETRIC VIEW**

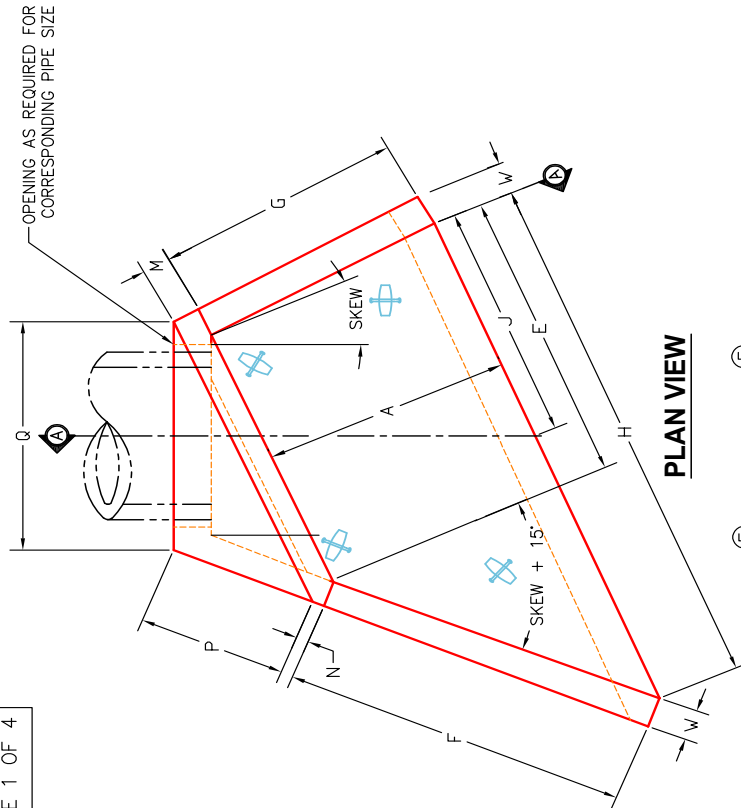


**WING SECTION**

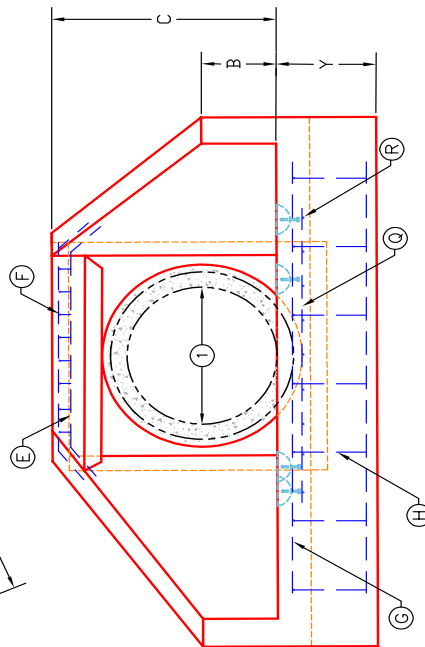
This will be 3-Stage Pour  
 1st = Base slab w/ Toe & Heel  
 2nd = Walls/Wings  
 3rd = Partial Top



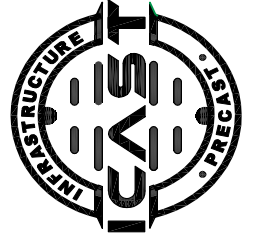
**SECTION A-A**



**PLAN VIEW**



**ELEVATION VIEW**



**INFRASTRUCTURE PRECAST, INC.**  
 981 WEST 7TH ST., BEAVER DAM, KY. 42320  
 PHONE: (270) 363-2238, FAX: (270) 298-7424

KYTC PRECAST 30" - 60" PIPE CULVERT  
 HEADWALLS WITH SKEW  
 (15° - 30° & 45° SKEWS)

DRAWING NO.: ET-KYTC-111 DATE: 01-17-25  
 REVIEWED BY: J.H. ROSS, PE DRAWN BY: N. RICHARDS  
 WEB: WWW.ICASTINC.COM SCALE: NTS

**NOTES:**

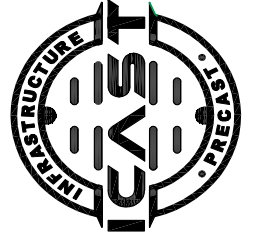
- DIAMETER OF CIRCULAR PIPE OR SPAN OF NON-CIRCULAR PIPE.
- DIAMETER OF CIRCULAR PIPE OR RISE OF NON-CIRCULAR PIPE.
- FOR DIMENSIONS, QUANTITIES AND BILL OF REINFORCEMENT, SEE CURRENT STANDARD DRAWINGS: RDH-120-02, RDH-200 AND RDH-300 SERIES
- DIMENSIONS FROM FACE OF CONCRETE TO STEEL SHALL BE 2" CLEAR DISTANCE.
- ENCIRCLED LETTERS, O, INDICATE STEEL BAR LOCATIONS.
- BARS (B), (C), (P), (M), (V) ARE SPACED 12" O.C. ALL OTHER BARS SHALL BE EVENLY SPACED.
- BARS (B), (C) AND (V) ARE PLACED IN ORDER OF INCREASING LENGTHS, BEGINNING AT THE END OF EACH WING.
- BARS (C) ARE PLACED IN ORDER OF INCREASING LENGTHS, BEGINNING AT THE TOP OF EACH WING.
- HEADWALLS LOCATED AT SHOULDER EDGE SHALL BE PARALLEL TO THE CENTERLINE OF ROADWAY.
- APRON BETWEEN WINGS SHALL BE SLOPED IN DIRECTION OF FLOW EQUAL TO SLOPE OF PIPE. FRONT FACE OF HEADWALL AND ENDS OF WINGS SHALL REMAIN VERTICAL.



**Structure ID: S1-1 HW**

**P1 HWPCCUS**

**42" - PIPE CULVERT HEADWALL CUSTOM F/F**



DIMENSIONS	DIAMETER OF PIPE		DIMENSIONS	
	30"	36"		42"
A	4'-5"	5'-0"	5'-7"	6'-2"
B	1'-3"	1'-6"	1'-9"	2'-0"
C	3'-10"	4'-4"	4'-11"	5'-5"
E	5'-11"	7'-1"	8'-3"	9'-4"
F	8'-10"	10'-0"	11'-2"	12'-4"
G	4'-7"	5'-2"	5'-9"	6'-5"
H	14'-9"	17'-1"	19'-5"	21'-8"
J	7'-9"	8'-11"	10'-1"	11'-3"
M		0'-6"		
N		0'-2"		
P	4'-10"	5'-8"	6'-6"	7'-4"
Q	3'-5"	4'-0"	4'-7"	5'-2"
R		0'-10"		
T	0'-3.5"	0'-4.0"	0'-4.5"	0'-5.0"
V		0'-8"		
W		0'-8"		
X		----		
Y		2'-0"		
Z		----		
CONCRETE (LBS.)	9,709	12,626	15,895	19,516
REINF. STEEL (LBS.)	237	290	342	398

DIMENSIONS AND QUANTITIES ARE BASED ON ONE HEADWALL & CONCRETE PIPE AND WILL VARY FOR CORRUGATED METAL PIPE.

**INFRASTRUCTURE PRECAST, INC.**  
 981 WEST 7TH ST., BEAVER DAM, KY. 42320  
 PHONE: (270) 363-2238, FAX: (270) 298-7424

DIMENSIONS & QUANTITIES  
 30"-48" HEADWALLS  
 CIRCULAR PIPE  
 45° SKEW

DRAWING NO.: ET-KYTC-111 DATE: 01-17-25  
 REVIEWED BY: J.H. ROSS, PE DRAWN BY: N. RICHARDS  
 WEB: WWW.ICASTINC.COM SCALE: NTS