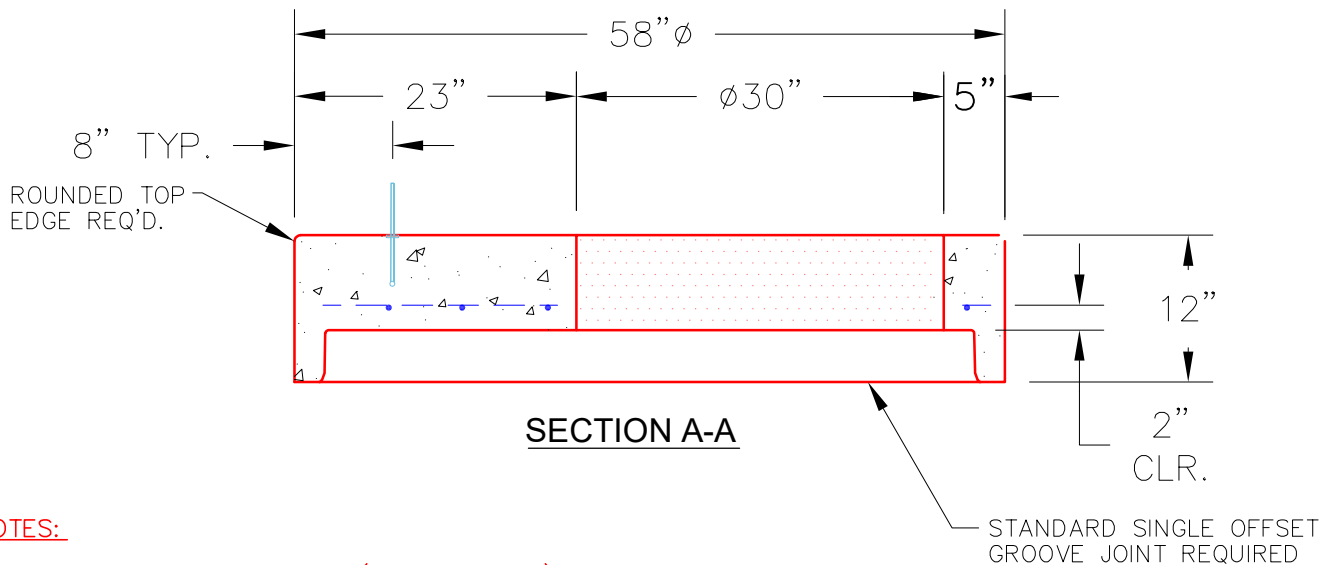
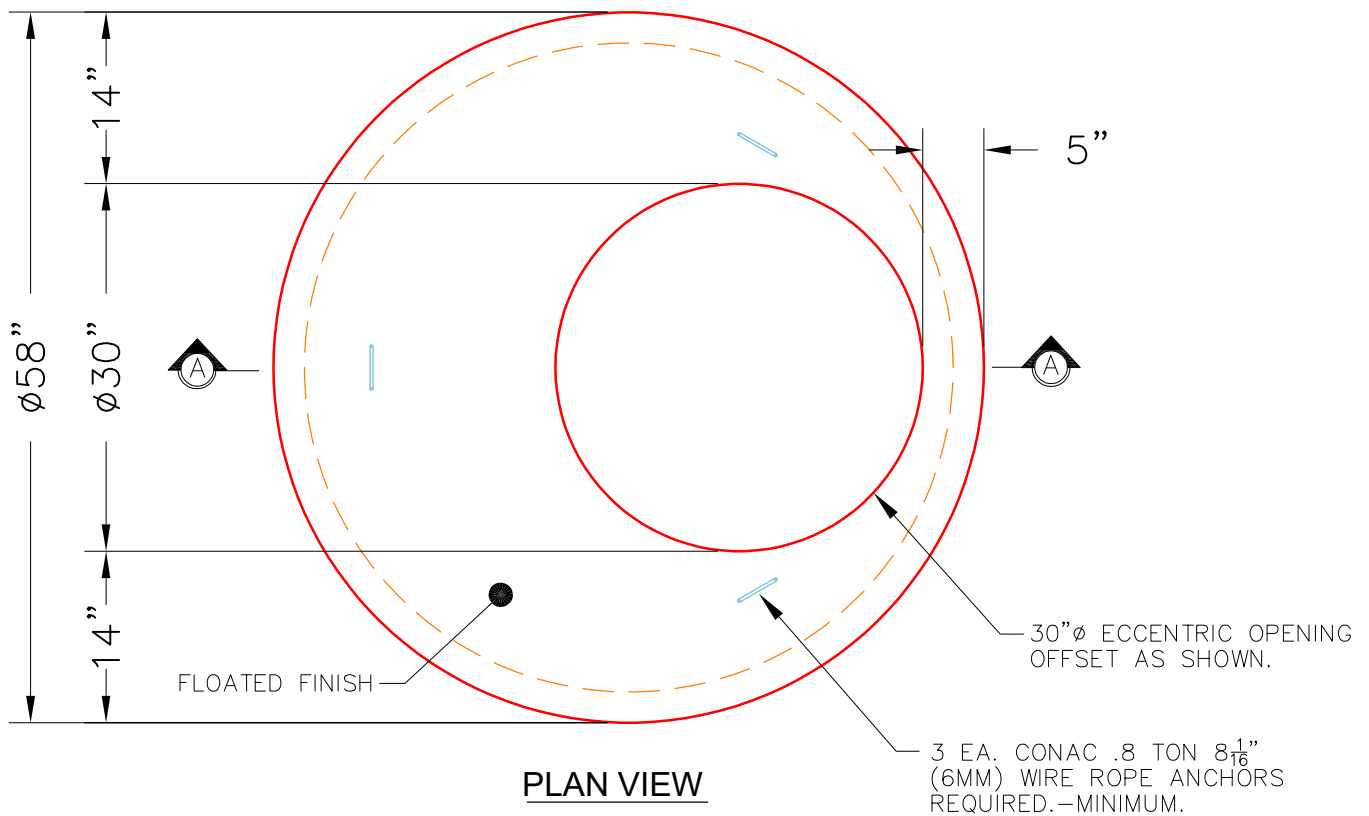


THIS DRAWING IS INTENDED TO BE PRINTED IN COLOR.



NOTES:

1. MANUFACTURED TO ASTM C-478 (LATEST REVISION).
2. CONCRETE: 5,000 PSI AT 28 DAYS.
3. REINFORCING: #4 BAR @ 10" O.C. E.W. (GRADE 60).

PRODUCTION WORK ORDER		PRODUCT I.D.: MH048LD12S	DESCRIPTION: 48" ϕ X 12" MH TOP SLAB SPECIAL	
QUALITY CONTROL CHECKLIST <input type="checkbox"/> ALL DIMENSIONS CORRECT. <input type="checkbox"/> LIFTERS INSTALLED. <input type="checkbox"/> HOLE LOCATION CORRECT. <input type="checkbox"/> REINFORCING CORRECT. <input type="checkbox"/> FINISH ON SLAB SURFACE UNIFORM. <input type="checkbox"/> OUTSIDE TOP EDGE TROWELLED. <input type="checkbox"/> GROOVE JOINT INSTALLED.	PRODUCT VIEW: RIGHT SIDE UP	CUSTOMER: CONTECH ENGINEERING SOLUTIONS		
	PLANT: BEAVER DAM, KY.	PROJECT: 828680 NINTH & O BAPTIST CHURCH		
	WEIGHT: 1,413 LBS.	STRUCTURE: 10-CS-4		
	TOP SECTION JOINT: N/A	QUOTE/SALES ORDER NO: 26-1231		
	BASE SECTION JOINT: GROOVE	PC: T. SEKULA	DRAWING: S. FELLETER	
QC CHECK INITIALS:	DATE: 02/03/26	SCALE: NTS	PG. 1 of 1	