

Structure ID: OCS-11-54 CB2-3

P2 BX3636-08R60

BOX RISER 8inW F/G

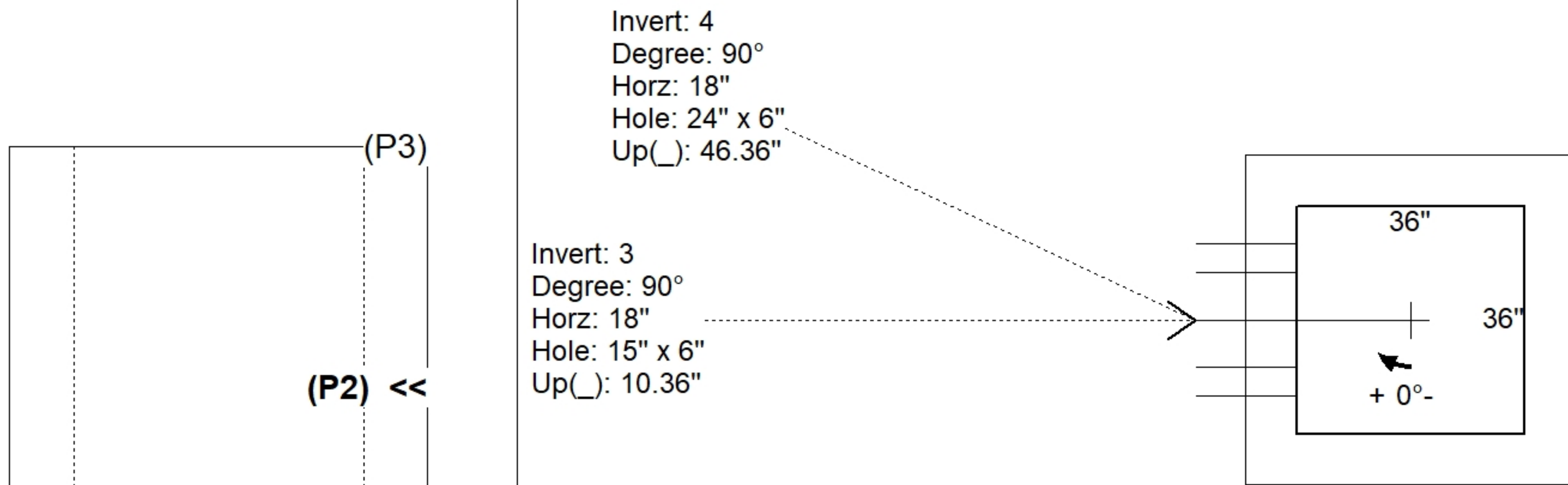
P3) 36" x 36" - CASTING HEIGHT - 0" P2) 36" x 36" - BOX RISER 8inW F/G - 60" P1) 36" x 36" - BOX BASE 8inW, 8inF, Variable Ht T/n - 42" 1) CASTING - TRASHRACKS LFS-3636-P SQ. Flush Mount Grate 2) 36" x 36" - Conseal CS-102 1.00" 1) Hole - 30 1) Hole - 12 1) Weir n/n - 15"x6" 1) Weir n/n - 24"x6"	0 lb 6932 lb 6227 lb 195 lb 0 lb 0 lb 0 lb 0 lb 0 lb 0 lb	Structure Total: 13354 lb
--	--	---------------------------

Structure Notes:
 PLAN LABEL: 11
 1. LFS-3636-P SQ. FLUSH MOUNT GRATE PROVIDED BY ICAST.
 2. PER ASTM C913 SPECIFICATIONS.
 3. CONCRETE = 4,500 PSI AT 28 DAYS.
 4. REINFORCING PER ASTM A615 (GRADE 60).
 - RISER/WALLS (As .12)
 - FLOOR (As .31) #5 BARS AT 12" C.C.E.W.

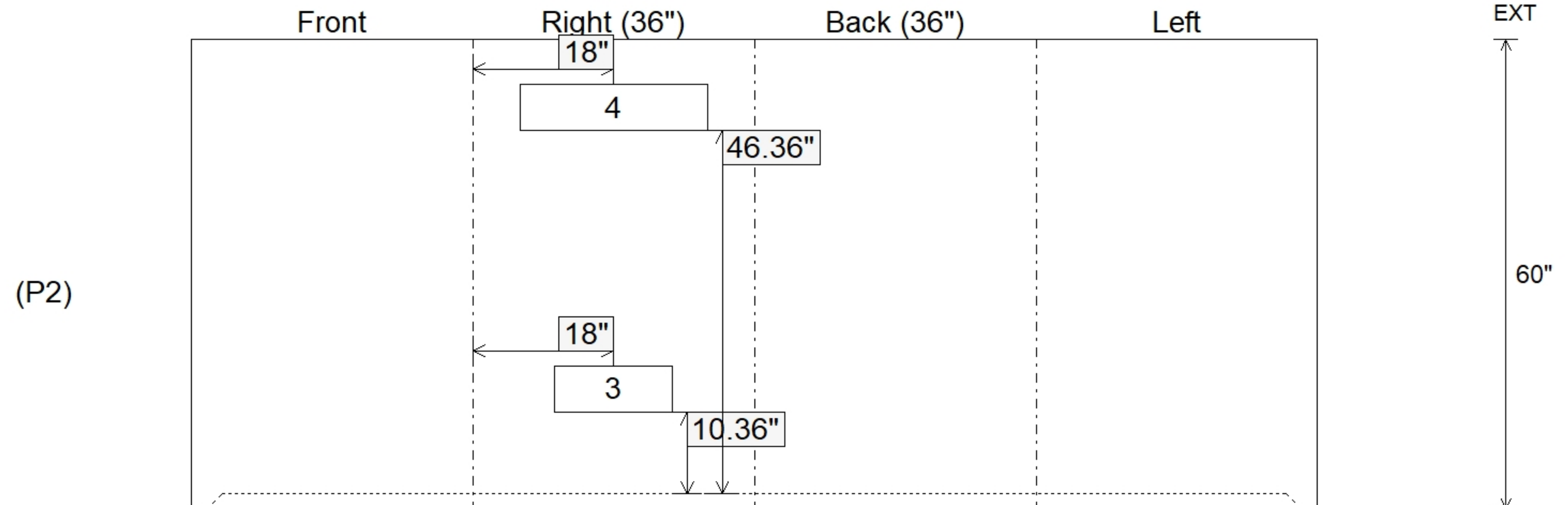
Rim: 848' Rim to Invert: 8.53' Slack: 0.358" Sump: 0" Step Position:

Position	Elev	Angle	Ext. (cw)	Pipe	Pipe OD	Connector	Hole	Horz Size	Up ()	Offset
Invert 1										
Invert 2										
Invert 3	844'	90°	26"	15" x 6" Weir	15" x 6"	Weir 15"x6"	15" x 6"	15"	10.36"	0"
Invert 4	847'	90°	26"	24" x 6" Weir	24" x 6"	Weir 24"x6"	24" x 6"	24"	46.36"	0"
Invert 5										
Invert 6										
Invert 7										
Invert 8										

RIGHT-SIDE UP VIEW (int. dimensions)



INSIDE WALL DIMENSIONS



Coating (Int):	Seam Up: Flat Seam Dn: Groove	Wall Thickness: 8" Floor Height: 0"	Height (Int): 60" Height (Ext): 60"	Weight (Net): 6932 lb Volume (Net): 1.77cu.yd
----------------	----------------------------------	--	--	--