

Job Name: 26-1222 Woodvale Subdivision Ph.120-211-300
 Job Location: Erlanger, KY
 Contractor: Mago Construction Co. LLC

Plant: 100
 2/27/2026 12:42:40 PM

Tech: Jared - A
 PC: Celina Goff



Structure ID: MH-100-28 SS-MH

P3 GR6

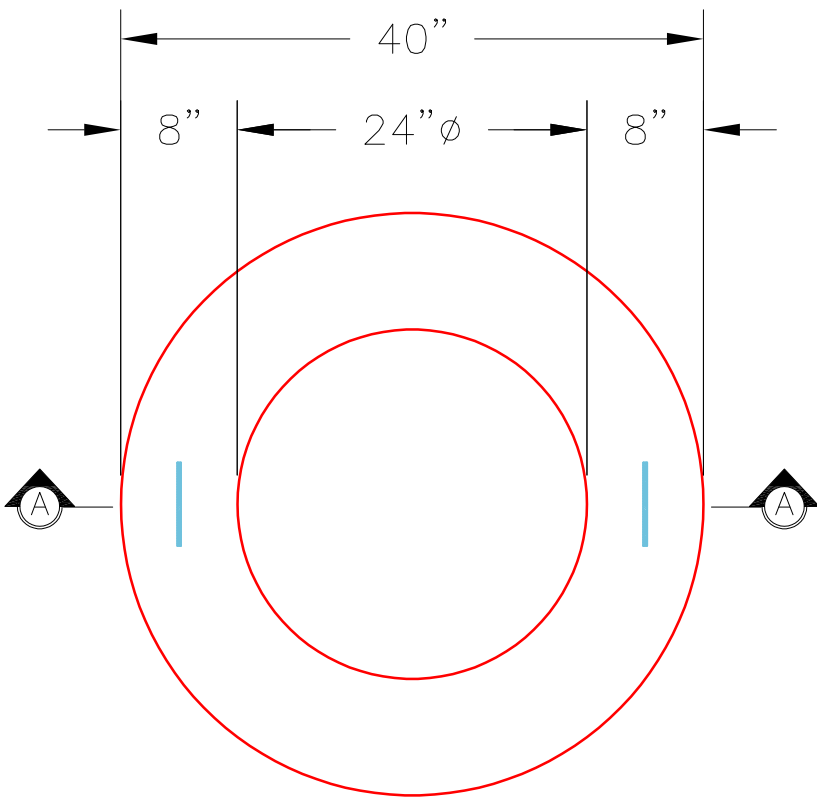
GRADE RING F/F

- P4) 24" - CASTING HEIGHT - 7"
- P3) 24" - GRADE RING F/F - 6"
- P2) 48" - CON CONE w/24" HOLE F/G - 36"
- P1) 48" - MH BASE (08"F) T/n - 36"
- 1) 48" - MH INVERT CHANNEL - FULL HEIGHT
- 1) CASTING - HOE MC-375 F/C Sanitary
- 1) 48" - Conseal CS-102 1.00" (Double)
- 2) PSX - 16Y DD
- 3) Z-Lok - C107-1
- 5) MH Step ML-10-TDS-NCR - 10"

0 lb
 405 lb
 2252 lb
 4089 lb
 1440 lb
 271 lb
 0 lb
 15 lb
 3 lb
 0 lb

 Structure Total: 8476 lb

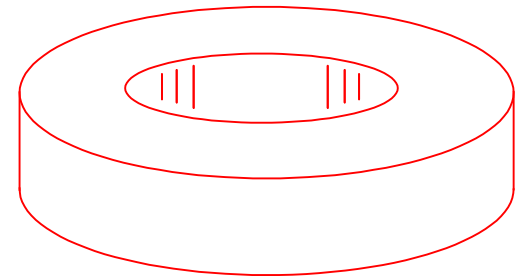
- Structure Notes:**
 PLAN LABEL: 100
1. HOE MC-375 F/C SANITARY PROVIDED BY ICAST.
 2. PER ASTM C478 SPECIFICATIONS.
 3. CONCRETE = 4,000 PSI AT 28 DAYS.
 4. REINFORCING PER ASTM A615 (GRADE 60).
 - CONE (As .12)
 - BASE WALL W/ DBL. AS 0.12
 - FLOOR (AS .40)



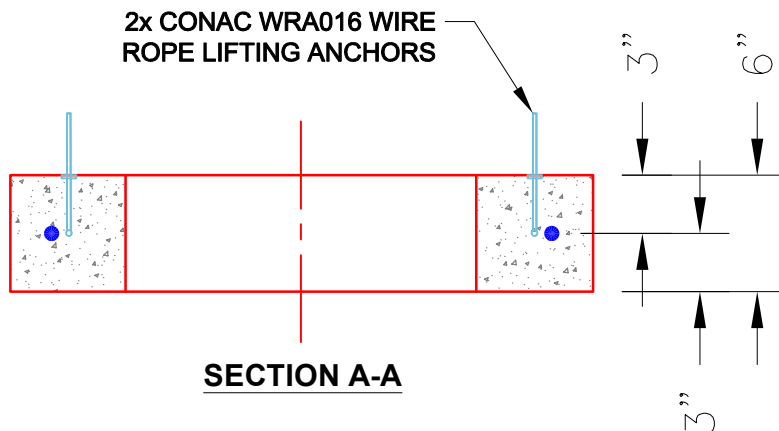
PLAN VIEW

NOTES:

1. GRADE RINGS MEET OR EXCEED THE FOLLOWING SPECIFICATIONS
 - CONCRETE: 4,000 PSI @ 28 DAYS
 - REINFORCING: (1) #3 HOOP CENTERED (GRADE 60)
2. WEIGHT: 6" 405 LBS.



ISOMETRIC VIEW



SECTION A-A

Coating (Int):
 Coating (Ext):

Seam Up: Flat
 Seam Dn: Flat

Wall Thickness: 8"

Height (Ext): 6"

Weight (Net): 405 lb
 Volume (Net): 0.1cu.yd