

Structure ID: CB-92-16 CB3A

P1 BX2424-08BAVF BOX BASE 8inW, 8inF, Variable Ht T/n

P3) 24" x 24" - CASTING HEIGHT - 3.50" P2) 24" x 24" - BOX RISER 8inW F/G - 24" P1) 24" x 24" - BOX BASE 8inW, 8inF, Variable Ht T/n - 41" 1) CASTING - HOE 410 F/G 2) 24" x 24" - Conseal CS-102 1.00" 1) Hole - 18	0 lb 2062 lb 4426 lb 228 lb 0 lb 0 lb ----- Structure Total: 6716 lb
---	---

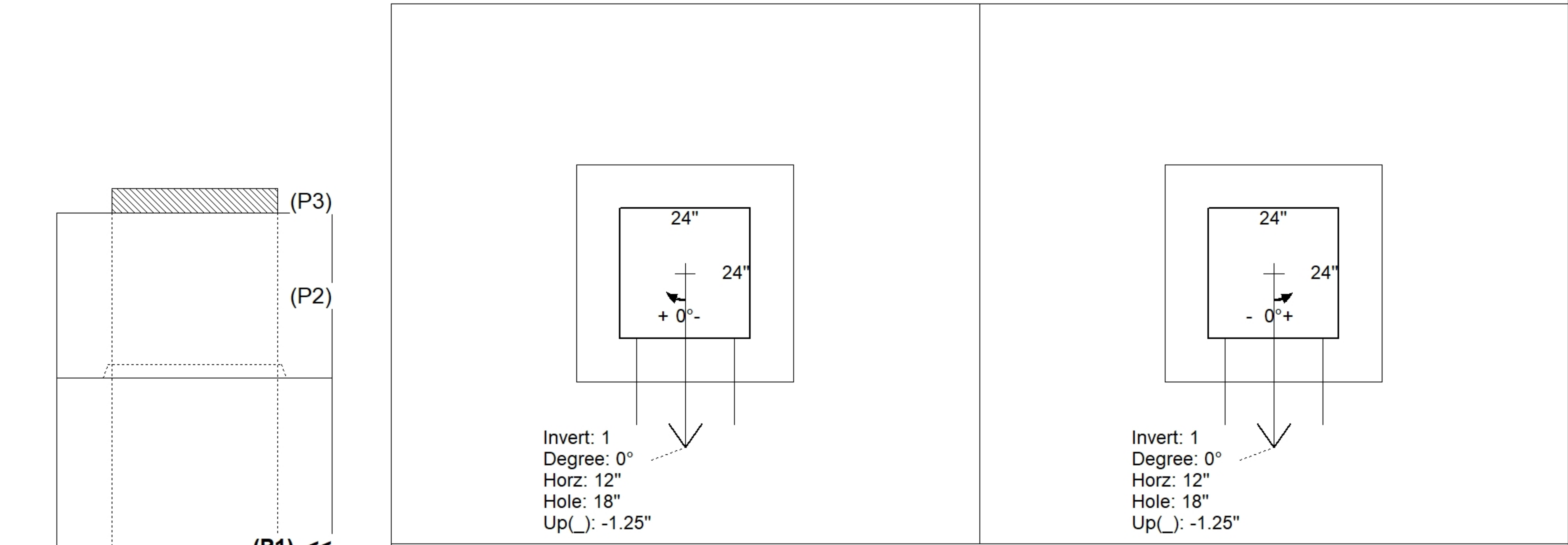
Structure Notes:
 PLAN LABEL: 92
 1. HOE 410 F/G PROVIDED BY ICAST.
 2. PER ASTM C913 SPECIFICATIONS.
 3. CONCRETE = 4,000 PSI AT 28 DAYS.
 4. NO INVERT CHANNEL.
 5. REINFORCING PER ASTM A615 (GRADE 60).
 - WALLS (As .12) #5 BARS AT 12" C.C.E.W.
 - FLOOR (As .12) #5 BARS AT 12" C.C.E.W.

Rim: 900.61' Rim to Invert: 5.78' Slack: 0.86" Sump: 0" Step Position:

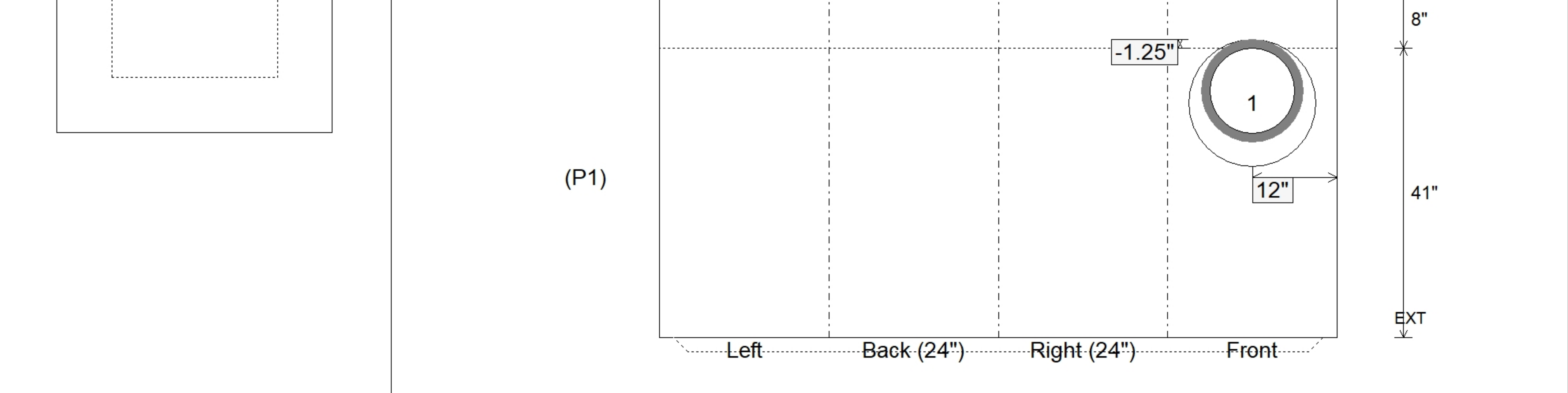
Position	Elev	Angle	Ext. (cw)	Pipe	Pipe OD	Connector	Hole	Horz Size	Up ()	Offset
Invert 1	894.83'	0°	20"	12" HDPE	14.5"	Hole 18	18"	18"	-1.25"	0"
Invert 2										
Invert 3										
Invert 4										
Invert 5										
Invert 6										
Invert 7										
Invert 8										

RIGHT-SIDE UP VIEW (int. dimensions)

UPSIDE-DOWN VIEW (int. dimensions)



INSIDE WALL DIMENSIONS



Coating (Int): Coating (Ext):	Seam Up: Tongue Seam Dn: n/a	Wall Thickness: 8" Floor Height: 8"	Height (Int): 41" Height (Ext): 49"	Weight (Net): 4426 lb Volume (Net): 1.13cu.yd
----------------------------------	---------------------------------	--	--	--