

Job Name: 26-1222 Woodvale Subdivision Ph.120-211-300
 Job Location: Erlanger, KY
 Contractor: Mago Construction Co. LLC

Plant: 100
 2/27/2026 12:42:41 PM

Tech: Jared - A
 PC: Celina Goff



Structure ID: CB-25-62 CB3A

P2 MH048LD12-28SQ

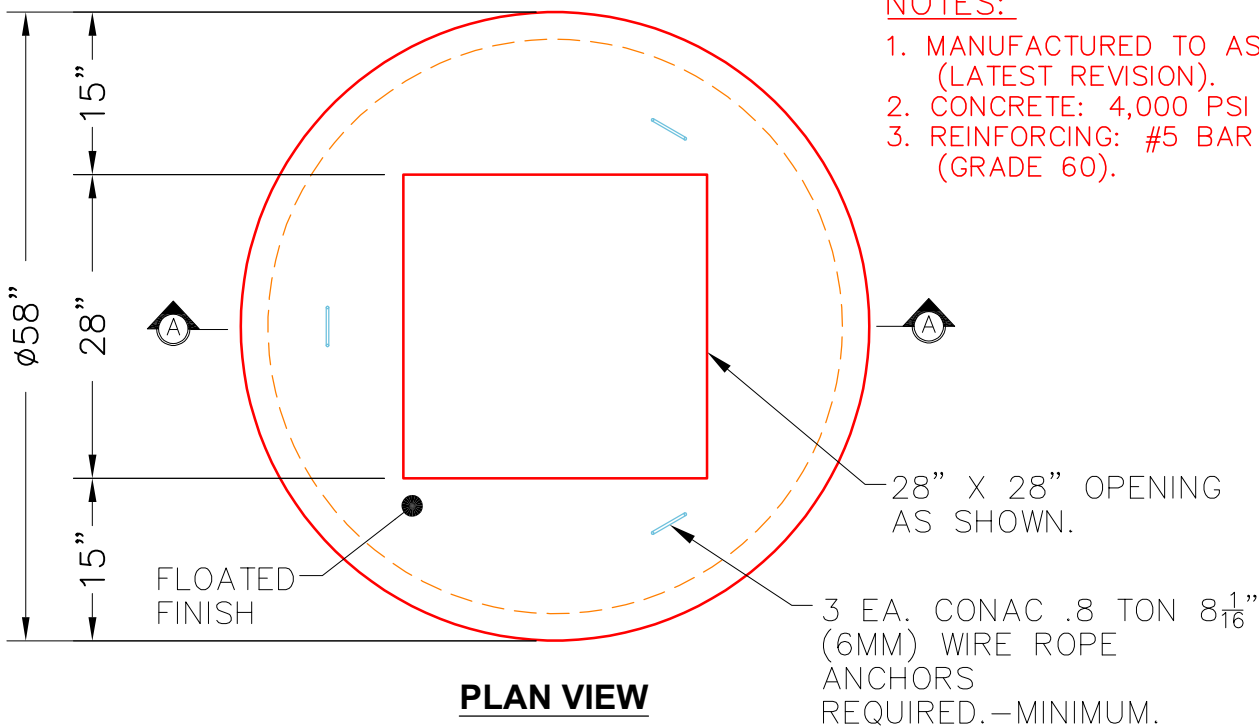
MH FLAT TOP w/28"x28" Hole F/G

- P3) 28" x 28" - CASTING HEIGHT - 5.50"
- P2) 48" - MH FLAT TOP w/28"x28" Hole F/G - 12"
- P1) 48" - MH BASE Custom Ht T/n - 36"
- 1) CASTING - EJ 7350 SET (F/G/H)
- 1) 48" - Conseal CS-102 1.00"
- 1) 28" x 28" - Conseal CS-102 1.00"
- 1) Hole - 20
- 1) Hole - 16
- 2) Hole - 6

0 lb
 1368 lb
 3598 lb
 442 lb
 0 lb
 0 lb
 0 lb
 0 lb
 0 lb
 0 lb
 0 lb
 Structure Total: 5408 lb

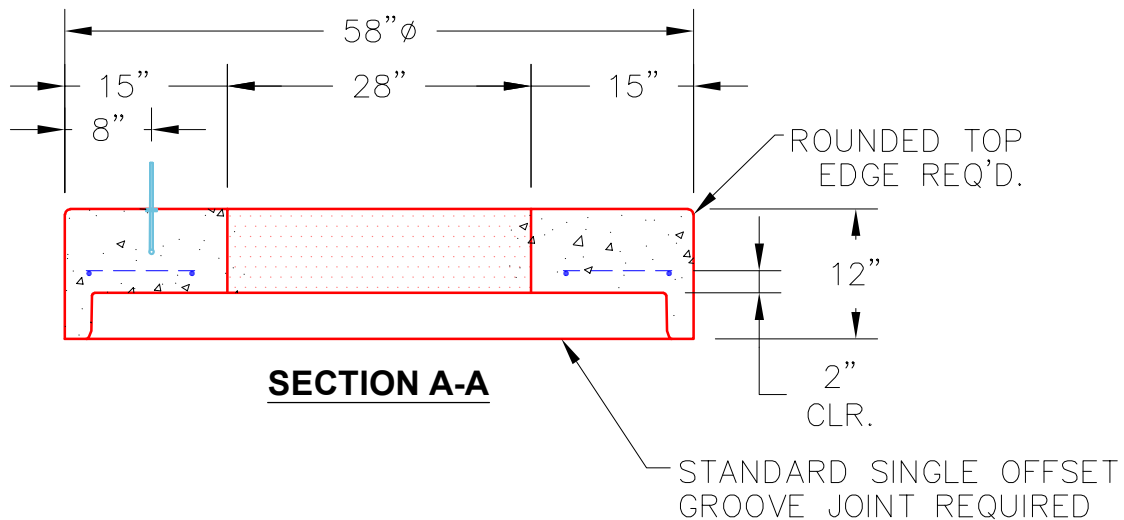
Structure Notes:
 PLAN LABEL: 25
 1. PER ASTM C478 SPECIFICATIONS.
 2. CONCRETE = 4,000 PSI AT 28 DAYS.
 3. EJ 7350 F/G/H BY ICAST.

REINFORCING PER ASTM A615 (GRADE 60).
 - TOP SLAB (As .62) #5 BARS AT 6" C.C.E.W.
 - RISER/WALLS (As .12)
 - FLOOR (As .31) #5 BARS AT 12" C.C.E.W.



NOTES:

1. MANUFACTURED TO ASTM C-478 (LATEST REVISION).
2. CONCRETE: 4,000 PSI AT 28 DAYS.
3. REINFORCING: #5 BAR @ 6" O.C. E.W. (GRADE 60).



Coating (Int): Coating (Ext):	Seam Up: Flat Seam Dn: Groove	Wall Thickness: 5"	Height (Ext): 12"	Weight (Net): 1368 lb Volume (Net): 0.35cu.yd
----------------------------------	----------------------------------	--------------------	-------------------	--