

Job Name: 26-1222 Woodvale Subdivision Ph.120-211-300  
 Job Location: Erlanger, KY  
 Contractor: Mago Construction Co. LLC

Plant: 100  
 2/26/2026 9:01:34 AM

Tech: Jared - A  
 PC: Celina Goff



**Structure ID: CB-23-60 CB2-2**

**P2 MH048MTVF**

**MH MONOTOP W/ HOE-280T CAST IN, Custom Ht F/G**

- P3) 24" x 24" - CASTING HEIGHT - 0"
- P2) 48" - MH MONOTOP W/ HOE-280T CAST IN, Custom Ht F/G - 30"
- P1) 48" - MH BASE Custom Ht T/n - 34"
- 1) CASTING - HOE 280T F/G
- 1) 48" - Conseal CS-102 1.00"
- 1) 24" x 24" - Conseal CS-102 1.00"
- 1) Hole - 30
- 1) Hole - 18
- 1) Hole - 20
- 4) Weir n/n - 30"x6"

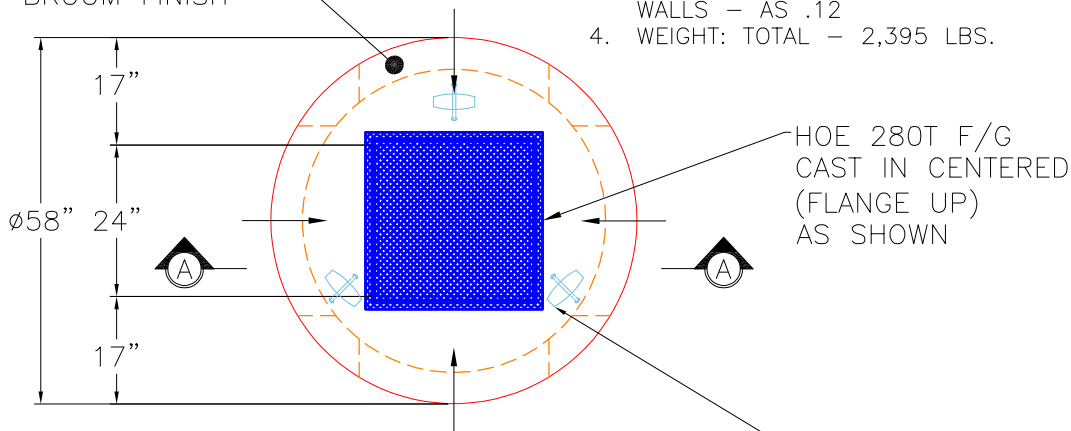
0 lb  
 2395 lb  
 3136 lb  
 182 lb  
 0 lb  
 0 lb  
 0 lb  
 0 lb  
 0 lb  
 0 lb  
 0 lb  
 -----  
 Structure Total: 5713 lb

- Structure Notes:**  
 PLAN LABEL: 23
1. HOE 280T F/G PROVIDED BY ICAST (CAST-IN).
  2. PER ASTM C478 SPECIFICATIONS.
  3. CONCRETE = 4,000 PSI AT 28 DAYS.
  4. REINFORCING PER ASTM A615 (GRADE 60).  
 - TOP SLAB (As .62) #5 BARS AT 6" C.C.E.W.  
 - RISER/WALLS (As .12)  
 - FLOOR (As .31) #5 BARS AT 12" C.C.E.W.

GENERAL NOTES:

1. MANUFACTURED TO ASTM C-478 (LATEST REVISION).
2. CONCRETE 4,000 PSI AT 28 DAYS.
3. REINFORCING:  
 TOP - #5 BAR @ 6" C.C. E.W.  
 WALLS - AS .12
4. WEIGHT: TOTAL - 2,395 LBS.

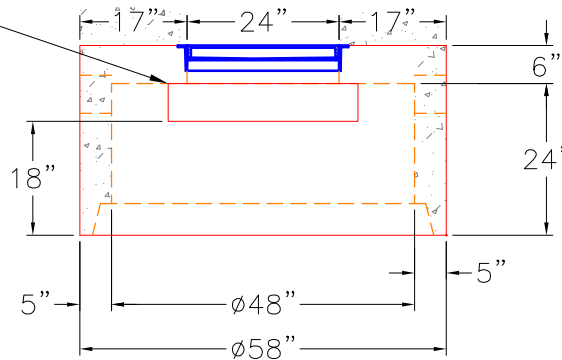
TOP SURFACE TO HAVE  
 LIGHT BROOM FINISH



**TOP VIEW**

3 EA. CONAC 5CA14  
 ANCHORS REQUIRED  
 FOR HANDLING.

4 EA. 30"W X 6"T  
 WEIR SLOTS @  
 ZERO, 90,  
 180, & 270



**SECTION A-A**

Coating (Int):  
 Coating (Ext):

Seam Up: Flat  
 Seam Dn: Groove

Wall Thickness: 5"

Height (Ext): 30"

Weight (Net): 2395 lb  
 Volume (Net): 0.61cu.yd