

**Job Name: 26-1210 Sacramento Gravity Sewer**  
**Job Location: Sacramento, KY**  
**Contractor: Scott & Ritter, Inc.**

PC: T. Lewis  
 TECH: S. Felletter  
 Plant: Beaver Dam



Structure ID: C1.1 MH1-19 SS-MH

Spec: Sanitary Rim: 497.89'  
 Type: SAN.MH Invert: 491.51'  
 Size: 48" Rim to Invert: 6.38'

Sump: 2"  
 Floor (Top): 491.343'  
 Floor Height: 6"

Floor (Bot): 490.843'  
 Overall Height: 6.917'  
 Slack: 1.56"

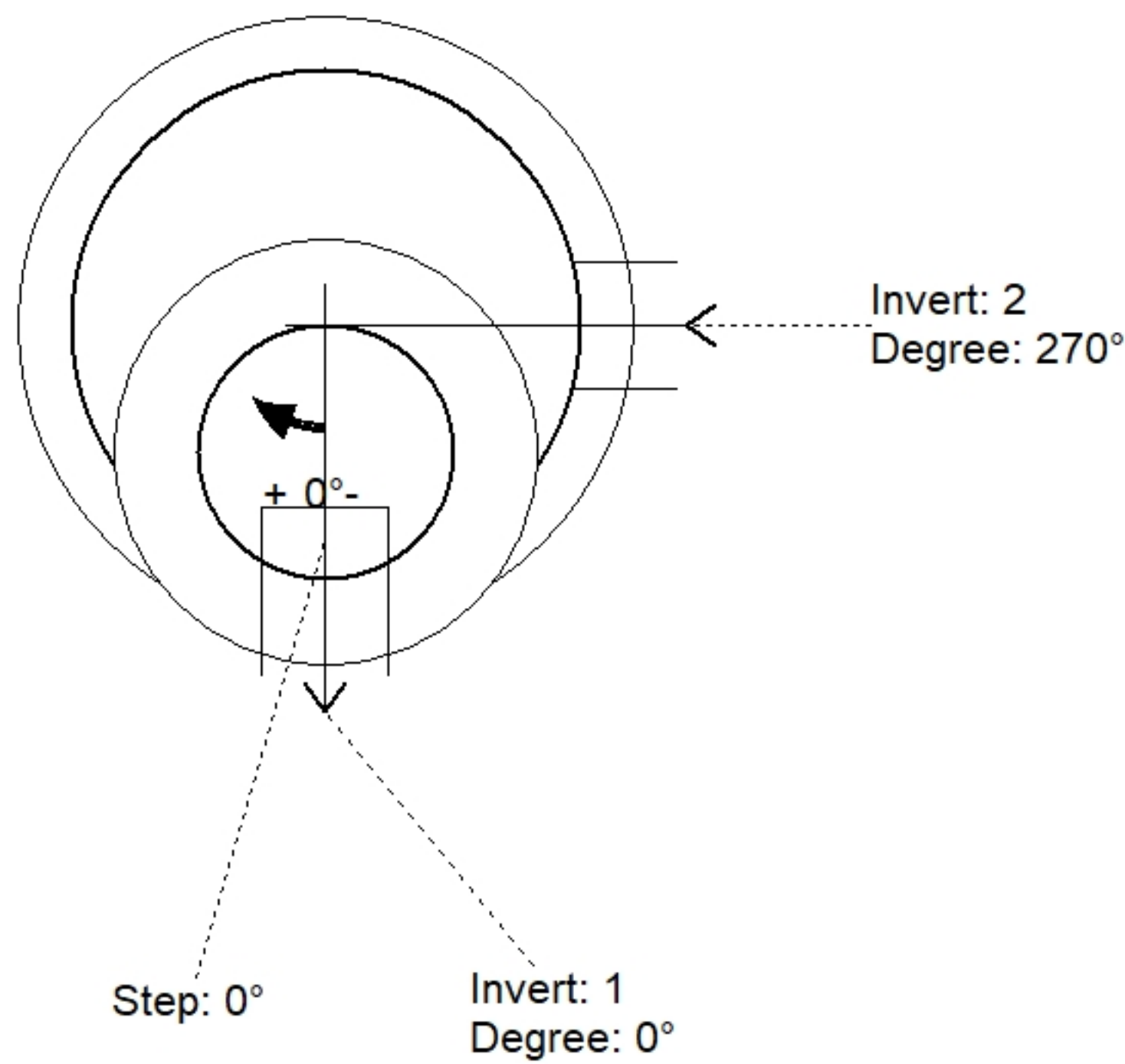
**Structure Notes:**

1. PER ASTM C478 SPECIFICATIONS.
2. CONCRETE = 4,000 PSI AT 28 DAYS.
3. CASTING BY OTHERS.

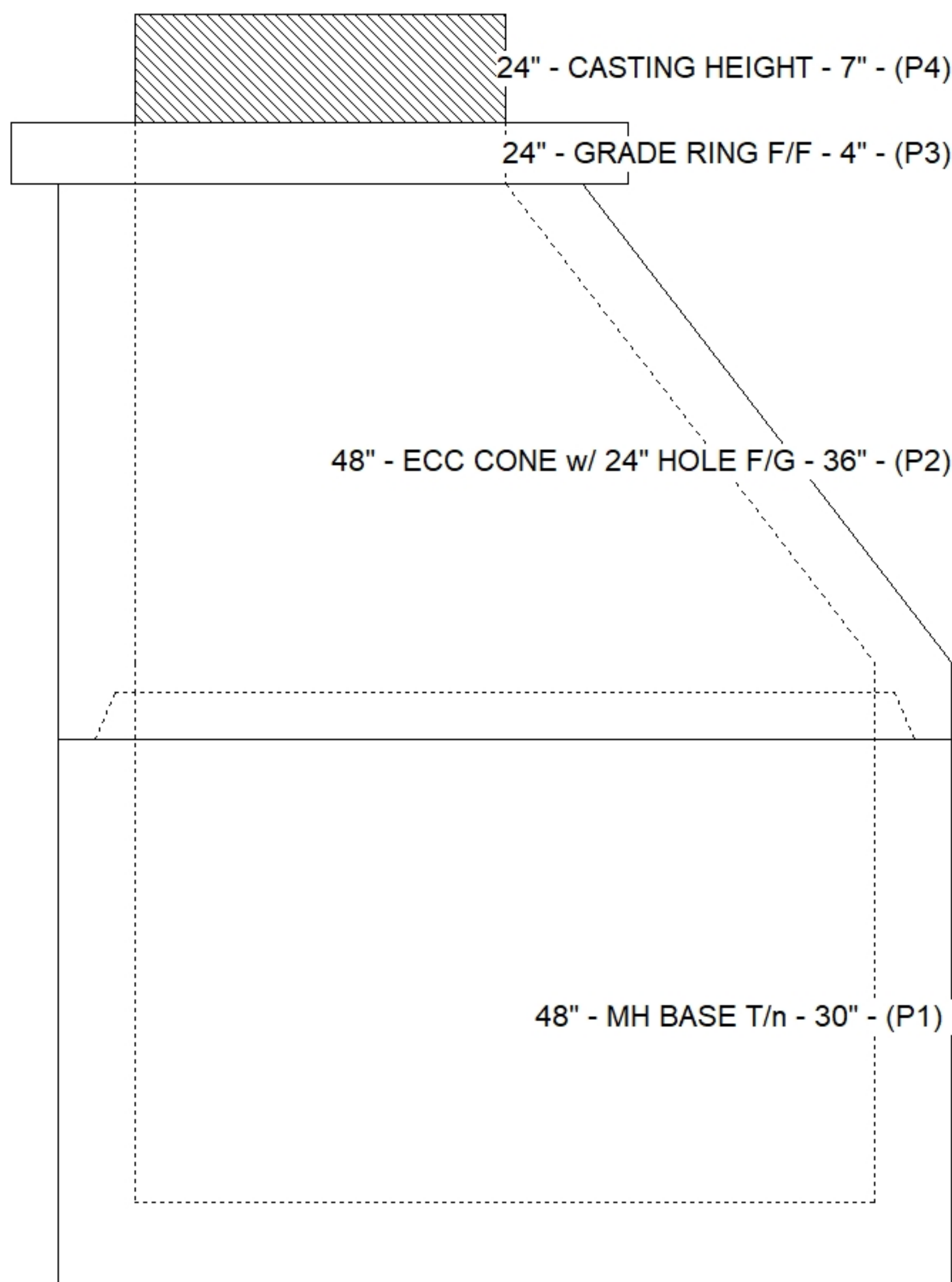
REINFORCING PER ASTM A615 (GRADE 60).  
 - CONE (As .12)  
 - RISER/WALLS (As .12)  
 - FLOOR (As .31) #5 BARS AT 12" C.C.E.W.

**STRUCTURE SUMMARY:**

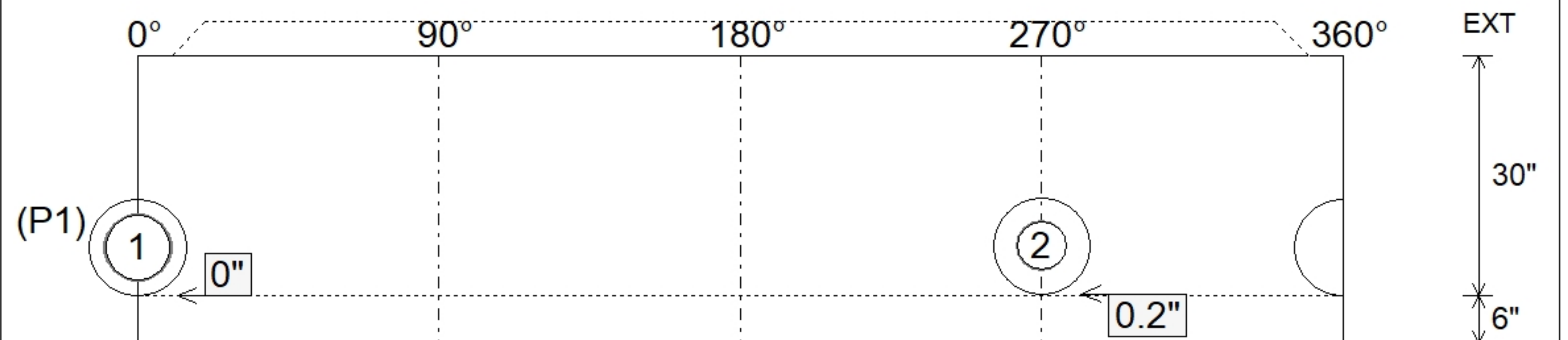
|   |                |
|---|----------------|
| P4) 24" - CASTING HEIGHT - 7"                 | 0 lb           |
| P3) 24" - GRADE RING F/F - 4"                 | 270 lb         |
| P2) 48" - ECC CONE w/ 24" HOLE F/G - 36"      | 3000 lb        |
| P1) 48" - MH BASE T/n - 30"                   | 3330 lb        |
| 1) JOINT WRAP - 0.065"x6"x50' CONSEAL CS212   | 0 lb           |
| 1) JOINT WRAP PRIMER - CONSEAL CS-75 (1 gal.) | 0 lb           |
| 1) 48" - MH INVERT CHANNEL - FULL HEIGHT      | 1440 lb        |
| 1) 48" - Conseal CS-102 1.00" (Double)        | 0 lb           |
| 1) PSX - 12-08 DD (DBL Bands)                 | 8 lb           |
| 1) PSX - 12-06 DD (DBL Bands)                 | 8 lb           |
| 5) MH Step ML-10-TDS-NCR - 10"                | 0 lb           |
| <b>Structure Total:</b>                       | <b>8056 lb</b> |



| Position | Elev    | Angle | Pipe         | Pipe OD | Hole | Connector                | Up (") | Ref |
|----------|---------|-------|--------------|---------|------|--------------------------|--------|-----|
| Rim      | 497.89' |       |              |         |      |                          |        |     |
| Reducer  |         |       |              |         |      |                          |        |     |
| Invert 1 | 491.51' | 0°    | 8" PVC SDR35 | 8.5"    | 12"  | PSX 12-08 DD (DBL Bands) | 0"     | P1  |
| Invert 2 | 491.61' | 270°  | 6" PVC SDR35 | 6.25"   | 12"  | PSX 12-06 DD (DBL Bands) | 0.2"   | P1  |
| Invert 3 |         |       |              |         |      |                          |        |     |
| Invert 4 |         |       |              |         |      |                          |        |     |
| Invert 5 |         |       |              |         |      |                          |        |     |
| Invert 6 |         |       |              |         |      |                          |        |     |
| Invert 7 |         |       |              |         |      |                          |        |     |
| Invert 8 |         |       |              |         |      |                          |        |     |



**Default - Interior Dimensions**



Submittal Drawing  
 4/24/2026 8:08:23 AM

SUBMITTAL  
 APPROVED BY: