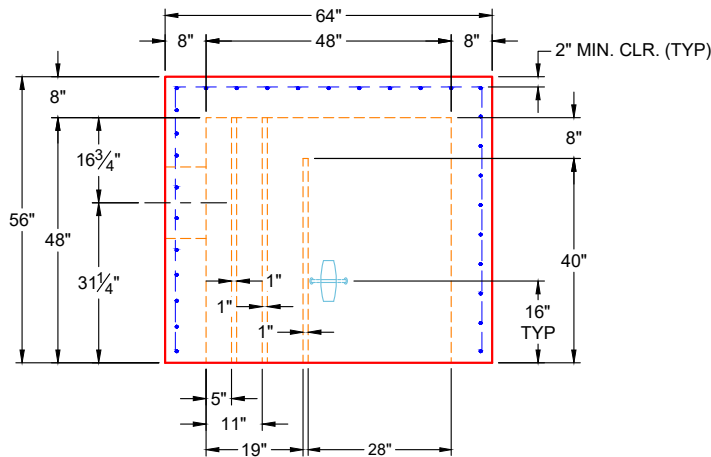


1" DEEP X 1" WIDE X 48" LONG SLOT CAST INTO WALLS ON BOTH SIDES (FOR 3/4" HDPE BAFFLE)

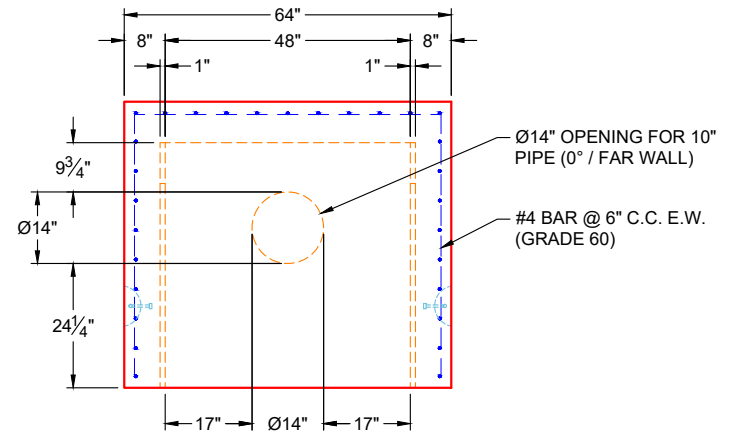
1" DEEP X 1" WIDE X 48" LONG SLOT CAST INTO WALLS ON BOTH SIDES (FOR 3/4" HDPE BAFFLE)

1" DEEP X 1" WIDE X 40" LONG SLOT CAST INTO WALLS ON BOTH SIDES (FOR 3/4" HDPE WEIR)

**PLAN VIEW
(UPSIDE DOWN)**



**VIEW A
(UPSIDE DOWN)**



**VIEW B
(UPSIDE DOWN)**

GENERAL NOTES:

1. MANUFACTURED PER ASTM C-913 LATEST REVISION)
2. CONCRETE: 4,500 PSI AT 28 DAYS
3. REINFORCEMENT: #4 BAR @ 6" C.C. E.W. (GRADE 60) - 2" MIN. REBAR CLEARANCE (TYP)
4. JOINT SEALED WITH CONCRETE SEALANTS CS-102 - MEETS ASTM C-990 SPECIFICATIONS (SUPPLIED BY ICAST)
5. WEIGHT: 9,855 LBS
6. 1 EA. 3/4" HDPE WEIR & 2 EA. 3/4" HDPE BAFFLES SUPPLIED BY OTHERS
7. SPECIAL PRE-ASSEMBLY OF INTERNALS BY ICAST

PRODUCTION WORK ORDER

PRODUCT I.D.: BX4848-08BA48

DESCRIPTION: 48" X 48" X 48" BASE, 8" WALLS & 8" FLOOR



QUALITY CONTROL CHECKLIST

- ALL DIMENSIONS CORRECT.
- LIFTERS INSTALLED.
- HOLE LOCATION(S) CORRECT.
- REINFORCING & SPACING CORRECT.
- SURFACE QUALITY ACCEPTABLE.
- EDGES CHAMFERED.
- ALL PATCHWORK ACCEPTABLE.

PRODUCT VIEW: UPSIDE DOWN

CUSTOMER: CONVERGENT WATER TECHNOLOGIES

PLANT: BEAVER DAM, KY

PROJECT: HOPE HOUSE PRETX

WEIGHT: 9,855 LBS

STRUCTURE: PRETX CB-1-1 ST-CB

TOP SECTION JOINT: N / A

ORDER NO: 26-1190

BASE SECTION JOINT: FLAT

PE: J.H. ROSS

DRAWING: K. CARDWELL

QC CHECK INITIALS:

DATE: 01/30/26

SCALE: NTS

PG. 1 OF 1

Job Number:

26-1190

Job Name:

Hope House PreTx

Structure:

PreTx CB-1-1 ST-CB

Note:

Special Pre-Assembly of Internals To
Be Performed By iCast