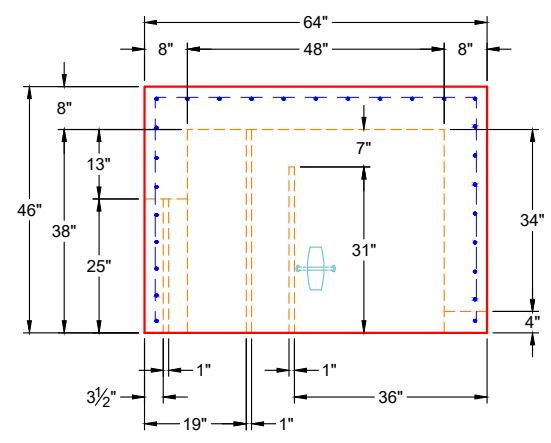


1" DEEP X 1" WIDE X 25" LONG SLOT CAST INTO WALLS ON BOTH SIDES (FOR STAINLESS STEEL HOODED SCREEN)

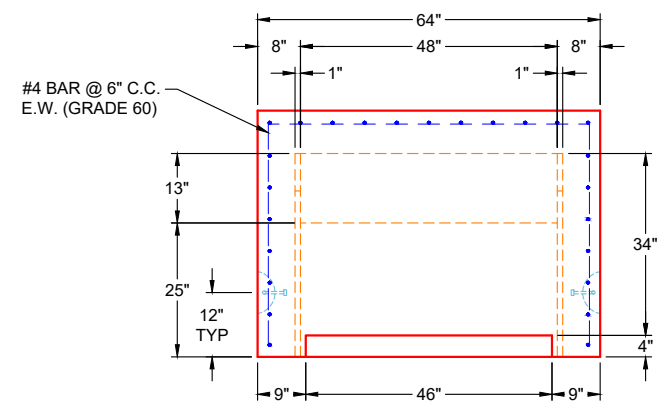
1" DEEP X 1" WIDE X 31" LONG SLOT CAST INTO WALLS ON BOTH SIDES (FOR 3/4" HDPE WEIR)

1" DEEP X 1" WIDE X 38" LONG SLOT CAST INTO WALLS ON BOTH SIDES (FOR 3/4" HDPE BAFFLE)

**PLAN VIEW
(UPSIDE DOWN)**



**VIEW A
(UPSIDE DOWN)**



**VIEW B
(UPSIDE DOWN)**

GENERAL NOTES:

1. MANUFACTURED PER ASTM C-913 LATEST REVISION)
2. CONCRETE: 4,500 PSI AT 28 DAYS
3. REINFORCEMENT: #4 BAR @ 6" C.C. E.W. (GRADE 60) - 2" MIN. REBAR CLEARANCE (TYP)
4. JOINT SEALED WITH CONCRETE SEALANTS CS-102 - MEETS ASTM C-990 SPECIFICATIONS (SUPPLIED BY ICAST)
5. WEIGHT: 7,520 LBS
6. 3/4" HDPE WEIR, 3/4" HDPE BAFFLE, & STAINLESS STEEL HOODED SCREEN SUPPLIED BY OTHERS
7. SPECIAL PRE-ASSEMBLY OF INTERNALS BY ICAST

PRODUCTION WORK ORDER

PRODUCT I.D.: BX4848-08BAVF

DESCRIPTION: 48" X 48" X 38" BASE, 8" WALLS & 8" FLOOR



- QUALITY CONTROL CHECKLIST**
- ALL DIMENSIONS CORRECT.
 - LIFTERS INSTALLED.
 - HOLE LOCATION(S) CORRECT.
 - REINFORCING & SPACING CORRECT.
 - SURFACE QUALITY ACCEPTABLE.
 - EDGES CHAMFERED.
 - ALL PATCHWORK ACCEPTABLE.

PRODUCT VIEW: UPSIDE DOWN

PLANT: BEAVER DAM, KY

WEIGHT: 7,520 LBS

TOP SECTION JOINT: N / A

BASE SECTION JOINT: FLAT

QC CHECK INITIALS:

CUSTOMER: CONVERGENT WATER TECHNOLOGIES

PROJECT: WAWA 7009 PRETX

STRUCTURE: PRETX-CURB 1C-3 ST-CI

ORDER NO: 26-1189

PE: J.H. ROSS DRAWING: K. CARDWELL

DATE: 01/30/26 SCALE: NTS PG. 1 OF 1

Job Number:

26-1189

Job Name:

Wawa 7009 PreTx

Structure:

PreTx-Curb 1C-3 ST-CI

Note:

Special Pre-Assembly of Internals To
Be Performed By iCast