

Job Name: 26-1188 Vine Grove Asphalt Plant
 Job Location: Vine Grove, KY
 Contractor: Scotty's Contracting & Stone, LLC

Plant: Beaver Dam
 2/4/2026 2:52:44 PM

Tech: S. Felletter
 PC: C. Goff



Structure ID: 3 ST-JB

P2 BXLD2424FL-24

BX FLAT LID 8inW w/CC 24" HOLE F/F

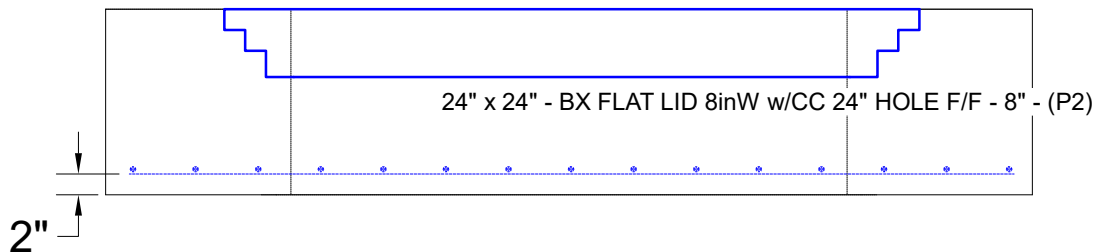
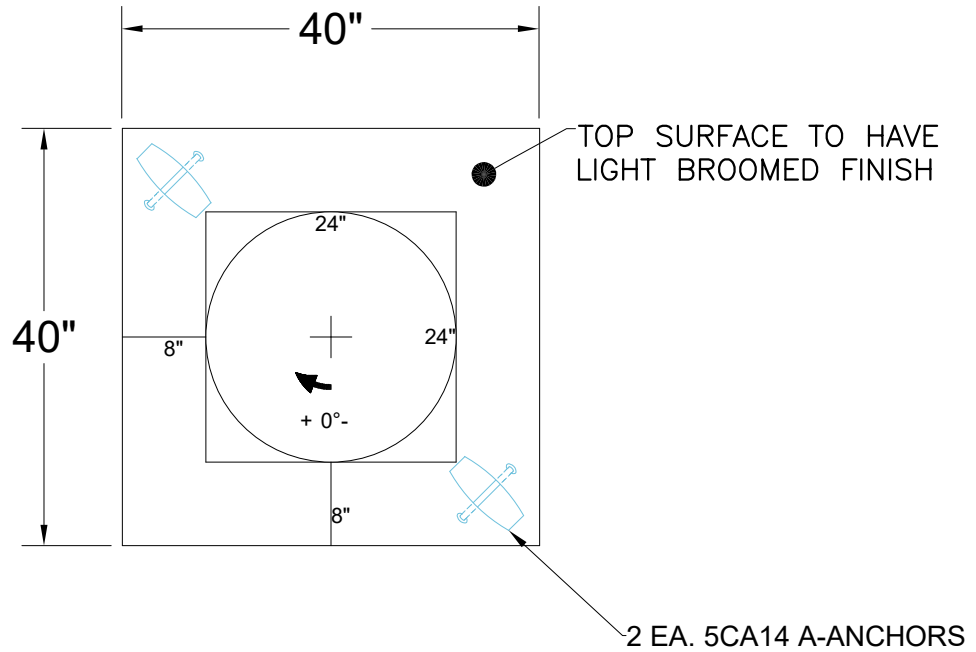
- P3) 24" - CASTING HEIGHT - 0"
- P2) 24" x 24" - BX FLAT LID 8inW w/CC 24" HOLE F/F - 8"
- P1) 24" x 24" - BOX BASE 8inW, 8inF, Variable Ht F/n - 55"
- 1) This Structure Includes a Cast-in Item
- 1) CASTING - HOE MCS-295 F/C
- 1) 24" x 24" - SGL 1"x14.5' Butyl
- 2) Hole - 16
- 1) Hole - 6

0 lb
 770 lb
 5578 lb
 0 lb
 123 lb
 0 lb
 0 lb
 0 lb

 Structure Total: 6471 lb

Structure Notes:
 1. PER ASTM C913 SPECIFICATIONS.
 2. CONCRETE = 4,000 PSI AT 28 DAYS.
 3. NO INVERT CHANNEL.
 4. CASTING HOE MCS-295 STORM BY ICAST, CAST-IN.

 REINFORCING PER ASTM A615 (GRADE 60).
 - TOP SLAB (As .62) #5 BARS AT 3" C.C.E.W.
 - WALLS (As .12) #5 BARS AT 12" C.C.E.W.
 - FLOOR (As .12) #5 BARS AT 12" C.C.E.W.



Coating (Int): Coating (Ext):	Seam Up: Flat Seam Dn: Flat	Wall Thickness: 8"	Height (Ext): 8"	Weight (Net): 770 lb Volume (Net): 0.2cu.yd
----------------------------------	--------------------------------	--------------------	------------------	--