

Job Name: 26-1188 Vine Grove Asphalt Plant
 Job Location: Vine Grove, KY
 Contractor: Scotty's Contracting & Stone, LLC

Plant: Beaver Dam
 2/4/2026 2:52:44 PM

Tech: S. Felletter
 PC: C. Goff



Structure ID: 2 ST-CB

P2 BX024024-08LD08S

CB FLAT TOP 8"W w/24" HOLE F/F

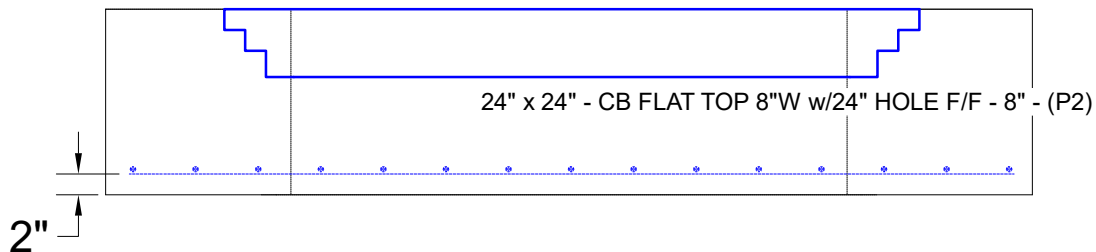
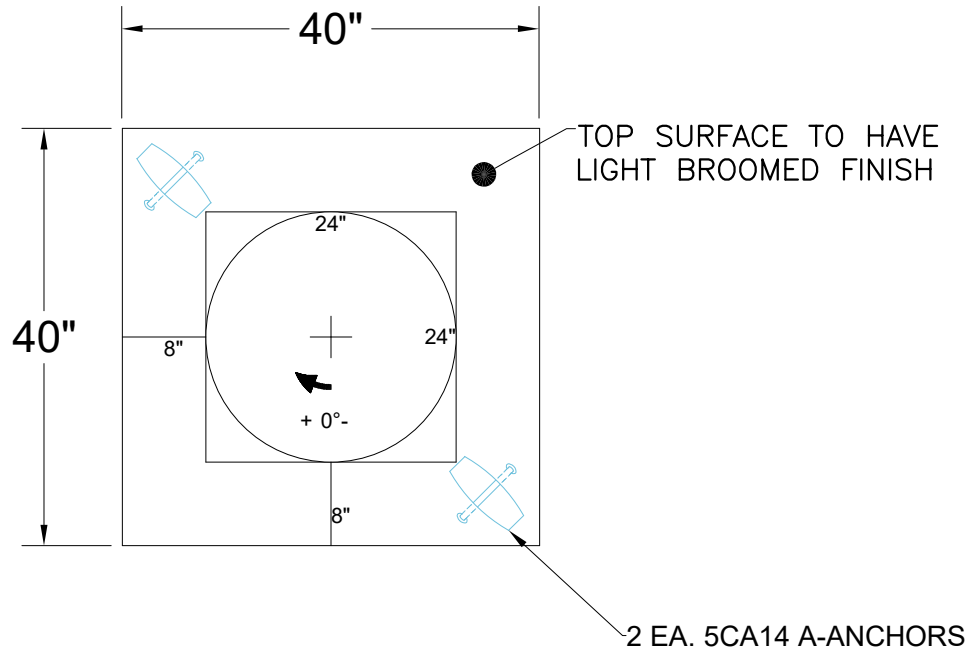
- P3) 24" - CASTING HEIGHT - 0"
- P2) 24" x 24" - CB FLAT TOP 8"W w/24" HOLE F/F - 8"
- P1) 24" x 24" - BOX BASE 8inW, 8inF, Variable Ht F/n - 28"
- 1) This Structure Includes a Cast-in Item
- 1) 24" x 24" - Conseal CS-102 1.00"
- 1) Hole - 16

0 lb
 770 lb
 3345 lb
 0 lb
 0 lb
 0 lb
 0 lb

Structure Total: 4115 lb

- Structure Notes:
1. PER ASTM C913 SPECIFICATIONS.
 2. CONCRETE = 4,000 PSI AT 28 DAYS.
 3. NO INVERT CHANNEL.
 4. CASTING HOE MCS-295-B BY ICAST, CAST-IN.

REINFORCING PER ASTM A615 (GRADE 60).
 - TOP SLAB (As .62) #5 BARS AT 3" C.C.E.W.
 - WALLS (As .12) #5 BARS AT 12" C.C.E.W.
 - FLOOR (As .12) #5 BARS AT 12" C.C.E.W.



Coating (Int):
 Coating (Ext):

Seam Up: Flat
 Seam Dn: Flat

Wall Thickness: 8"

Height (Ext): 8"

Weight (Net): 770 lb
 Volume (Net): 0.2cu.yd