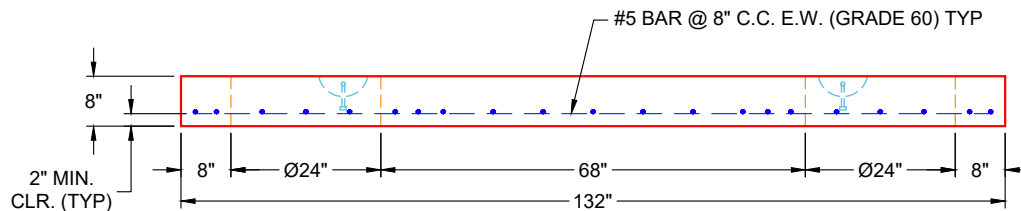
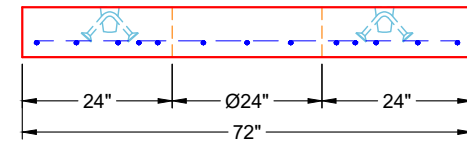


**PLAN VIEW  
(RIGHT SIDE UP)**



**FRONT VIEW  
(RIGHT SIDE UP)**



**SIDE VIEW  
(RIGHT SIDE UP)**

**GENERAL NOTES:**

1. MANUFACTURED PER ASTM C-890-13 (LATEST REVISION)
2. CONCRETE: 5,000 PSI AT 28 DAYS
3. REINFORCEMENT: #5 BAR @ 8" C.C. E.W. (GRADE 60) - 2" MIN. REBAR CLEARANCE (TYP)
4. WEIGHT: 5,775 LBS
5. 2 EA. HOE MC-375 FRAMES & COVERS LETTERED "GREASE TRAP" SUPPLIED BY ICAST
6. LIFTERS: 4 EA. 5CA14 CONAC A-ANCHORS FOR PLANT & FIELD HANDLING
7. TOP SURFACE TO RECEIVE FLOATED FINISH

**PRODUCTION WORK ORDER**

PRODUCT I.D.: BX60120-06LD08

DESCRIPTION: 72" X 132" X 8" 1,000 GAL GREASE TRAP FLAT LID



**QUALITY CONTROL CHECKLIST**

- ALL DIMENSIONS CORRECT.
- LIFTERS INSTALLED.
- HOLE LOCATION(S) CORRECT.
- REINFORCING & SPACING CORRECT.
- DIAGONAL STEEL TIED IN.
- FLAT ON BOTTOM OF SLAB.
- UNIFORM FLOATED SURFACE.

PRODUCT VIEW: RIGHT SIDE UP

CUSTOMER: ERNIE DAVIS & SONS MECHANICAL, INC.

PLANT: BEAVER DAM, KY

PROJECT: KYROCK ELEMENTARY GREASE TRAP

WEIGHT: 5,775 LBS

STRUCTURE: 61168 (2)

TOP SECTION JOINT: FLAT

ORDER NO: 26-1168

BASE SECTION JOINT: N / A

PE: J.H. ROSS

DRAWING: K. CARDWELL

QC CHECK INITIALS:

DATE: 02/26/26

SCALE: NTS

PG. 1 OF 1