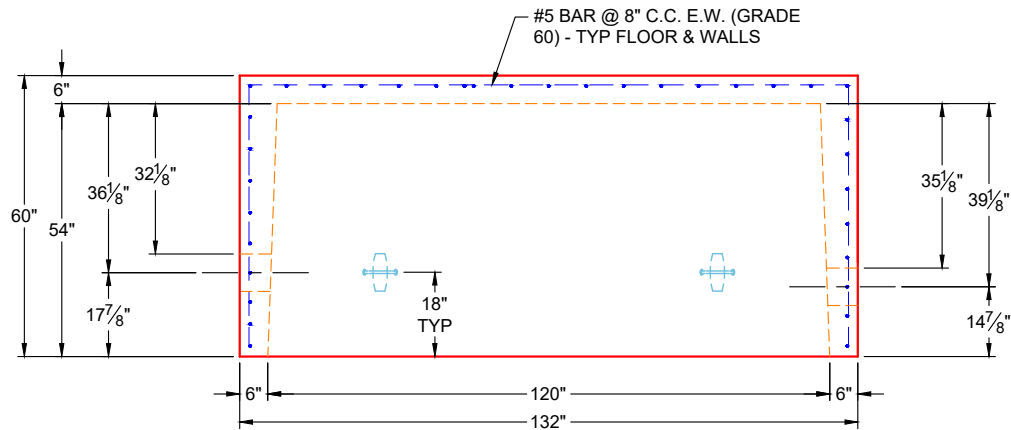
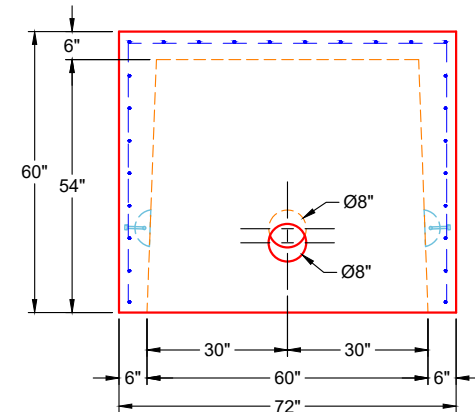


**PLAN VIEW
(UPSIDE DOWN)**



**VIEW A
(UPSIDE DOWN)**



**VIEW B
(UPSIDE DOWN)**

GENERAL NOTES:

1. MANUFACTURED PER ASTM C-890-13 (LATEST REVISION)
2. CONCRETE: 5,000 PSI AT 28 DAYS
3. REINFORCEMENT: #5 BAR @ 8" C.C. E.W. (GRADE 60) - 2" MIN. REBAR CLEARANCE (TYP)
4. TOTAL WEIGHT: 17,890 LBS
 - FIRST POUR (BASE): 16,915 LBS
 - SECOND POUR (BAFFLE WALL): 975 LBS
5. POUR BASE & THEN POUR INTERIOR BAFFLE WALL (SEE PAGE 2 OF 2 FOR DETAILS)
6. (2) PSX 8QRS-S NYLO BOOTS SUPPLIED BY ICAST

PRODUCTION WORK ORDER

PRODUCT I.D.: BX60120-06W06F-BA54

DESCRIPTION: 60" X 120" X 54" 1,000 GAL GREASE TRAP BASE



QUALITY CONTROL CHECKLIST

- ALL DIMENSIONS CORRECT.
- LIFTERS INSTALLED.
- HOLE LOCATION(S) CORRECT.
- REINFORCING & SPACING CORRECT.
- BAFFLE POURED CORRECTLY.
- BOOTS & BANDS INSTALLED.
- JOINT INSTALLED.

PRODUCT VIEW: UPSIDE DOWN

CUSTOMER: ERNIE DAVIS & SONS MECHANICAL, INC.

PLANT: BEAVER DAM, KY

PROJECT: KYROCK ELEMENTARY GREASE TRAP

WEIGHT: 16,915 LBS (17,890 LBS W/ BAFFLE WALL)

STRUCTURE: 61168 (2)

TOP SECTION JOINT: N / A

ORDER NO: 26-1168

BASE SECTION JOINT: FLAT

PE: J.H. ROSS

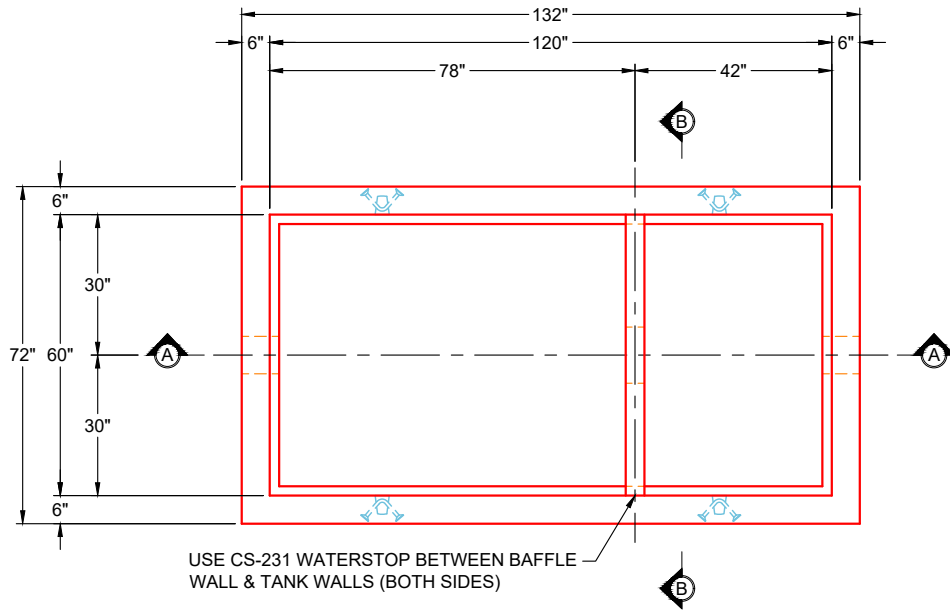
DRAWING: K. CARDWELL

QC CHECK INITIALS:

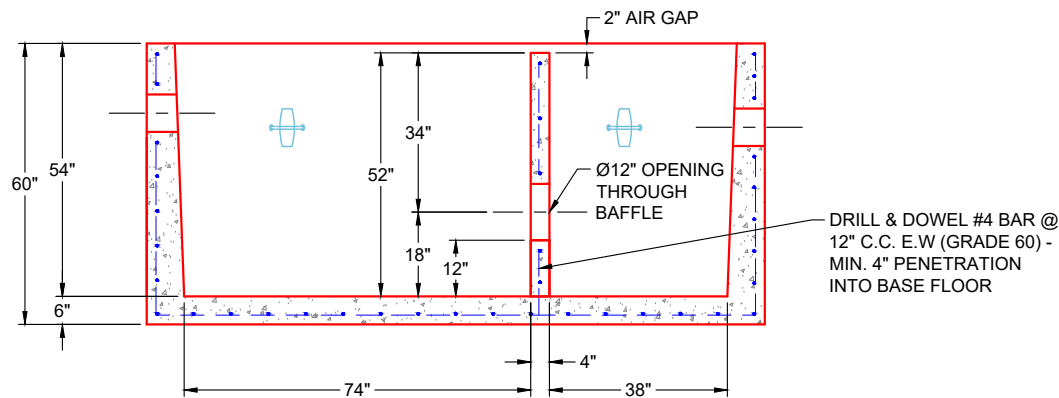
DATE: 02/26/26

SCALE: NTS

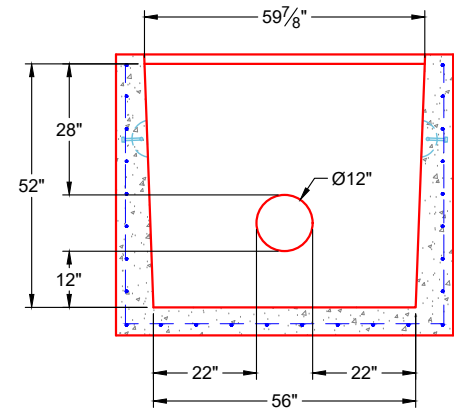
PG. 1 OF 2



**PLAN VIEW
(RIGHT SIDE UP)**



**SECTION A-A
(RIGHT SIDE UP)**



**SECTION B-B
(RIGHT SIDE UP)**

GENERAL NOTES:

1. MANUFACTURED PER ASTM C-890-13 (LATEST REVISION)
2. CONCRETE: 5,000 PSI AT 28 DAYS
3. REINFORCEMENT: DRILL & STUB #4 BAR @ 12" C.C. E.W. (GRADE 60) INTO BASE FLOOR (MIN. 4" PENETRATION) TO TIE IN WITH BASE - 2" MIN. REBAR CLEARANCE (TYP)
4. TOTAL WEIGHT: 17,890 LBS
 - FIRST POUR (BASE): 16,915 LBS
 - SECOND POUR (BAFFLE WALL): 975 LBS
5. THIS DRAWING IS TO BE USED FOR POURING THE BAFFLE WALL

PRODUCTION WORK ORDER

PRODUCT I.D.: BX60120-06W06F-BA54

DESCRIPTION: 1,000 GAL GREASE TRAP BAFFLE WALL



QUALITY CONTROL CHECKLIST

- ALL DIMENSIONS CORRECT.
- LIFTERS INSTALLED.
- HOLE LOCATION(S) CORRECT.
- REINFORCING & SPACING CORRECT.
- BAFFLE POURED CORRECTLY.
- BOOTS & BANDS INSTALLED.
- JOINT INSTALLED.

PRODUCT VIEW: RIGHT SIDE UP

CUSTOMER: ERNIE DAVIS & SONS MECHANICAL, INC.

PLANT: BEAVER DAM, KY

PROJECT: KYROCK ELEMENTARY GREASE TRAP

WEIGHT: 975 LBS (17,890 LBS BASE & BAFFLE TOTAL)

STRUCTURE: 61168 (2)

TOP SECTION JOINT: N / A

ORDER NO: 26-1168

BASE SECTION JOINT: N / A

PE: J.H. ROSS

DRAWING: K. CARDWELL

QC CHECK INITIALS:

DATE: 02/26/26

SCALE: NTS

PG. 2 OF 2