



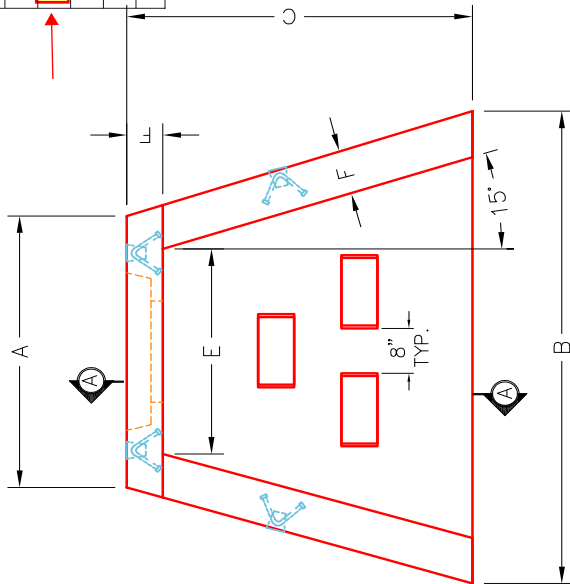
Structure ID: HW1 (2)

P1 HAWW15D

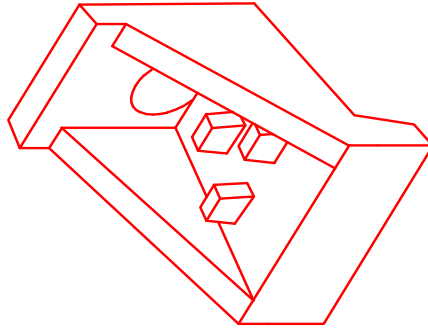
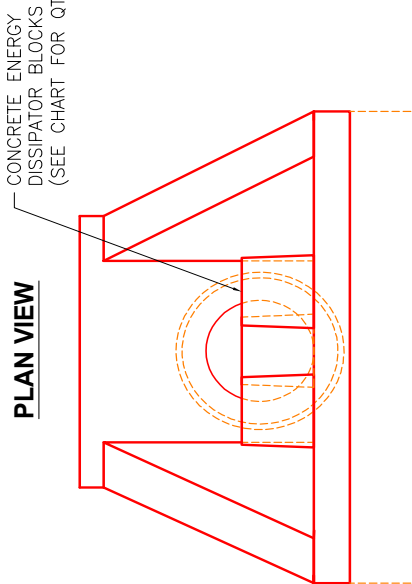
15" - HW AW w/TOE/DISSIPATORS F/F

DIMENSIONS & QUANTITIES

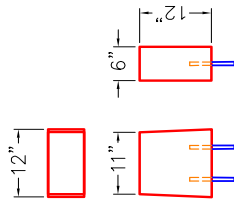
TYPE	PIPE Ø	A	B	C	D	E	F	G	QTY. BLOCKS	MAX OPENING	WEIGHT
AW	12"-18"	2'-8"	4'-0"	2'-6"	2'-2"	2'-0"	6"	0"	3 EA.	26"	1,360 LBS.
BW	24"	4'-0"	6'-0"	3'-8"	3'-0"	3'-0"	8"	6"	5 EA.	32"	3,100 LBS.
CW	30"-42"	6'-8"	9'-6"	4'-6"	4'-6"	5'-4"	8"	6"	7 EA.	56"	8,100 LBS.
DW	48"-60"	8'-2"	10'-0"	4'-8"	5'-0"	6'-11"	8"	6"-30"	9 EA.	78"	11,500 LBS.



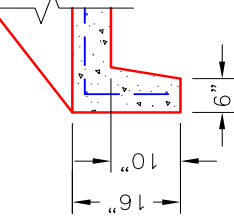
PLAN VIEW



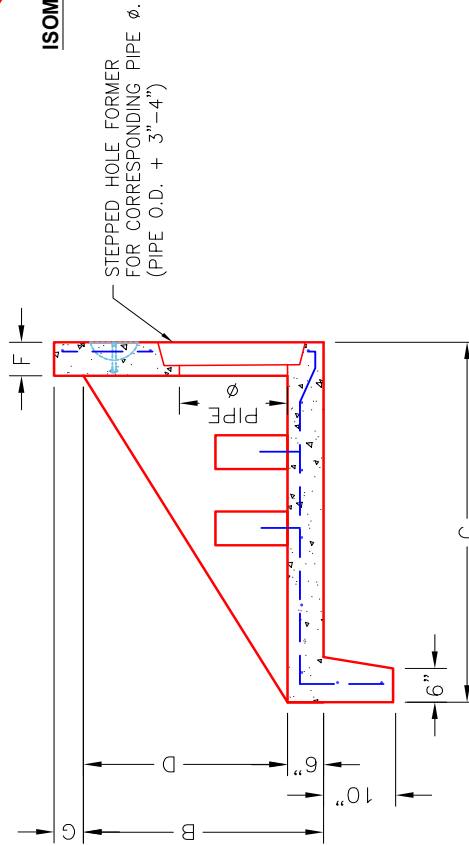
ISOMETRIC VIEW



DISSIPATOR BLOCK DETAIL



FOOTING (TOE) DETAIL



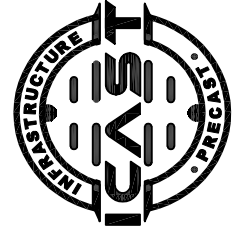
SECTION A-A

FRONT ELEVATION

NOTES:

1. CONCRETE: 4500 PSI AT 28 DAYS MINIMUM COMPRESSIVE STRENGTH.
2. REINFORCING: #4 BAR @ 12" C/C E.W. - GRADE 60, (WITH 2" CONCRETE COVER MINIMUM)
3. REINFORCING BARS TO BE TACK WELDED OR TIED.
4. PIPE AND LIFTING ANCHOR POCKETS TO BE GROUTED WITH NON-SHRINK GROUT AFTER SETTING.
5. PREFORMED STEPPED HOLE SIZED AS PER O.D. OF PIPE + 3"-4".
6. OPTIONAL FOOTING (TOE) AVAILABLE FOR ALL SIZES.
7. DISSIPATOR BLOCKS INSTALLED POST POUR OF HEADWALL WITH 2 EA. #5 REBAR DOWELS.

INFRASTRUCTURE PRECAST, INC.
 981 WEST 7TH ST., BEAVER DAM, KY. 42320
 PHONE: (270) 363-2238. FAX: (270) 298-7424



PRECAST WINGED HEADWALL
 WITH ENERGY DISSIPATORS

DRAWING NO.: NMETRO SF-HW DATE: 09-24-21

REVIEWED BY: J.H. ROSS, PE DRAWN BY: N. RICHARDS

WEB: WWW.ICASTINC.COM SCALE: NTS