

Job Name: 26-1141 - KYTC Warren Co (261106)  
 Job Location: Bowling Green, KY  
 Contractor: Mick-Murf Construction Inc.

Plant: 100  
 3/17/2026 4:03:06 PM

Tech: Jared - F  
 PC: C. Goff

**Structure ID: A09 (23)**

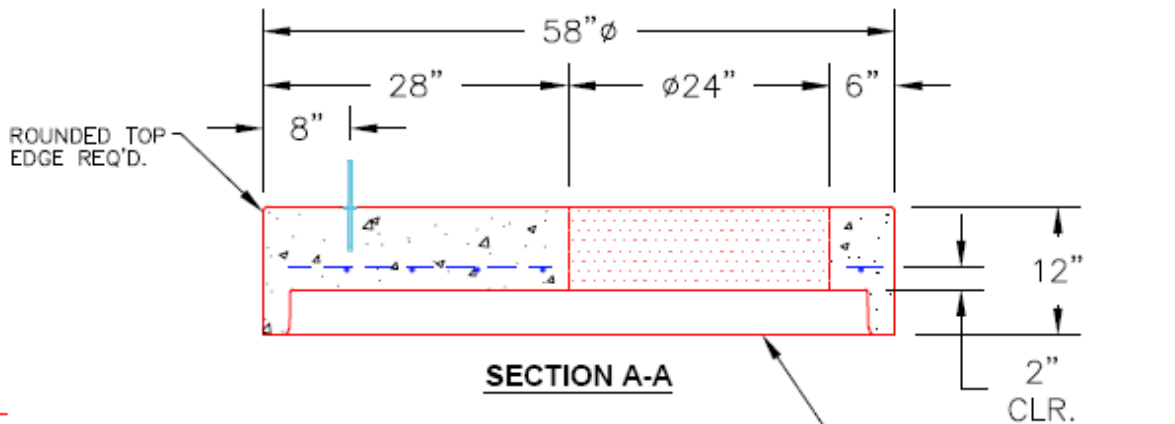
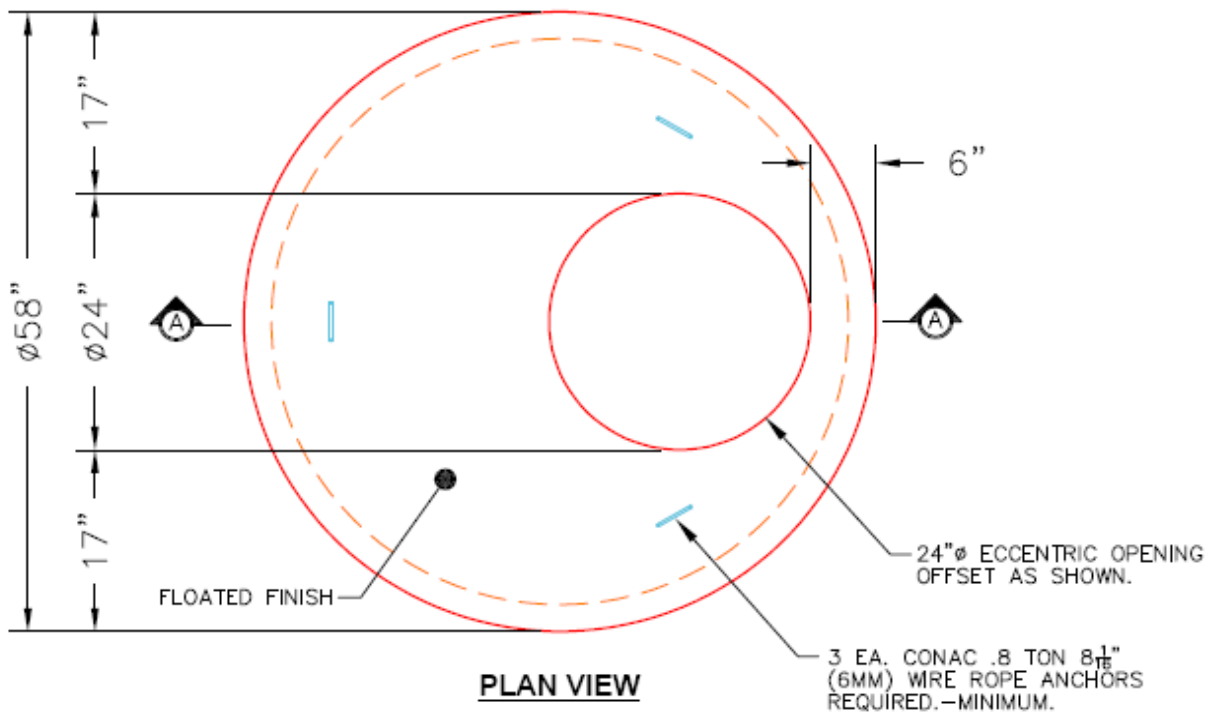
**P2 MH048LD12ECC**

**MH FLAT LID w/24in ECC Hole F/G**

- P3) 24" - CASTING HEIGHT - 8"
- P2) 48" - MH FLAT LID w/24in ECC Hole F/G - 12"
- P1) 48" - MH BASE Custom Ht T/n - 35"
- 1) 48" - Conseal CS-102 1.00"
- 1) Hole - 28
- 1) Hole - 22
- 2) Hole - 18
- 3) MH Step ML-10-TDS-NCR - 10"

0 lb  
 1561 lb  
 3120 lb  
 0 lb  
 0 lb  
 0 lb  
 0 lb  
 0 lb  
 -----  
 Structure Total: 4681 lb

Structure Notes:  
**\*\*KYTC STATE PROJECT\*\***  
 1. PER KYTC MH A / ASTM C478 SPEC'S.  
 2. CONCRETE = 4,000 PSI AT 28 DAYS.  
 3. CASTING SUPPLIED BY OTHERS (HOE KY-510 F/C).  
  
 REINFORCING PER ASTM A615 (GRADE 60.)  
 - TOP SLAB (As .62) #5 BARS AT 6" C.C.E.W..  
 - RISER/WALLS (As .12)  
 - FLOOR (As .31) #5 BARS AT 12" C.C.E.W.



**NOTES:**

- 1. MANUFACTURED TO ASTM C-478 (LATEST REVISION).
- 2. CONCRETE: 5,000 PSI AT 28 DAYS.
- 3. REINFORCING: #5 BAR @ 10" O.C. E.W. (GRADE 60).

Coating (Int):  
 Coating (Ext):

Seam Up: Flat  
 Seam Dn: Groove

Wall Thickness: 5"

Height (Ext): 12"

Weight (Net): 1561 lb  
 Volume (Net): 0.4cu.yd