

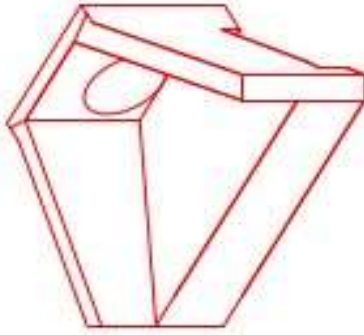


**Structure ID: HW-925.7'**

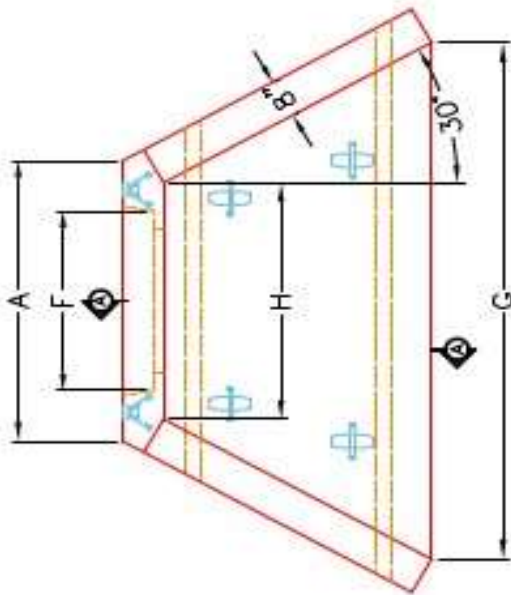
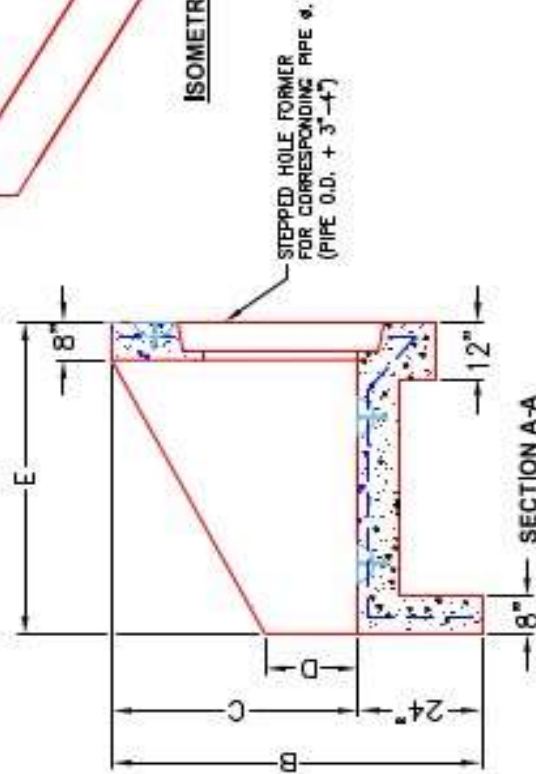
**P1 HWPC48**

**48" - PIPE CULVERT HEADWALL**

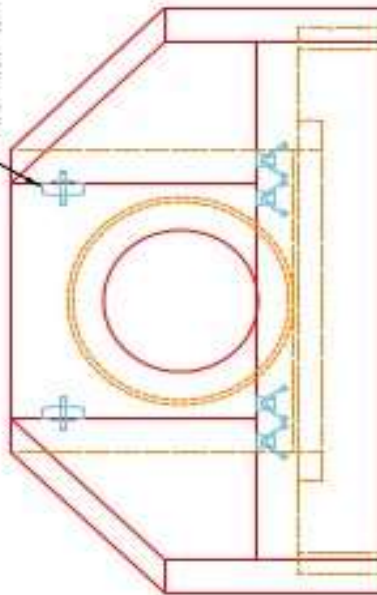
DIMENSIONS									
PRE #	A	B	C	D	E	F	G	H	WEIGHT
3'	1'-4"	6'-4"	1'-4"	1'-4"	5'-0"	3'-6"	1'-8"	3'-4"	6,820 lbs.
3'	1'-4"	6'-4"	1'-4"	1'-4"	5'-0"	4'-0"	1'-8"	3'-4"	6,820 lbs.
4'	6'-4"	6'-7"	5'-5"	2'-4"	6'-5"	4'-6"	1'-8"	4'-11"	13,233 lbs.
4'	6'-4"	6'-7"	5'-5"	2'-4"	6'-5"	5'-2"	1'-8"	4'-11"	13,233 lbs.
5'	7'-4"	7'-4"	6'-6"	2'-4"	7'-4"	5'-0"	1'-8"	6'-0"	18,427 lbs.
6'	7'-4"	7'-4"	6'-6"	2'-4"	7'-4"	5'-8"	1'-8"	6'-0"	18,427 lbs.



ISOMETRIC VIEW



"A"-ANCHOR LIFTING SYSTEM FOR PLANT & FIELD HANDLING.



APPROVED FOR DESIGN ONLY

APPROVED  
 AS PER SPECIFICATION 1012  
 KYTC DIV. OF CONSTRUCTION

DATE: 1/20/2021 9:50 am  
 INSTRUCTION

ICAST INFRASTRUCTURE PRECAST

INFRASTRUCTURE PRECAST, INC.  
 401 WEST 7TH ST., MANASSAS, VA 20108  
 PHONE: (703) 361-2266, FAX: (703) 361-2484

KYTC 30" - 80" PIPE CULVERT HEADWALL

DRAWING NO.: KYTC PC-118 DATE: 12-14-20  
 DESIGNED BY: J.H. DAVIS, PE DRAWN BY: K. RICHARDS  
 WEB: WWW.ICASTINC.COM SCALE: 1/8"

NOTES:

1. CONCRETE: KYTC APPROVED.
2. REINFORCING: #5 BAR @ 12" C/C E.W.-GRADE 60, (WITH 2" CONCRETE COVER MINIMUM)
3. REINFORCING BARS TO BE TACK WELDED OR TIED.
4. PIPE AND LIFTING ANCHOR POCKETS TO BE GROUTED WITH KYTC APPROVED NON-SHRINK GROUT.
5. DRAWING TO BE USED IN CONJUNCTION WITH KYTC STD. DRAWING RDH-110-02, RDH-210-03 AND THE STANDARD SPECIFICATIONS FOR ROAD AND BRIDGE CONSTRUCTION.
6. 3/4" CHAMFER ON ALL EXPOSED EDGES.
7. PREFORMED STEPPED HOLE SIZED AS PER O.D. OF PIPE + 3" - 4".