

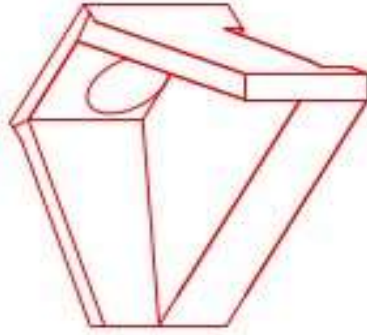


Structure ID: HW-919.00'

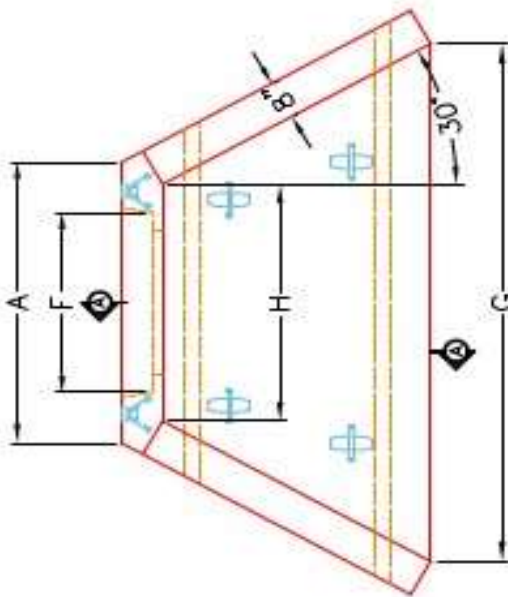
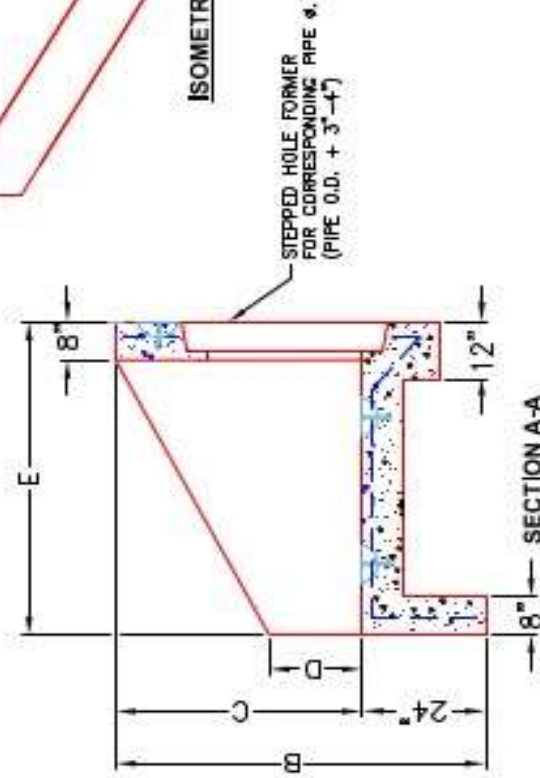
P1 HWPC30

30" - PIPE CULVERT HEADWALL

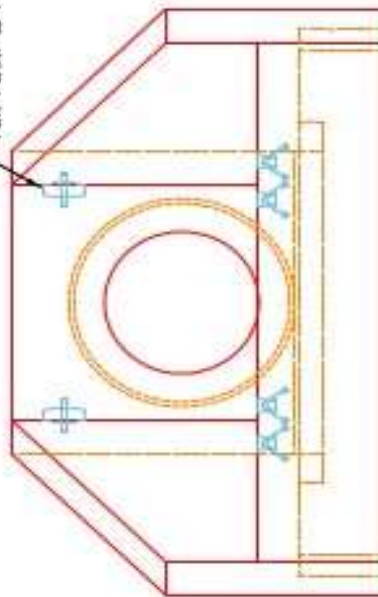
DIMENSIONS								WEIGHT	
PRE #	A	B	C	D	E	F	G	H	
3'	6'-4"	6'-4"	4'-0"	1'-4"	5'-0"	7'-6"	1'-8"	3'-4"	6,820 lbs.
3'	6'-4"	6'-4"	4'-0"	1'-4"	5'-0"	7'-6"	1'-8"	3'-4"	6,820 lbs.
4'	6'-4"	6'-7"	5'-5"	2'-4"	6'-5"	6'-6"	1'-8"	4'-11"	13,233 lbs.
4'	6'-4"	6'-7"	5'-5"	2'-4"	6'-5"	6'-5"	1'-8"	4'-11"	13,233 lbs.
5'	7'-4"	7'-4"	6'-6"	2'-4"	7'-4"	5'-8"	0'-8"	6'-0"	8,422 lbs.
6'	7'-4"	7'-4"	6'-6"	2'-4"	7'-4"	7'-4"	0'-8"	6'-0"	8,422 lbs.



ISOMETRIC VIEW



"A"-ANCHOR* LIFTING SYSTEM FOR PLANT & FIELD HANDLING.



NOTES:

1. CONCRETE: KYTC APPROVED.
2. REINFORCING: #5 BAR @ 12" C/C E.W.-GRADE 60, (WITH 2" CONCRETE COVER MINIMUM)
3. REINFORCING BARS TO BE TACK WELDED OR TIED.
4. PIPE AND LIFTING ANCHOR POCKETS TO BE GROUTED WITH KYTC APPROVED NON-SHRINK GROUT.
5. DRAWING TO BE USED IN CONJUNCTION WITH KYTC STD. DRAWING RDH-110-02, RDH-210-03 AND THE STANDARD SPECIFICATIONS FOR ROAD AND BRIDGE CONSTRUCTION.
6. 3" CHAMFER ON ALL EXPOSED EDGES.
7. PREFORMED STEPPED HOLE SIZED AS PER O.D. OF PIPE + 3" - 4".

APPROVED FOR DESIGN ONLY

APPROVED
 AS PER SPECIFICATION 1012
 KYTC DIV. OF CONSTRUCTION
 1/20/2021 9:50 AM
 INSTRUCTION



INFRASTRUCTURE PRECAST, INC.
 401 WEST 7TH ST., MANASSAS, VA 20108
 PHONE (703) 388-2288, FAX (703) 388-2484

KYTC 30" - 60" PPE CULVERT HEADWALL

DESIGNED BY: J.H. DAVIS, P.E. DATE: 12-14-20
 DRAWN BY: K. RICHARDS
 WWW.CASTINC.COM SCALE: 1/8"