

Job Name: 26-1101 - 775714 New Clarkston JH School  
 Job Location: Clarkston, MI  
 Contractor: Contech Engineering Solutions

Plant: Beaver Dam

1/16/2026 8:25:29 AM

Tech: J. Coppage

PC: T. Sekula



**Structure ID: 065-SCX-12**

**P5 MH144LD18SP**

**MH FLAT TOP w/4 X 30" ECC Holes**

- P6) 30" - CASTING HEIGHT - 4"
- P5) 144" - MH FLAT TOP w/4 X 30" ECC Holes - 18"
- P4) 144" - MH RISER - 60"
- P3) 144" - MH RISER - 84"
- P2) 144" - MH RISER - 60"
- P1) 144" - MH MONOBASE 14F, Custom Ht - 36"
- 1) ASSEMBLY REQUIRED
- 1) CVSTENCILING
- 1) SECONDARY POUR 6" X 66" BAFFLE
- 1) SECONDARY POUR - 6" X 18" BAFFLE
- 4) 144" - Conseal CS-102 1.00"
- 2) Hole - 42

- 0 lb
- 21690 lb
- 32283 lb
- 42135 lb
- 32283 lb
- 46034 lb
- 0 lb
- 0 lb
- 4785 lb
- 1305 lb
- 0 lb
- 0 lb

Structure Total: 180514 lb

**Structure Notes:**

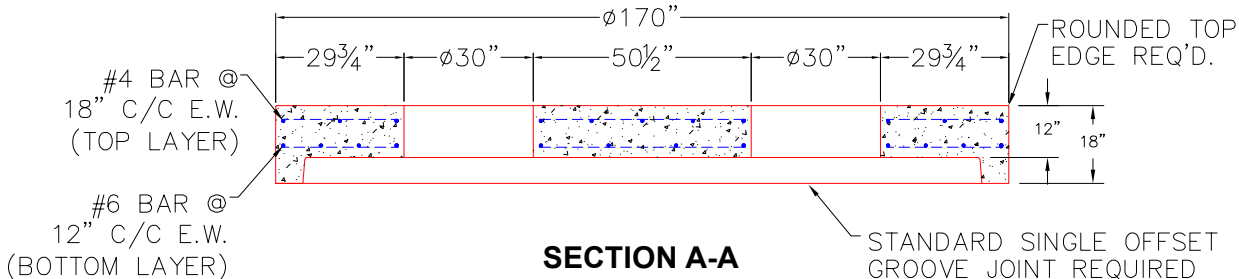
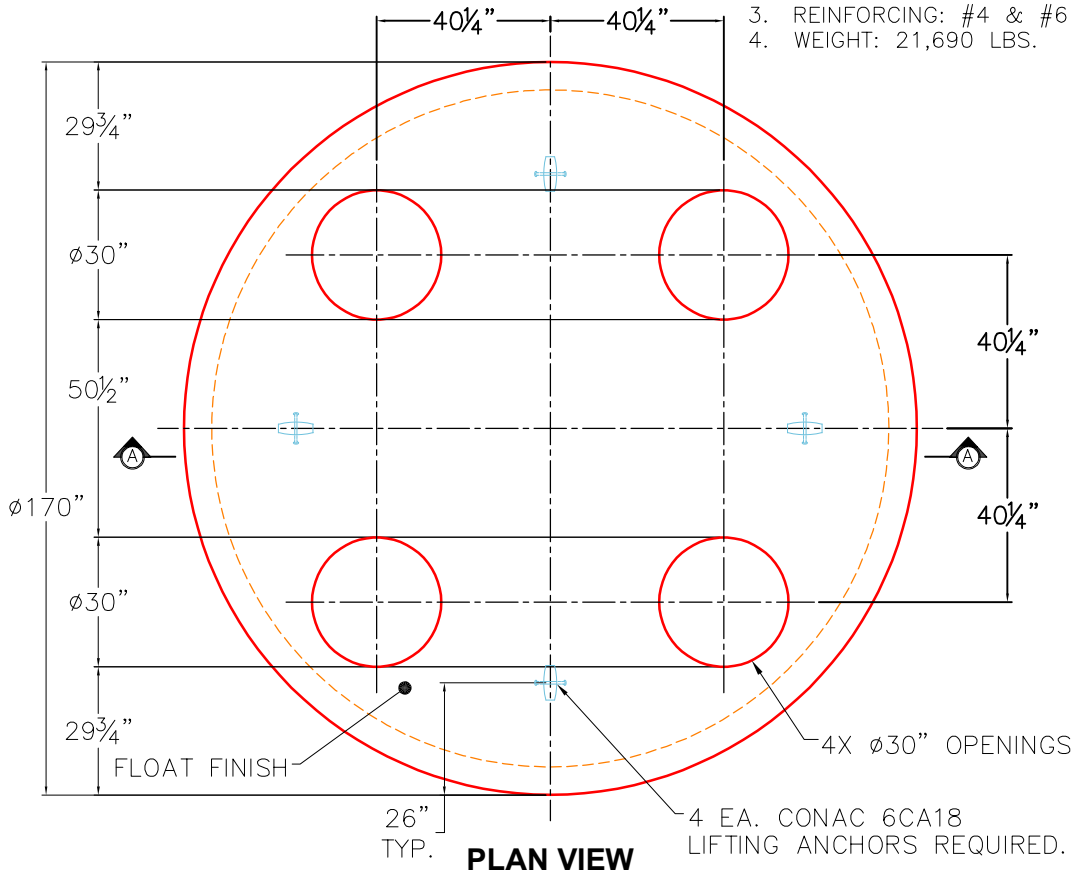
(4" TALL CASTINGS BY OTHERS)

CONTECH'S LOGO AS WELL AS THE INLET AND THE OUTLET MUST BE STENCILED ONTO THE STRUCTURE

ICAST TO INSTALL THE INTERNAL COMPONENTS

**GENERAL NOTES:**

1. MANUFACTURED TO ASTM C-478 (LATEST REVISION).
2. CONCRETE 5,000 PSI AT 28 DAYS.
3. REINFORCING: #4 & #6 BAR AS SHOWN (GRADE 60).
4. WEIGHT: 21,690 LBS.



Coating (Int): Coating (Ext):	Seam Up: Flat Seam Dn: Groove	Wall Thickness: 13"	Height (Ext): 18"	Weight (Net): 21690 lb Volume (Net): 5.54cu.yd
----------------------------------	----------------------------------	---------------------	-------------------	---