

Job Name: 26-1101 - 775714 New Clarkston JH School  
 Job Location: Clarkston, MI  
 Contractor: Contech Engineering Solutions

Plant: Beaver Dam

1/16/2026 8:25:44 AM

Tech: J. Coppage

PC: T. Sekula



**Structure ID: 065-SCX-12**

**P3 MH144RS84**

**MH RISER**

- P6) 30" - CASTING HEIGHT - 4"
- P5) 144" - MH FLAT TOP w/4 X 30" ECC Holes - 18"
- P4) 144" - MH RISER - 60"
- P3) 144" - MH RISER - 84"
- P2) 144" - MH RISER - 60"
- P1) 144" - MH MONOBASE 14F, Custom Ht - 36"
- 1) ASSEMBLY REQUIRED
- 1) CVSTENCILING
- 1) SECONDARY POUR 6" X 66" BAFFLE
- 1) SECONDARY POUR - 6" X 18" BAFFLE
- 4) 144" - Conseal CS-102 1.00"
- 2) Hole - 42

0 lb  
 21690 lb  
 32283 lb  
 42135 lb  
 32283 lb  
 46034 lb  
 0 lb  
 0 lb  
 4785 lb  
 1305 lb  
 0 lb  
 0 lb  
 -----  
 Structure Total: 180514 lb

**Structure Notes:**  
 (4" TALL CASTINGS BY OTHERS)

CONTECH'S LOGO AS WELL AS THE INLET AND THE OUTLET MUST BE STENCILED ONTO THE STRUCTURE

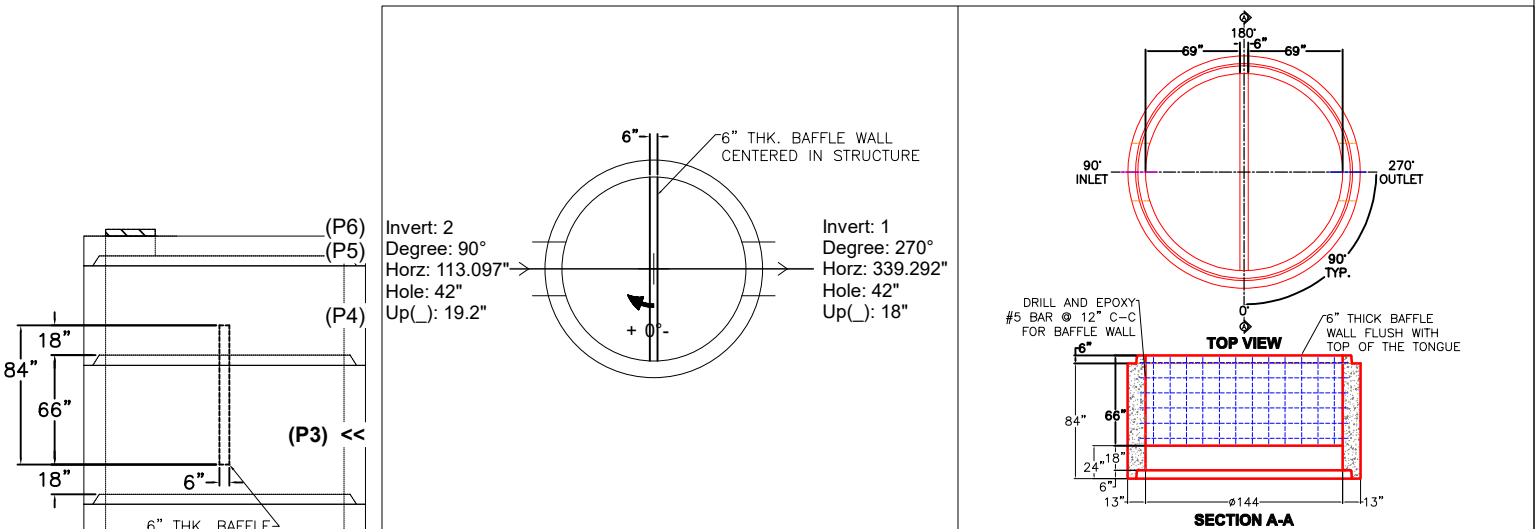
ICAST TO INSTALL THE INTERNAL COMPONENTS

**FIRST POUR DRAWING**  
**FIRST POUR - 42,135 LBS**  
**SECOND POUR - 4,785 LBS**  
**TOTAL - 46,920 LBS**

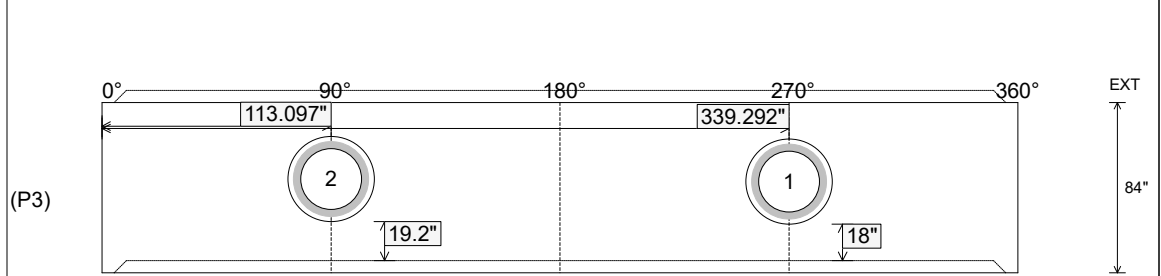
Rim: 1020.8' Rim to Invert: 11.85' Slack: 6.2" Sump: 126" Step Position:

Position	Elev	Angle	Ext. (cw)	Pipe	Pipe OD	Connector	Hole	Horz Size	Up (↓)	Offset
Invert 1	1008.95'	270°	400.553"	30" RCP B WALL	37"	Hole 42	42"	42.62"	18"	0"
Invert 2	1009.05'	90°	133.518"	30" RCP B WALL	37"	Hole 42	42"	42.62"	19.2"	0"
Invert 3										
Invert 4										
Invert 5										
Invert 6										
Invert 7										
Invert 8										

**RIGHT-SIDE UP VIEW (int. dimensions)**



**INSIDE WALL DIMENSIONS**



Coating (Int): Coating (Ext):	Seam Up: Tongue Seam Dn: Groove	Wall Thickness: 13" Floor Height: 0"	Height (Int): 84" Height (Ext): 84"	Weight (Net): 42135 lb Volume (Net): 10.76cu.yd
----------------------------------	------------------------------------	---	--	--

Job Name: 26-1101 - 775714 New Clarkston JH School  
 Job Location: Clarkston, MI  
 Contractor: Contech Engineering Solutions

Plant: Beaver Dam

1/16/2026 8:25:44 AM

Tech: J. Coppage

PC: T. Sekula



**Structure ID: 065-SCX-12**

**P3 MH144RS84**

**MH RISER**

- P6) 30" - CASTING HEIGHT - 4"
- P5) 144" - MH FLAT TOP w/4 X 30" ECC Holes - 18"
- P4) 144" - MH RISER - 60"
- P3) 144" - MH RISER - 84"
- P2) 144" - MH RISER - 60"
- P1) 144" - MH MONOBASE 14F, Custom Ht - 36"
- 1) ASSEMBLY REQUIRED
- 1) CVSTENCILING
- 1) SECONDARY POUR 6" X 66" BAFFLE
- 1) SECONDARY POUR - 6" X 18" BAFFLE
- 4) 144" - Conseal CS-102 1.00"
- 2) Hole - 42

0 lb  
 21690 lb  
 32283 lb  
 42135 lb  
 32283 lb  
 46034 lb  
 0 lb  
 0 lb  
 4785 lb  
 1305 lb  
 0 lb  
 0 lb  
 -----  
 Structure Total: 180514 lb

Structure Notes:

(4" TALL CASTINGS BY OTHERS)

CONTECH'S LOGO AS WELL AS THE INLET AND THE OUTLET MUST BE STENCILED ONTO THE STRUCTURE

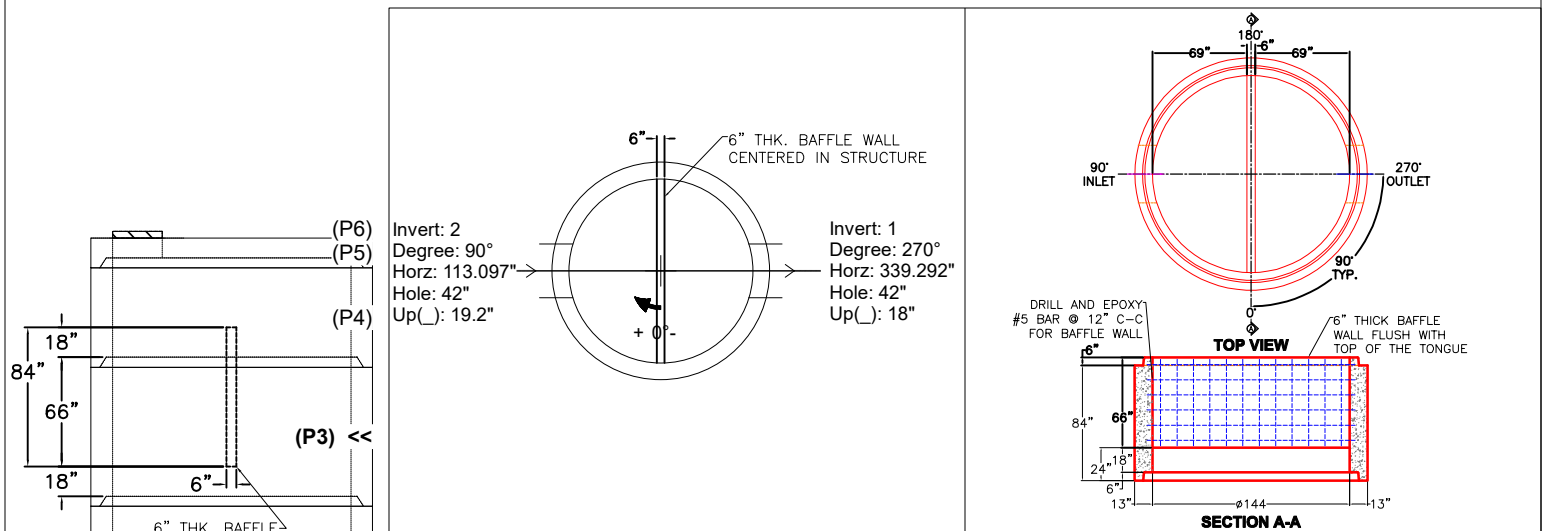
ICAST TO INSTALL THE INTERNAL COMPONENTS

**SECOND POUR DRAWING**  
**FIRST POUR - 42,135 LBS**  
**SECOND POUR - 4,785 LBS**  
**TOTAL - 46,920 LBS**

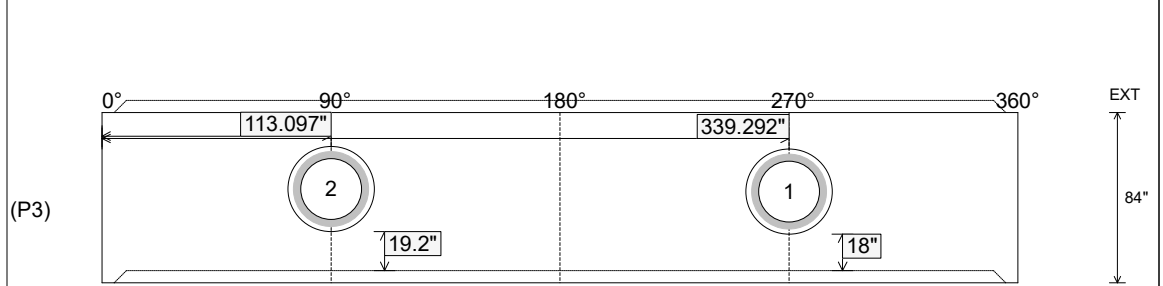
Rim: 1020.8' Rim to Invert: 11.85' Slack: 6.2" Sump: 126" Step Position:

Position	Elev	Angle	Ext. (cw)	Pipe	Pipe OD	Connector	Hole	Horz Size	Up (↓)	Offset
Invert 1	1008.95'	270°	400.553"	30" RCP B WALL	37"	Hole 42	42"	42.62"	18"	0"
Invert 2	1009.05'	90°	133.518"	30" RCP B WALL	37"	Hole 42	42"	42.62"	19.2"	0"
Invert 3										
Invert 4										
Invert 5										
Invert 6										
Invert 7										
Invert 8										

**RIGHT-SIDE UP VIEW (int. dimensions)**



**INSIDE WALL DIMENSIONS**



Coating (Int):  
 Coating (Ext):

Seam Up: Tongue  
 Seam Dn: Groove

Wall Thickness: 13"  
 Floor Height: 0"

Height (Int): 84"  
 Height (Ext): 84"

Weight (Net): 42135 lb  
 Volume (Net): 10.76cu.yd