

Job Name: 26-1100 - TVA Shawnee
 Job Location: Paducah, KY
 Contractor: TVA

Plant: 100
 4/27/2026 12:21:49 PM

Tech: Jared - A
 PC: A. Chambers



Structure ID: 61100 (3)

P2 BX048048-08LD08-32x32

BX FLAT LID 8inW w/32"x32" HOLE F/F

- P3) 32" x 32" - CASTING HEIGHT - 4"
- P2) 48" x 48" - BX FLAT LID 8inW w/32"x32" HOLE F/F - 8"
- P1) 48" x 48" - BOX BASE 8inW, 8inF F/n - 60"
- 1) CASTING - JBS 4315 F/G
- 1) 48" x 48" - Conseal CS-102 1.00"
- 1) 32" x 32" - Conseal CS-102 1.00"
- 2) Hole - 2
- 2) Hole - 8

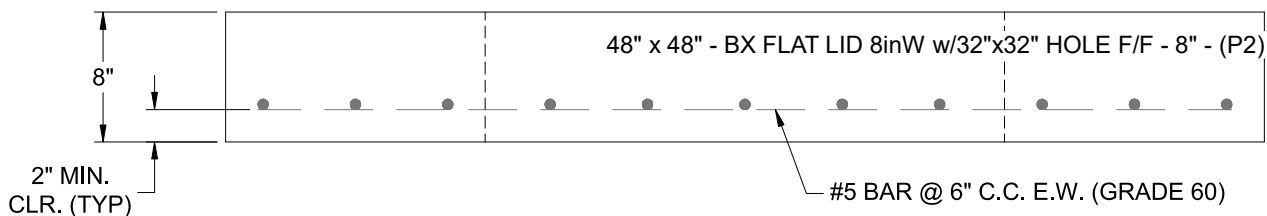
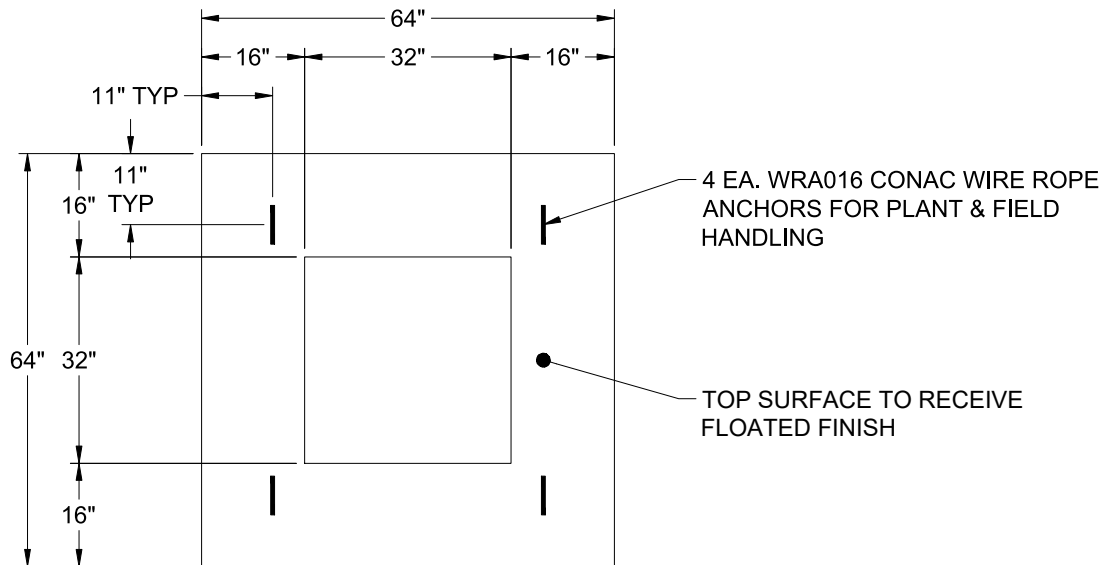
0 lb
 2062 lb
 11700 lb
 500 lb
 0 lb
 0 lb
 0 lb
 0 lb

 14262 lb

Structure Total:

Structure Notes:

1. PER ASTM C-913 SPECIFICATIONS
2. CONCRETE: 4,000 PSI AT 28 DAYS
3. REINFORCEMENT: #5 BAR @ 6" C.C. E.W. (GRADE 60) - 2" MIN. REBAR CLEARANCE (TYP)
4. JBS 4315 FRAME & GRATE SUPPLIED BY ICAST
5. LIFTERS: 4 EA. WRA016 CONAC WIRE ROPE ANCHORS FOR PLANT & FIELD HANDLING
6. TOP SURFACE TO RECEIVE FLOATED FINISH



Coating (Int):
 Coating (Ext):

Seam Up: Flat
 Seam Dn: Flat

Wall Thickness: 8"

Height (Ext): 8"

Weight (Net): 2062 lb
 Volume (Net): 0.53cu.yd