

**Job Name: 26-1100 - TVA Shawnee**  
**Job Location: Paducah, KY**  
**Contractor: TVA**

PC: A. Chambers  
 TECH: Jared - A  
 Plant: 100



Structure ID: **61100 (2)**

Spec: Storm  
 Type: BX 8inW, 8inF  
 Size: 48" x 48"

Rim: 344.25'  
 Invert: 342.58'  
 Rim to Invert: 1.67'

Sump: 51.96"  
 Floor (Top): 338.25'  
 Floor Height: 8"

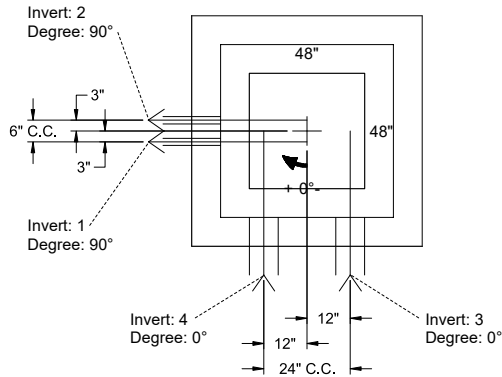
Floor (Bot): 337.583'  
 Overall Height: 6.667'  
 Slack: 0"

**Structure Notes:**

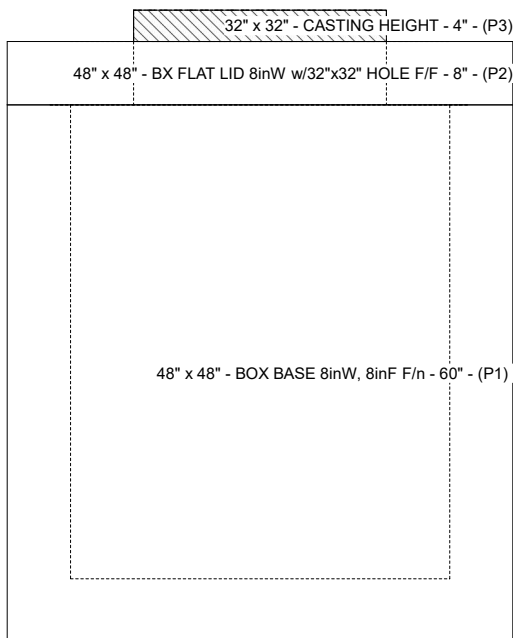
1. PER ASTM C-913 SPECIFICATIONS
2. CONCRETE: 4,000 PSI AT 28 DAYS
3. REINFORCEMENT:
  - FLAT LID: #5 BAR @ 6" C.C. E.W. (GRADE 60)
  - BASE: #5 BAR @ 12" C.C. E.W. (GRADE 60)
4. NO STORM INVERT
5. NO STEPS
6. JBS 4315 FRAME & GRATE SUPPLIED BY ICAST
7. INVERTS 1 & 2 OFFSET 3" FROM CENTER (6" CENTER-TO-CENTER)
8. INVERTS 3 & 4 OFFSET 12" FROM CENTER (24" CENTER-TO-CENTER)

**STRUCTURE SUMMARY:**

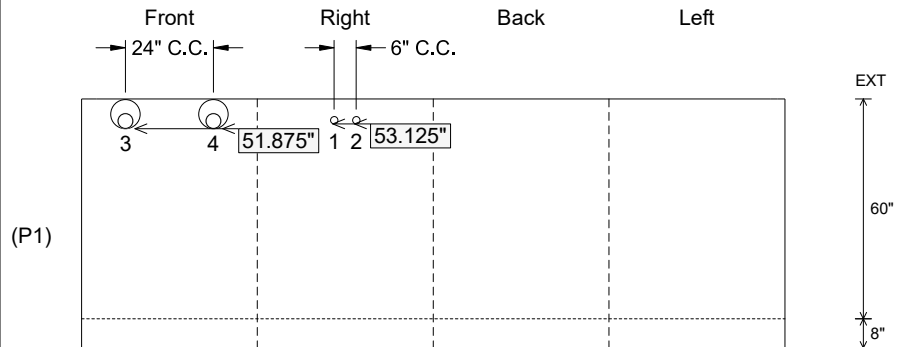
P3) 32" x 32" - CASTING HEIGHT - 4"	0 lb
P2) 48" x 48" - BX FLAT LID 8inW w/32"x32" HOLE F/F - 8"	2062 lb
P1) 48" x 48" - BOX BASE 8inW, 8inF F/n - 60"	11700 lb
1) CASTING - JBS 4315 F/G	500 lb
1) 48" x 48" - Conseal CS-102 1.00"	0 lb
1) 32" x 32" - Conseal CS-102 1.00"	0 lb
2) Hole - 2	0 lb
2) Hole - 8	0 lb
<b>Structure Total:</b>	<b>14262 lb</b>



Position	Elev	Angle	Pipe	Pipe OD	Hole	Connector	Up ( )	Ref
Rim	344.25'							
Reducer								
Invert 1	342.68'	90°	2" Orifice	2"	2"	Hole 2	53.125"	P1
Invert 2	342.68'	90°	2" Orifice	2"	2"	Hole 2	53.125"	P1
Invert 3	342.58'	0°	4" PVC SDR35	4.25"	8"	Hole 8	51.875"	P1
Invert 4	342.58'	0°	4" PVC SDR35	4.25"	8"	Hole 8	51.875"	P1
Invert 5								
Invert 6								
Invert 7								
Invert 8								



**Cast (Int. Dim.) - Interior Dimensions**



Submittal Drawing  
 4/27/2026 11:20:14 AM

SUBMITTAL  
 APPROVED BY: