

Job Name: 26-1098 LUC Sinking Creek Lift Station
 Job Location: London, KY
 Contractor: Endesol, Inc.

Plant: Beaver Dam
 1/16/2026 1:22:44 PM

Tech: J. Coppage
 PC: E. Bradley



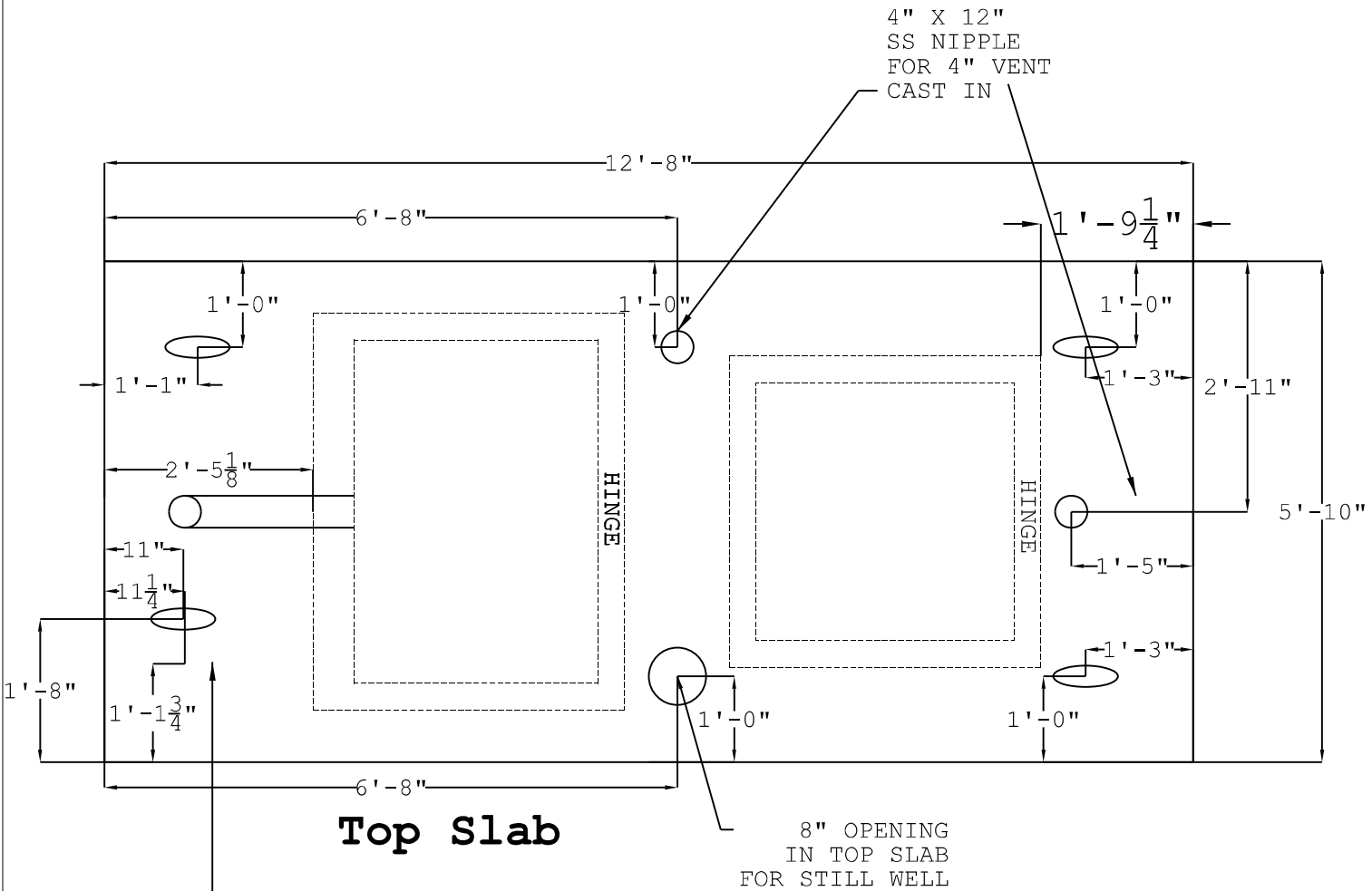
Structure ID: Lift Station

P4 CTS-X

Combined Lift Station Top Slab Custom w/Xypex

P5) 36" x 36" - CASTING HEIGHT - 0"	0 lb
P4) 72" - Combined Lift Station Top Slab Custom w/Xypex - 12"	8108 lb
P3) 72" - Combined Lift Station Walls/Floor w/XYPEX - 71"	29429 lb
P2) 72" - MH RISER Custom Ht, w/XYPEX - 36.5"	5188 lb
P1) 72" - MH BASE SQ EF Cust. Ht. 12"F (EF =102"SQ) w/ XYPEX - 72"	20973 lb
1) This Structure Includes a Cast-in Item	0 lb
1) HATCH (Alum.) - HALLIDAY W1R 34"x52"	46 lb
1) HATCH (Alum.) - HALLIDAY W1R 36"x36"	46 lb
1) SECONDARY POUR - EXTENDED BASE SLAB	0 lb
1) SECONDARY POUR - WALLS FOR VAULT SECTION	0 lb
1) SECONDARY POUR - VAULT SECTION EXTENSION	0 lb
1) ASSEMBLY REQUIRED	0 lb
2) 72" - DBL 1"x14.5' Butyl (2x)	0 lb
2) PSX - 12-08 NYLO	16 lb
Structure Total:	63806 lb

Structure Notes:
 1. PER ASTM C478 SPECIFICATIONS.
 2. CONCRETE = 4,000 PSI AT 28 DAYS.
 3. REINFORCING PER ASTM A615 (GRADE 60).
 - TOP SLAB (As .31) #5 BARS AT 8" C.C.E.W.
 - RISER/WALLS (As .18)
 - FLOOR (As .37) #5 BARS AT 10" C.C.E.W.



Top Slab

CONCRETE MIX DESIGN:
 5,000 PSI @ 28 DAYS
 XYPEX RED ADMIXTURE

CARBOLINE 300M COATING, TWO COATS:
 ALL INTERIOR WALLS
 BOTTOM OF TOP SLAB IN WET WELL AREA
 BOTTOM OF COMBO SECTION IN WET WELL AREA

Lid:
 #5@8" OC EW T&B

Coating (Int): Coating (Ext):	Seam Up: Flat Seam Dn: Flat	Wall Thickness: 7"	Height (Ext): 12"	Weight (Net): 8108 lb Volume (Net): 2.07cu.yd
----------------------------------	--------------------------------	--------------------	-------------------	--