

Job Name: 26-1098 LUC Sinking Creek Lift Station
 Job Location: London, KY
 Contractor: Endesol, Inc.

Plant: Beaver Dam
 1/16/2026 1:22:43 PM

Tech: J. Coppage
 PC: E. Bradley



Structure ID: Lift Station

P3 CTRS-X

Combined Lift Station Walls/Floor w/XYPEX

- P5) 36" x 36" - CASTING HEIGHT - 0"
- P4) 72" - Combined Lift Station Top Slab Custom w/ Xypex - 12"
- P3) 72" - Combined Lift Station Walls/Floor w/XYPEX - 71"
- P2) 72" - MH RISER Custom Ht. w/XYPEX - 36.5"
- P1) 72" - MH BASE SQ EF Cust. Ht. 12"F (EF =102"SQ) w/ XYPEX - 72"
- 1) This Structure Includes a Cast-in Item
- 1) HATCH (Alum.) - HALLIDAY W1R 34"x52"
- 1) HATCH (Alum.) - HALLIDAY W1R 36"x36"
- 1) SECONDARY POUR - EXTENDED BASE SLAB
- 1) SECONDARY POUR - WALLS FOR VAULT SECTION
- 1) SECONDARY POUR - VAULT SECTION EXTENSION
- 1) ASSEMBLY REQUIRED
- 2) 72" - DBL 1"x14.5' Butyl (2x)
- 2) PSX - 12-08 NYLO

0 lb
 8108 lb
 29429 lb
 5188 lb
 20973 lb
 0 lb
 46 lb
 46 lb
 0 lb
 0 lb
 0 lb
 0 lb
 0 lb
 0 lb
 16 lb

 63806 lb

Structure Notes:
 1. PER ASTM C478 SPECIFICATIONS.
 2. CONCRETE = 4,000 PSI AT 28 DAYS.
 3. REINFORCING PER ASTM A615 (GRADE 60).
 - TOP SLAB (As .31) #5 BARS AT 6" C.C.E.W.
 - RISER/WALLS (As .18)
 - FLOOR (As .37) #5 BARS AT 10" C.C.E.W.
 CONCRETE MIX DESIGN:
 5,000 PSI @ 28 DAYS
 XYPEX RED ADMIXTURE
 CARBOLINE 300M COATING, TWO COATS:
 ALL INTERIOR WALLS
 BOTTOM OF TOP SLAB IN WET WELL AREA
 BOTTOM OF COMBO SECTION IN WET WELL AREA

GREEN - FIRST POUR FIRST POUR - 2,048 LBS
 YELLOW - SECOND POUR SECOND POUR - 4,277 LBS
 CYAN - THIRD POUR THIRD POUR - 23,104 LBS

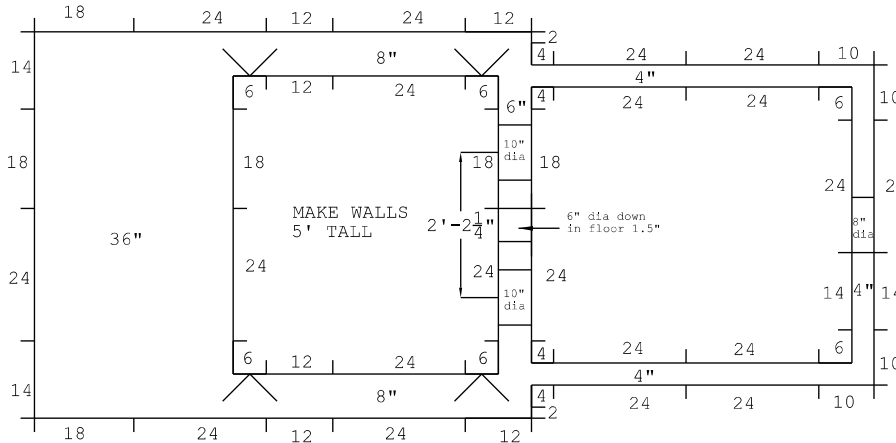
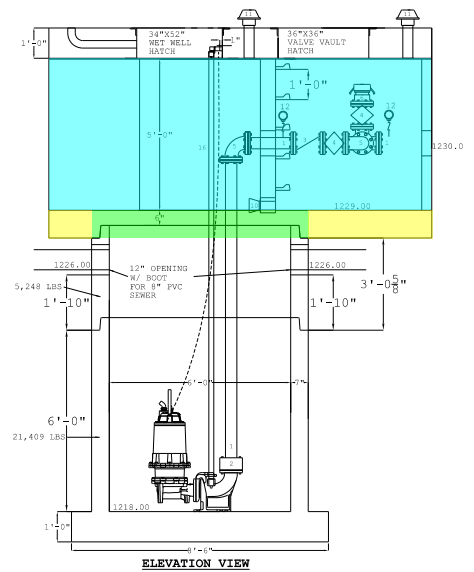
Structure Total:

First Pour Drawing

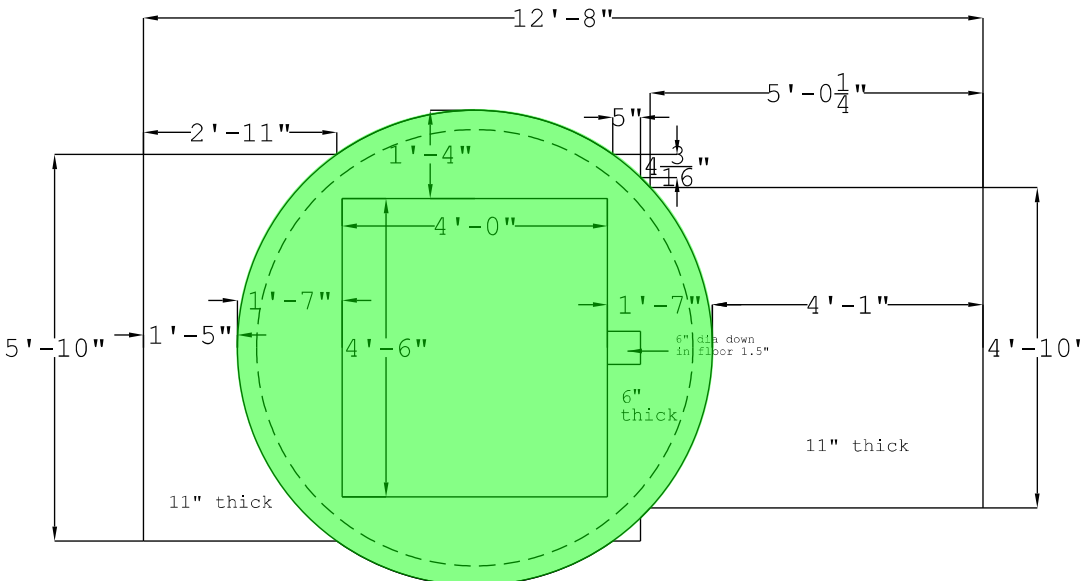
1ST pour use the 6' dia. jacket, make middle area 6" thick (rather than 12") and wet stick verticals and countersink 6" hole x 1.5" down

2nd pour add the extensions to the sides, 11" thick and wet stick verticals

3rd pour is the 5' tall walls with holes



Walls/Forms



Base Slab

Base
 Walls:
 #5@6" OC EW
 Lid:
 #5@8" OC EW T&B

Coating (Int): Coating (Ext):	Seam Up: Tongue Seam Dn: Groove	Wall Thickness: 7"	Height (Ext): 71"	Weight (Net): 29429 lb Volume (Net): 7.52cu.yd
----------------------------------	------------------------------------	--------------------	-------------------	---

Job Name: 26-1098 LUC Sinking Creek Lift Station
 Job Location: London, KY
 Contractor: Endesol, Inc.

Plant: Beaver Dam
 1/16/2026 1:22:43 PM

Tech: J. Coppage
 PC: E. Bradley



Structure ID: Lift Station

P3 CTRS-X

Combined Lift Station Walls/Floor w/XYPEX

- P5) 36" x 36" - CASTING HEIGHT - 0"
- P4) 72" - Combined Lift Station Top Slab Custom w/Xypex - 12"
- P3) 72" - Combined Lift Station Walls/Floor w/XYPEX - 71"
- P2) 72" - MH RISER Custom Ht, w/XYPEX - 36.5"
- P1) 72" - MH BASE SQ EF Cust. Ht. 12"F (EF =102"SQ) w/ XYPEX - 72"
- 1) This Structure Includes a Cast-in Item
- 1) HATCH (Alum.) - HALLIDAY W1R 34"x52"
- 1) HATCH (Alum.) - HALLIDAY W1R 36"x36"
- 1) SECONDARY POUR - EXTENDED BASE SLAB
- 1) SECONDARY POUR - WALLS FOR VAULT SECTION
- 1) SECONDARY POUR - VAULT SECTION EXTENSION
- 1) ASSEMBLY REQUIRED
- 2) 72" - DBL 1"x14.5' Butyl (2x)
- 2) PSX - 12-08 NYLO

0 lb
 8108 lb
 29429 lb
 5188 lb
 20973 lb
 0 lb
 46 lb
 46 lb
 0 lb
 0 lb
 0 lb
 0 lb
 0 lb
 0 lb
 16 lb

 63806 lb

Structure Notes:
 1. PER ASTM C478 SPECIFICATIONS.
 2. CONCRETE = 4,000 PSI AT 28 DAYS.
 3. REINFORCING PER ASTM A615 (GRADE 60).
 - TOP SLAB (As .31) #5 BARS AT 6" C.C.E.W.
 - RISER/WALLS (As .18)
 - FLOOR (As .37) #5 BARS AT 10" C.C.E.W.
 CONCRETE MIX DESIGN:
 5,000 PSI @ 28 DAYS
 XYPEX RED ADMIXTURE
 CARBOLINE 300M COATING, TWO COATS:
 ALL INTERIOR WALLS
 BOTTOM OF TOP SLAB IN WET WELL AREA
 BOTTOM OF COMBO SECTION IN WET WELL AREA

GREEN - FIRST POUR FIRST POUR - 2,048 LBS
 YELLOW - SECOND POUR SECOND POUR - 4,277 LBS
 CYAN - THIRD POUR THIRD POUR - 23,104 LBS

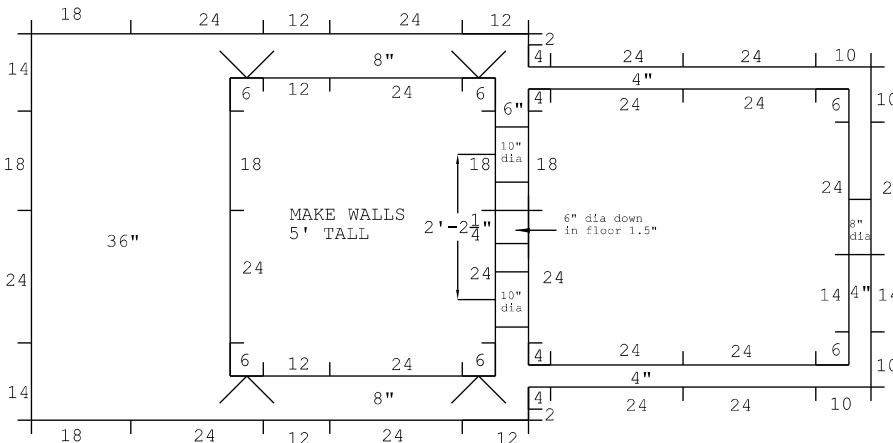
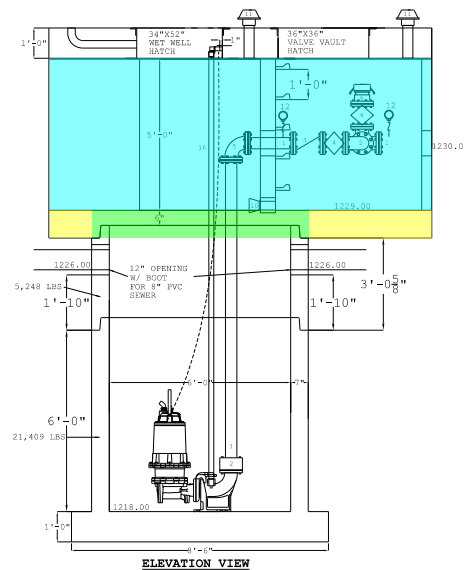
Structure Total:

Second Pour Drawing

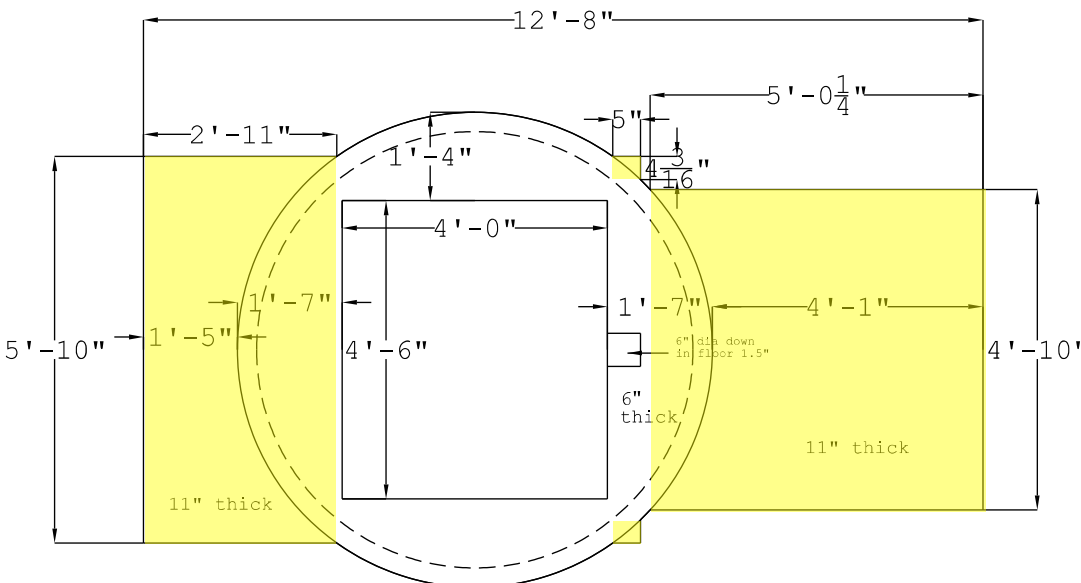
1ST pour use the 6' dia. jacket, make middle area 6" thick (rather than 12") and wet stick verticals and countersink 6" hole x 1.5" down

2nd pour add the extensions to the sides, 11" thick and wet stick verticals

3rd pour is the 5' tall walls with holes



Walls/Forms



Base Slab

Base
 Walls:
 #5@6" OC EW
 Lid:
 #5@8" OC EW T&B

Coating (Int): Coating (Ext):	Seam Up: Tongue Seam Dn: Groove	Wall Thickness: 7"	Height (Ext): 71"	Weight (Net): 29429 lb Volume (Net): 7.52cu.yd
----------------------------------	------------------------------------	--------------------	-------------------	---

