

Job Name: 26-1098 LUC Sinking Creek Lift Station  
 Job Location: London, KY  
 Contractor: Endesol, Inc.

Plant: Beaver Dam

Tech: J. Coppage

1/16/2026 1:23:02 PM

PC: E. Bradley



**Structure ID: Lift Station**

**P2 MH072RSVFX**

**MH RISER Custom Ht, w/XYPEX**

- P5) 36" x 36" - CASTING HEIGHT - 0"
- P4) 72" - Combined Lift Station Top Slab Custom w/Xypex - 12"
- P3) 72" - Combined Lift Station Walls/Floor w/XYPEX - 71"
- P2) 72" - MH RISER Custom Ht, w/XYPEX - 36.625"
- P1) 72" - MH BASE SQ EF Cust. Ht. 12"F (EF =102"SQ) w/ XYPEX - 72"
- 1) This Structure Includes a Cast-in Item
- 1) HATCH (Alum.) - HALLIDAY W1R 34"x52"
- 1) HATCH (Alum.) - HALLIDAY W1R 36"x36"
- 1) SECONDARY POUR - EXTENDED BASE SLAB
- 1) SECONDARY POUR - WALLS FOR VAULT SECTION
- 1) SECONDARY POUR - VAULT SECTION EXTENSION
- 1) ASSEMBLY REQUIRED
- 2) 72" - DBL 1"x14.5' Butyl (2x)
- 2) PSX - 12-08 NYLO

- Structure Notes:**
1. PER ASTM C478 SPECIFICATIONS.
  2. CONCRETE = 4,000 PSI AT 28 DAYS.
  3. REINFORCING PER ASTM A615 (GRADE 60).
    - TOP SLAB (As .31) #5 BARS AT 6" C.C.E.W.
    - RISER/WALLS (As .18)
    - FLOOR (As .37) #5 BARS AT 10" C.C.E.W.

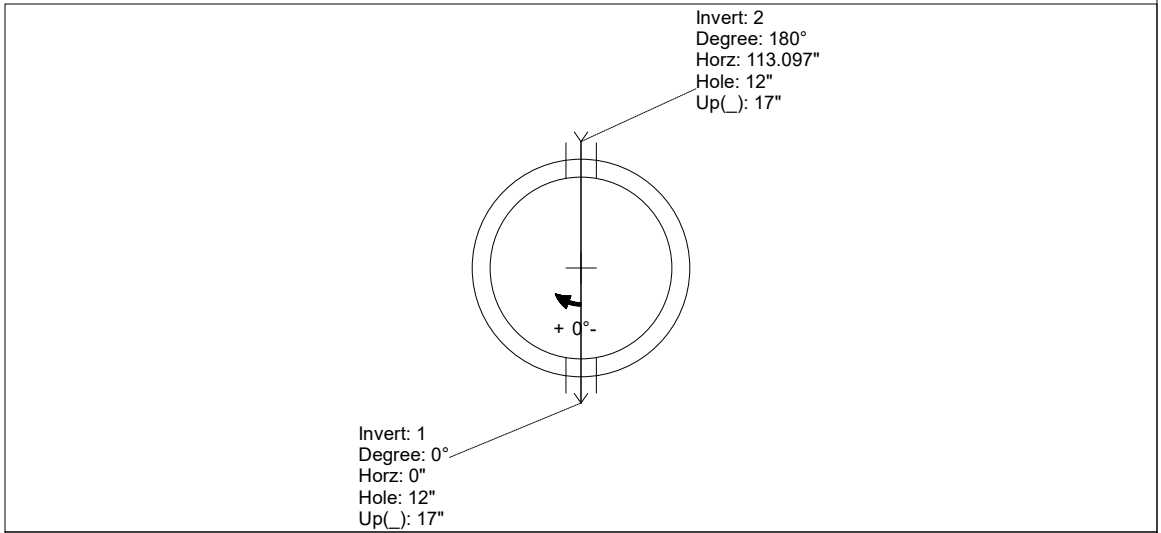
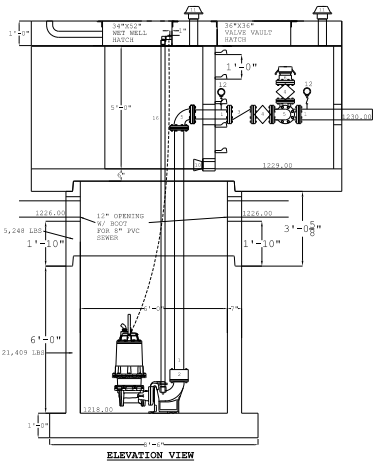
0 lb  
 8108 lb  
 29429 lb  
 5188 lb  
 20973 lb  
 0 lb  
 46 lb  
 46 lb  
 0 lb  
 0 lb  
 0 lb  
 0 lb  
 0 lb  
 0 lb  
 16 lb

Structure Total: 63806 lb

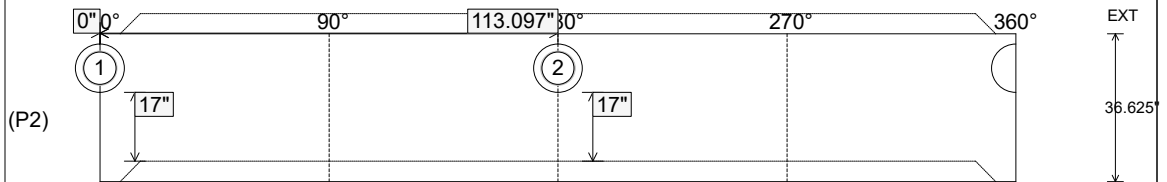
Rim: 1234' Rim to Invert: 8' Slack: 0.498" Sump: 96" Step Position:

Position	Elev	Angle	Ext. (cw)	Pipe	Pipe OD	Connector	Hole	Horz Size	Up ( )	Offset
Invert 1	1226'	0°	0"	8" PVC SDR35	8.5"	PSX 12-08 NYLO	12"	12.056"	17"	0"
Invert 2	1226'	180°	135.088"	8" PVC SDR35	8.5"	PSX 12-08 NYLO	12"	12.056"	17"	0"
Invert 3										
Invert 4										
Invert 5										
Invert 6										
Invert 7										
Invert 8										

**RIGHT-SIDE UP VIEW (int. dimensions)**



**INSIDE WALL DIMENSIONS**



Coating (Int):  
 Coating (Ext):

Seam Up: Tongue  
 Seam Dn: Groove

Wall Thickness: 7"  
 Floor Height: 0"

Height (Int): 36.5"  
 Height (Ext): 36.5"

Weight (Net): 5188 lb  
 Volume (Net): 1.32cu.yd