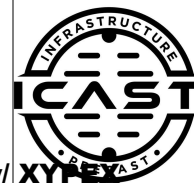


Job Name: 26-1098 LUC Sinking Creek Lift Station
 Job Location: London, KY
 Contractor: Endesol, Inc.

Plant: Beaver Dam
 1/16/2026 1:22:33 PM

Tech: J. Coppage
 PC: E. Bradley



Structure ID: Lift Station

P1 MH072BAEVFX

MH BASE SQ EF Cust. Ht. 12"F (EF =102"SQ) w/ XYPEX

- P5) 36" x 36" - CASTING HEIGHT - 0"
- P4) 72" - Combined Lift Station Top Slab Custom w/Xypex - 12"
- P3) 72" - Combined Lift Station Walls/Floor w/XYPEX - 71"
- P2) 72" - MH RISER Custom Ht. w/XYPEX - 36.5"
- P1) 72" - MH BASE SQ EF Cust. Ht. 12"F (EF =102"SQ) w/ XYPEX - 72"
- 1) This Structure Includes a Cast-in Item
- 1) HATCH (Alum.) - HALLIDAY W1R 34"x52"
- 1) HATCH (Alum.) - HALLIDAY W1R 36"x36"
- 1) SECONDARY POUR - EXTENDED BASE SLAB
- 1) SECONDARY POUR - WALLS FOR VAULT SECTION
- 1) SECONDARY POUR - VAULT SECTION EXTENSION
- 1) ASSEMBLY REQUIRED
- 2) 72" - DBL 1"x14.5' Butyl (2x)
- 2) PSX - 12-08 NYLO

0 lb
 8108 lb
 29429 lb
 5188 lb
 20973 lb
 0 lb
 46 lb
 46 lb
 0 lb
 0 lb
 0 lb
 0 lb
 0 lb
 0 lb
 16 lb

Structure Notes:

1. PER ASTM C478 SPECIFICATIONS.
2. CONCRETE = 4,000 PSI AT 28 DAYS.
3. REINFORCING PER ASTM A615 (GRADE 60).
 - TOP SLAB (As .31) #5 BARS AT 6" C.C.E.W.
 - RISER/WALLS (As .18)
 - FLOOR #5 BARS AT 12" C.C.E.W.
 TOP AND BTM MAT

FIRST POUR DRAWING
FIRST POUR - 16,345 LBS.

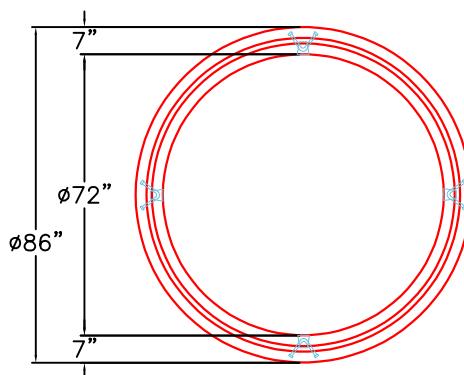
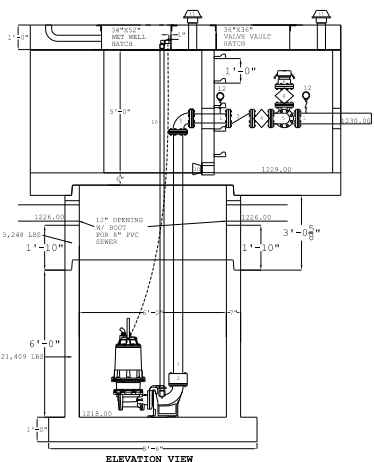
SECOND POUR - 4,628 LBS.
TOTAL - 20,973 LBS.

Structure Total: 63806 lb

Rim: 1234' Rim to Invert: 8' Slack: 0.498" Sump: 96" Step Position:

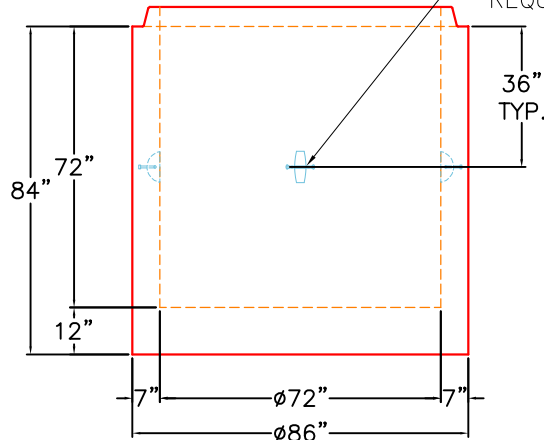
Position	Elev	Angle	Ext. (cw)	Pipe	Pipe OD	Connector	Hole	Horz Size	Up (L)	Offset
Invert 1										
Invert 2										
Invert 3										
Invert 4										
Invert 5										
Invert 6										
Invert 7										
Invert 8										

RIGHT-SIDE UP VIEW (int. dimensions)



TOP VIEW

4 EA. CONAC 6CA18 LIFTING ANCHORS REQUIRED.



FRONT VIEW

Coating (Int):
 Coating (Ext):

Seam Up: Tongue
 Seam Dn: n/a

Wall Thickness: 7"
 Floor Height: 12"

Height (Int): 72"
 Height (Ext): 84"

Weight (Net): 20973 lb
 Volume (Net): 5.36cu.yd

Job Name: 26-1098 LUC Sinking Creek Lift Station
 Job Location: London, KY
 Contractor: Endesol, Inc.

Plant: Beaver Dam

Tech: J. Coppage

1/16/2026 1:22:33 PM

PC: E. Bradley



Structure ID: Lift Station

P1 MH072BAEVFX

MH BASE SQ EF Cust. Ht. 12"F (EF =102"SQ) w/ XYPEX

- P5) 36" x 36" - CASTING HEIGHT - 0"
- P4) 72" - Combined Lift Station Top Slab Custom w/Xypex - 12"
- P3) 72" - Combined Lift Station Walls/Floor w/XYPEX - 71"
- P2) 72" - MH RISER Custom Ht, w/XYPEX - 36.5"
- P1) 72" - MH BASE SQ EF Cust. Ht. 12"F (EF =102"SQ) w/ XYPEX - 72"
- 1) This Structure Includes a Cast-in Item
- 1) HATCH (Alum.) - HALLIDAY W1R 34"x52"
- 1) HATCH (Alum.) - HALLIDAY W1R 36"x36"
- 1) SECONDARY POUR - EXTENDED BASE SLAB
- 1) SECONDARY POUR - WALLS FOR VAULT SECTION
- 1) SECONDARY POUR - VAULT SECTION EXTENSION
- 1) ASSEMBLY REQUIRED
- 2) 72" - DBL 1"x14.5' Butyl (2x)
- 2) PSX - 12-08 NYLO

0 lb
 8108 lb
 29429 lb
 5188 lb
 20973 lb
 0 lb
 46 lb
 46 lb
 0 lb
 0 lb
 0 lb
 0 lb
 0 lb
 0 lb
 16 lb

- Structure Notes:**
1. PER ASTM C478 SPECIFICATIONS.
 2. CONCRETE = 4,000 PSI AT 28 DAYS.
 3. REINFORCING PER ASTM A615 (GRADE 60).
 - TOP SLAB (As .31) #5 BARS AT 6" C.C.E.W.
 - RISER/WALLS (As .18)
 - FLOOR #5 BARS AT 12" C.C.E.W.
 TOP AND BTM MAT

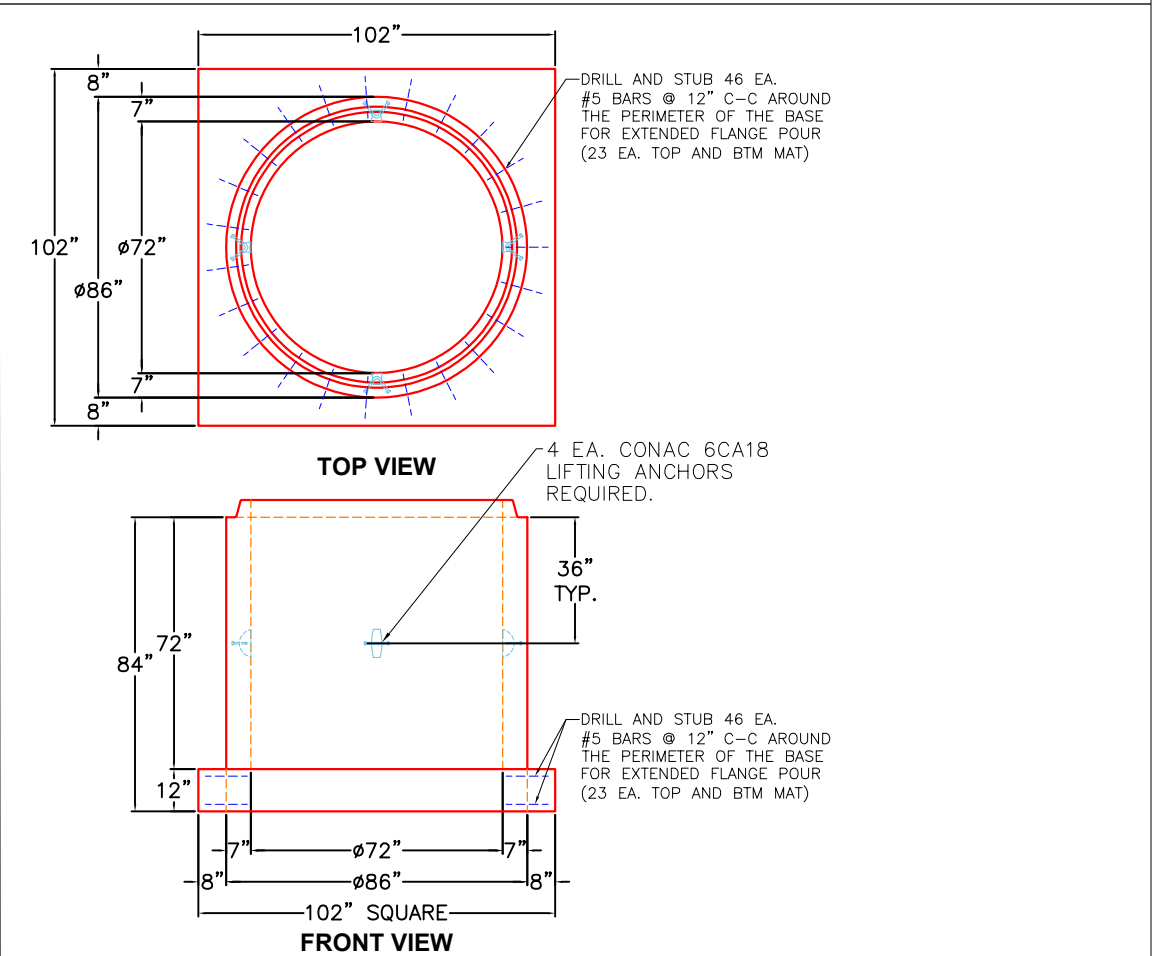
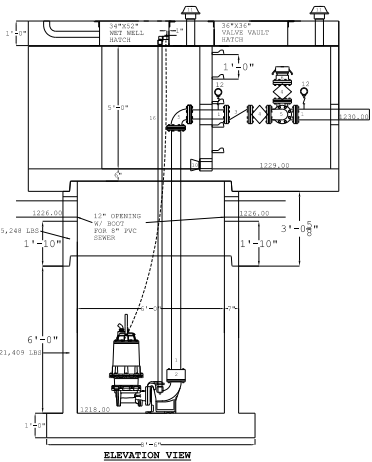
SECOND POUR DRAWING
FIRST POUR - 16,345 LBS.
SECOND POUR - 4,628 LBS.
TOTAL - 20,973 LBS.

Structure Total: 63806 lb

Rim: 1234' Rim to Invert: 8' Slack: 0.498" Sump: 96" Step Position:

Position	Elev	Angle	Ext. (cw)	Pipe	Pipe OD	Connector	Hole	Horz Size	Up (L)	Offset
Invert 1										
Invert 2										
Invert 3										
Invert 4										
Invert 5										
Invert 6										
Invert 7										
Invert 8										

RIGHT-SIDE UP VIEW (int. dimensions)



Coating (Int):
 Coating (Ext):

Seam Up: Tongue
 Seam Dn: n/a

Wall Thickness: 7"
 Floor Height: 12"

Height (Int): 72"
 Height (Ext): 84"

Weight (Net): 20973 lb
 Volume (Net): 5.36cu.yd