

Job Name: 26-1090 - Admin Building Storm Shelter
 Job Location: Mount Vernon, IN
 Contractor: Russell's Excavating

Plant: 100

3/6/2026 1:45:01 PM

Tech: Jared - A

PC: Andy Chambers



Structure ID: 61090 (1)

P2 BX024024-08LD06S

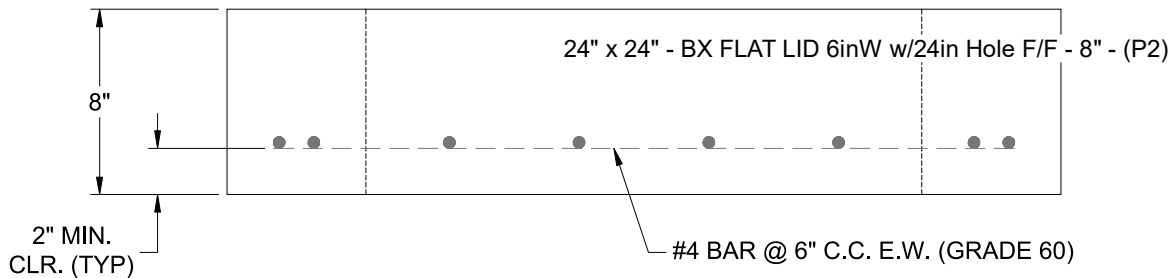
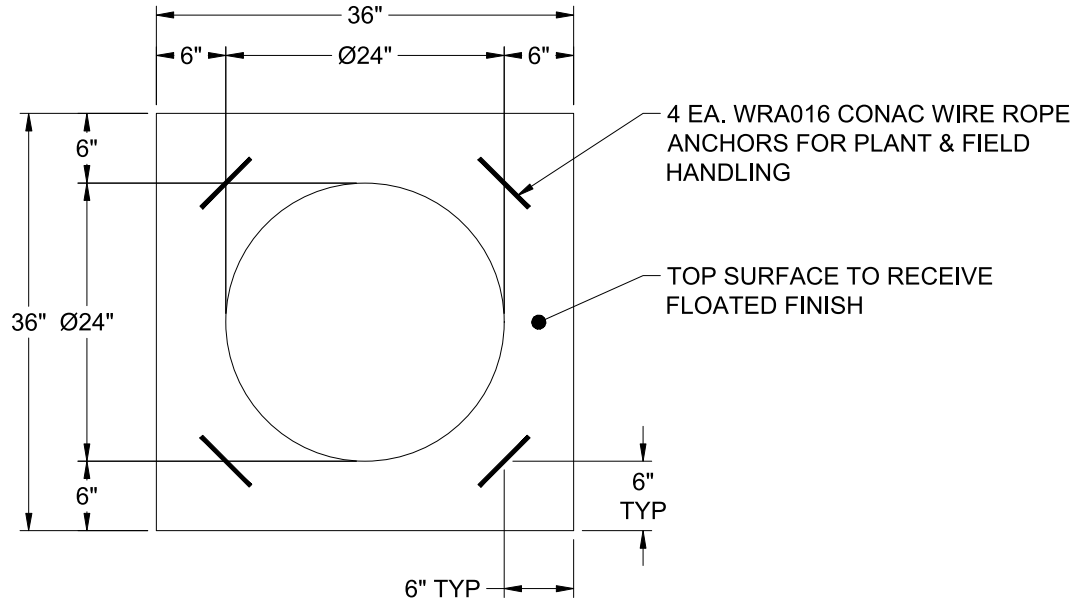
BX FLAT LID 6inW w/24in Hole F/F

- P3) 24" - CASTING HEIGHT - 7"
- P2) 24" x 24" - BX FLAT LID 6inW w/24in Hole F/F - 8"
- P1) 24" x 24" - BOX BASE 6inW, 8inF, Variable Ht F/n - 24"
- 1) CASTING - HOE MCB-315-BH
- 1) 24" x 24" - Conseal CS-102 1.00"
- 3) Hole - 10

	0 lb
	566 lb
	2201 lb
	250 lb
	0 lb
	0 lb
Structure Total:	3018 lb

Structure Notes:

1. PER ASTM C-913 SPECIFICATIONS
2. CONCRETE: 4,000 PSI AT 28 DAYS
3. REINFORCEMENT: #4 BAR @ 6" C.C. E.W. (GRADE 60) - 2" MIN. REBAR CLEARANCE (TYP)
4. HOE MCB-315-BH FRAME & BEEHIVE GRATE SUPPLIED BY ICAST
5. LIFTERS: 4 EA. WRA016 CONAC WIRE ROPE ANCHORS FOR PLANT & FIELD HANDLING
6. TOP SURFACE TO RECEIVE FLOATED FINISH



Coating (Int): Coating (Ext):	Seam Up: Flat Seam Dn: Flat	Wall Thickness: 6"	Height (Ext): 8"	Weight (Net): 566 lb Volume (Net): 0.14cu.yd
----------------------------------	--------------------------------	--------------------	------------------	---