

Job Name: 26-1089 ADS Voce Hotel  
 Job Location: Nashville, TN  
 Contractor: ADS Advances Drainage Systems, Inc.

Plant: Beaver Dam  
 1/23/2026 10:35:27 AM

Tech: J. Coppage  
 PC: C. Goff



**Structure ID: Storm S6**

**P4 MH072LD10-24CC**

**MH FLAT LID w/24" CC Hole**

- P5) 24" - CASTING HEIGHT - 7"
- P4) 72" - MH FLAT LID w/24" CC Hole - 10"
- P3) 72" - MH RISER NO STEPS - 42"
- P2) 72" - MH RISER NO STEPS - 48"
- P1) 72" - MH BASE Custom Ht - 26"
- 1) ASSEMBLY REQUIRED
- 3) 72" - Conseal CS-102 1.00"
- 1) Hole - 24
- 1) Hole - 18

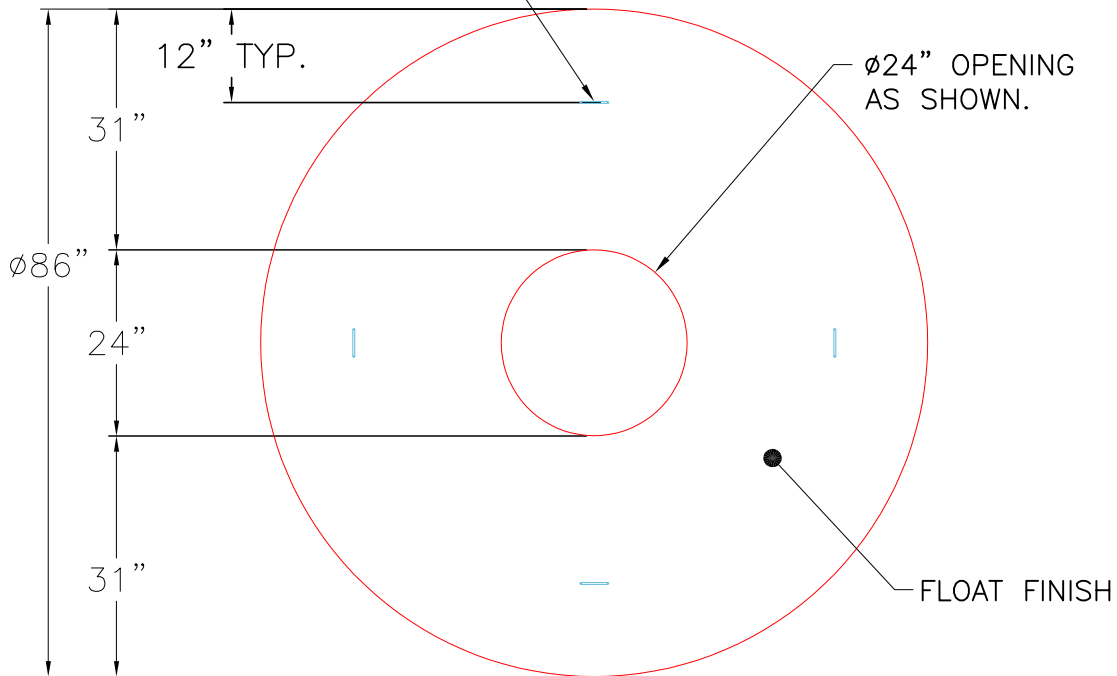
- 0 lb Structure Notes:
1. MC-375 STORM BY ICAST.
  2. PER ASTM C478 SPECIFICATIONS.
  3. CONCRETE = 4,000 PSI AT 28 DAYS.
  4. REINFORCING PER ASTM A615 (GRADE 60).
    - TOP SLAB (SEE BELOW)
    - RISER/WALLS (As .18)
    - FLOOR (As .37) #5 BARS AT 10" C-C E.W.

Structure Total: 24885 lb

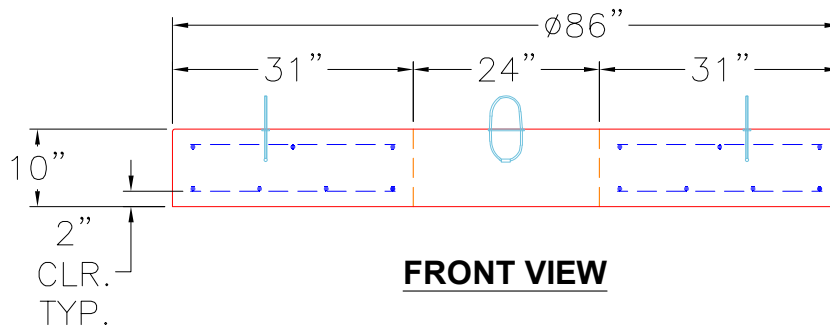
GENERAL NOTES:

1. MANUFACTURED TO ASTM C-478 (LATEST REVISION).
2. CONCRETE 5,000 PSI AT 28 DAYS.
3. REINFORCING: TOP MAT #4 @ 18" O.C. E.W.  
 BOTTOM MAT #4 @ 9" O.C. E.W.  
 (GRADE 60)

4 EA. CONAC WRA012 WIRE ROPE ANCHORS CAST IN AS SHOWN FOR PLANT AND FIELD HANDLING.



**TOP VIEW**



**FRONT VIEW**

Coating (Int):  
 Coating (Ext):

Seam Up: Flat  
 Seam Dn: Flat

Wall Thickness: 7"

Height (Ext): 10"

Weight (Net): 4496 lb  
 Volume (Net): 1.15cu.yd