

Job Name: 26-1077 - Westside Markets of Greensboro Village
 Job Location: Gallatin, TN
 Contractor: Cleary Construction, Inc.

Plant: 100

Tech: J. Horsley - F

3/27/2026 4:34:55 PM

PC: C. Goff

Structure ID: G1

P2 MH060LD13

MH FLAT TOP w/ 24" ECC Hole F/G

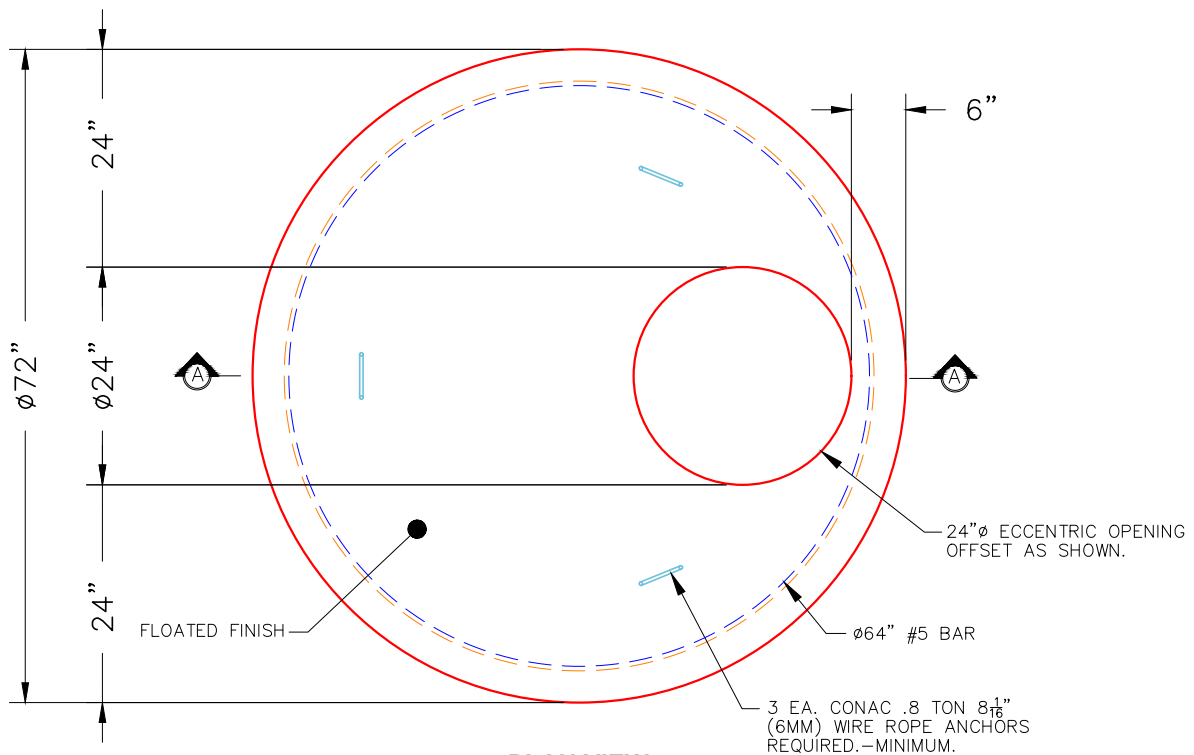
- P3) 24" - CASTING HEIGHT - 7"
- P2) 60" - MH FLAT TOP w/ 24" ECC Hole F/G - 13"
- P1) 60" - MH BASE Custom Ht T/n - 70"
- 1) 60" - STORM INVERT CHANNEL - 1/4 HEIGHT
- 1) 60" - Conseal CS-102 1.00"
- 2) Hole - 46
- 6) MH Step ML-10-TDS-NCR - 10"

0 lb
 2869 lb
 8180 lb
 1700 lb
 0 lb
 0 lb
 0 lb

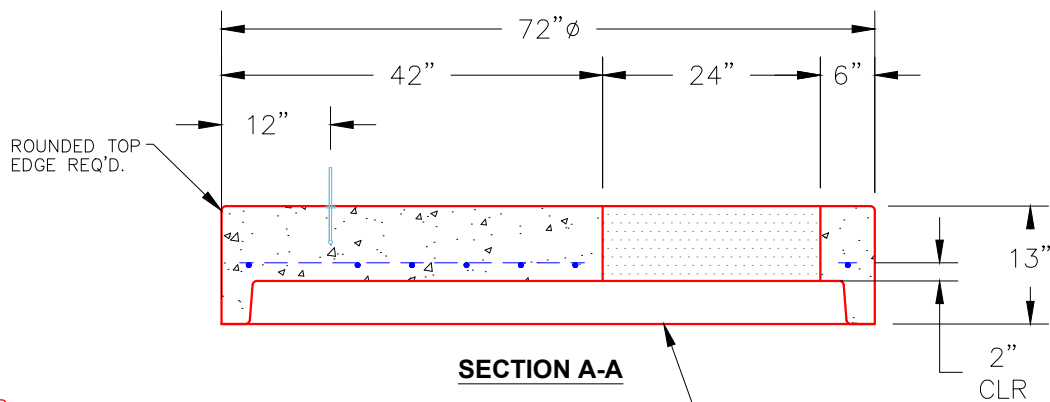
 Structure Total: 12749 lb

Structure Notes:
 1. PER ASTM C478 SPECIFICATIONS.
 2. CONCRETE = 4,000 PSI AT 28 DAYS.
 3. CASTING SUPPLIED BY OTHERS (JBS 1150 F/C STORM).

REINFORCING PER ASTM A615 (GRADE 60).
 - TOP SLAB (As .62) #5 BARS AT 6" C.C.E.W..
 - RISER/WALLS (As .18)
 - FLOOR (As .37) #5 BARS AT 10" C.C.E.W.



PLAN VIEW



SECTION A-A

NOTES:

- 1. MANUFACTURED TO ASTM C-478 (LATEST REVISION).
- 2. CONCRETE: 4,000 PSI AT 28 DAYS.
- 3. REINFORCING: #5 BAR @ 6" O.C. E.W. (GRADE 60).

Coating (Int):
 Coating (Ext):

Seam Up: Flat
 Seam Dn: Groove

Wall Thickness: 6"

Height (Ext): 13"

Weight (Net): 2869 lb
 Volume (Net): 0.73cu.yd