



Structure ID: G0

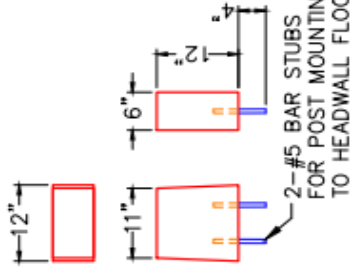
P1 HWPC36FD

36" - PIPE CULVERT HEADWALL w/Flat Bottom/Dissipators F/F

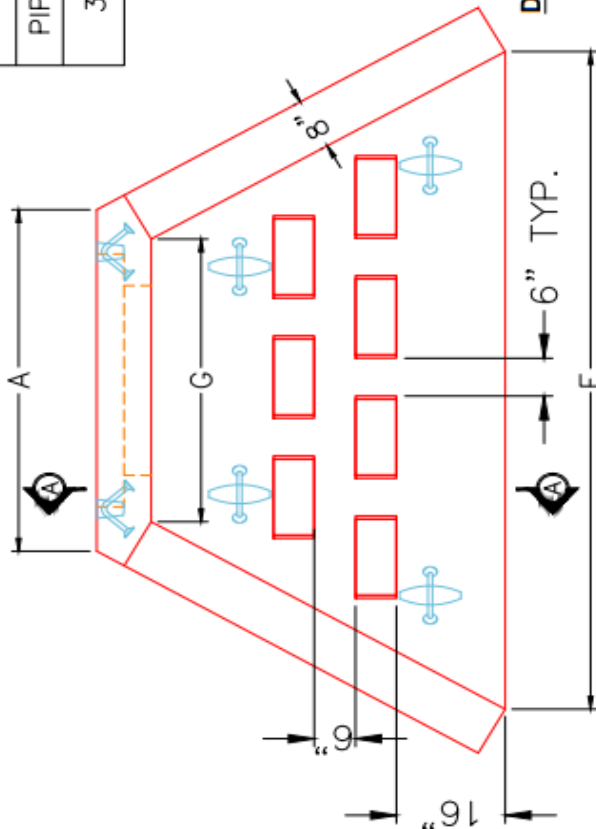
DIMENSIONS								
PIPE ϕ	A	B	C	D	E	F	G	WEIGHT
36"	4'-6"	4'-8"	4'-0"	1'-6"	5'-0"	8'-8"	3'-8"	8,015 LBS

GENERAL NOTES:

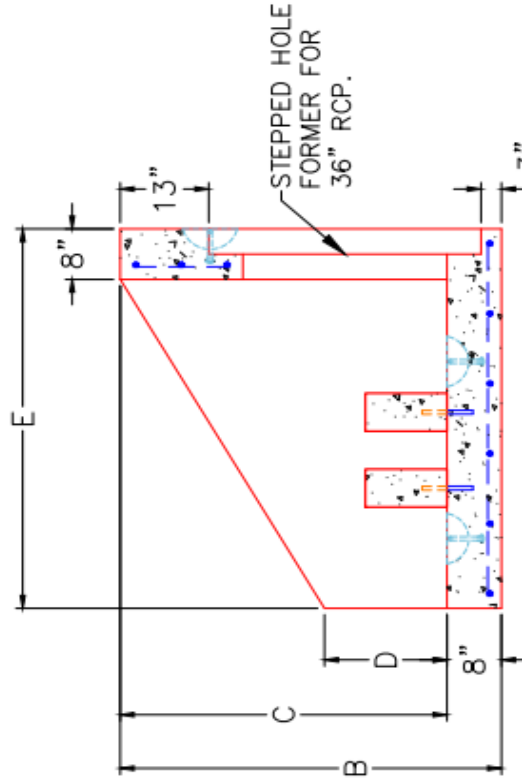
1. MANUFACTURED TO ASTM C-913 (LATEST REVISION).
2. CONCRETE: 5,000 PSI OR GREATER AT 28 DAYS.
3. REINFORCING: #5 BAR @ 12" C/C E.W. (GRADE 60).
4. WEIGHT: 8,015 LBS.
5. CONTRACTOR TO VERIFY ALL DIMENSIONS BEFORE MANUFACTURE.
6. ALL LIFT POINTS AND PIPE OPENINGS TO BE GROUTED BY CONTRACTOR.



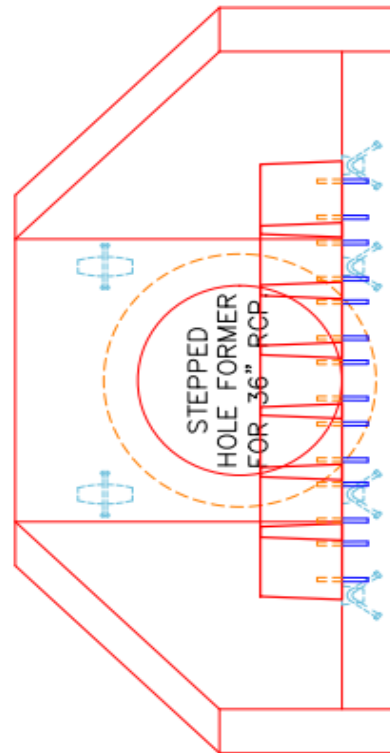
DISSIPATOR BLOCK DETAIL



PLAN VIEW



SECTION A-A



FRONT ELEVATION

SUBMITTAL DRAWING: 36" PC HW W/ FB & DISS.	
CUSTOMER: CLEARY CONSTRUCTION, INC	
PROJECT: WESTSIDE MARKETS OF GREENSBORO VILLAGE	
STRUCTURE: G0	
QUOTE/SALES ORDER NO: 26-1077	DRAWN BY: FMT
PC: C. GOFF	SCALE: NTS
DATE: 01/20/26	PG. 1 of 1



REVISION INFORMATION	
REV. Δ DATE:	NO REVISIONS TO DATE