

Job Name: 26-1077 - Westside Markets of Greensboro Village Job Location: Gallatin, TN Contractor: Cleary Construction, Inc.	Plant: 100	Tech: J. Horsley - F
	3/27/2026 4:34:51 PM	PC: C. Goff

Structure ID: C5

P2 MH048LD07S

MH FLAT TOP w/30"x36" Hole F/F

- P3) 30" x 36" - CASTING HEIGHT - 6.50"
- P2) 48" - MH FLAT TOP w/30"x36" Hole F/F - 7"
- P1) 48" - MH BASE Custom Ht F/n - 32"
- 1) 48" - STORM INVERT CHANNEL - 1/4 HEIGHT
- 1) 48" - Conseal CS-102 1.00"
- 2) Hole - 24
- 3) Hole - 6
- 3) MH Step ML-10-TDS-NCR - 10"

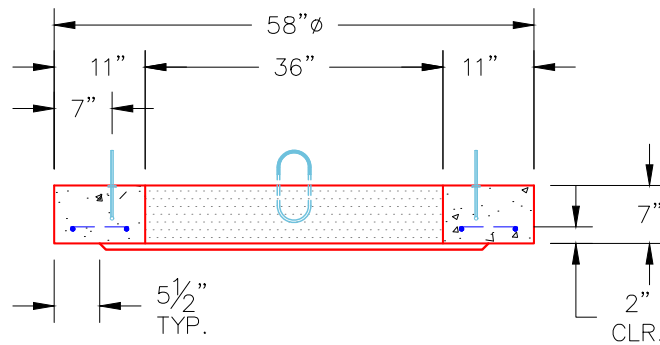
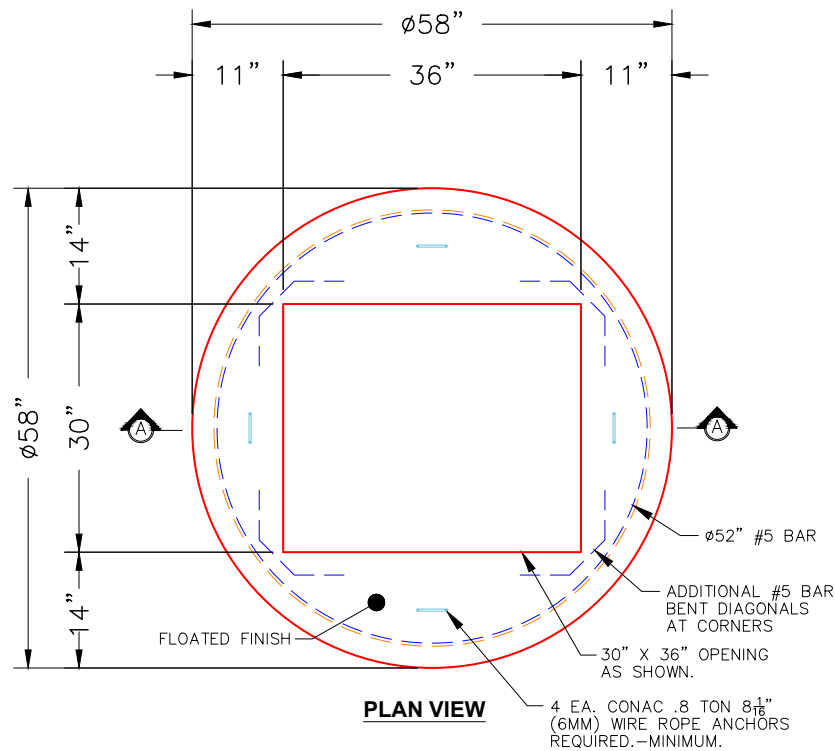
	0 lb
	916 lb
	3136 lb
	1075 lb
	0 lb
	0 lb
	0 lb
	0 lb
Structure Total:	5127 lb

Structure Notes:

- PER ASTM C478 SPECIFICATIONS.
- CONCRETE = 4,000 PSI AT 28 DAYS.
- CASTING SUPPLIED BY OTHERS (JBS 2064 F/G/H - SINGLE CURB INLET).

REINFORCING PER ASTM A615 (GRADE 60).

- TOP SLAB (As .62) #5 BARS AT 6" C.C.E.W..
- RISER/WALLS (As .12)
- FLOOR (As .31) #5 BARS AT 12" C.C.E.W.



- NOTES:**
- MANUFACTURED TO ASTM C-478 (LATEST REVISION).
 - CONCRETE: 4,000 PSI AT 28 DAYS.
 - REINFORCING: #5 BAR @ 6" O.C. E.W. (GRADE 60).

Coating (Int): Coating (Ext):	Seam Up: Flat Seam Dn: Flat	Wall Thickness: 5"	Height (Ext): 7"	Weight (Net): 916 lb Volume (Net): 0.23cu.yd
----------------------------------	--------------------------------	--------------------	------------------	---