

Job Name: 26-1077 - Westside Markets of Greensboro Village	Plant: 100	Tech: J. Horsley - F
Job Location: Gallatin, TN	3/27/2026 4:34:50 PM	PC: C. Goff
Contractor: Cleary Construction, Inc.		

Structure ID: C4

P2 MH048LD12ECC

MH FLAT TOP w/ 24" ECC Hole F/G

- P3) 24" - CASTING HEIGHT - 7"
- P2) 48" - MH FLAT TOP w/ 24" ECC Hole F/G - 12"
- P1) 48" - MH BASE T/n - 48"
- 1) 48" - STORM INVERT CHANNEL - 1/4 HEIGHT
- 1) 48" - Conseal CS-102 1.00"
- 3) Hole - 24
- 3) Hole - 6
- 4) MH Step ML-10-TDS-NCR - 10"

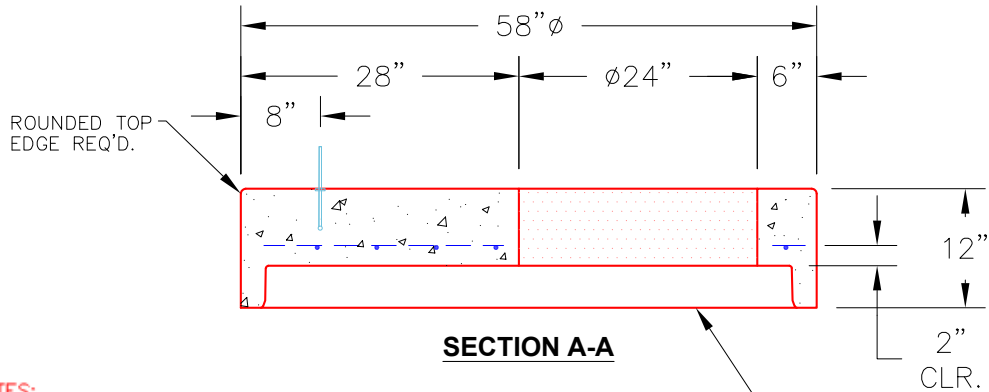
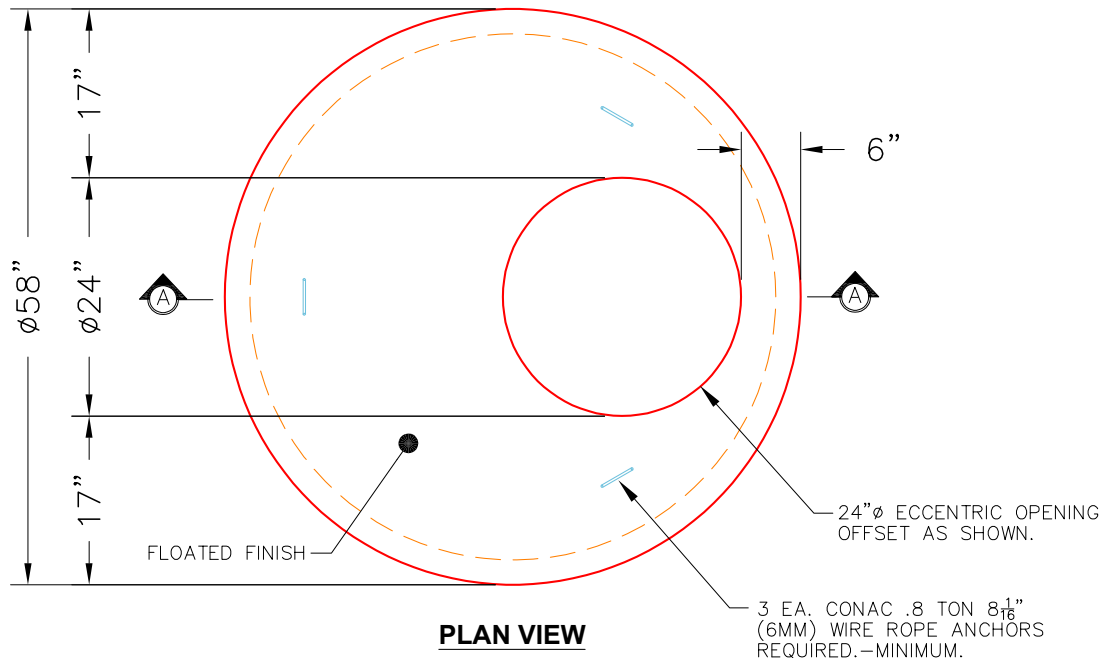
0 lb
1561 lb
4056 lb
1075 lb
0 lb
0 lb
0 lb
0 lb

6692 lb

Structure Total:

Structure Notes:
 1. PER ASTM C478 SPECIFICATIONS.
 2. CONCRETE = 4,000 PSI AT 28 DAYS.
 3. CASTING SUPPLIED BY OTHERS (JBS 1150 F/C STORM).

REINFORCING PER ASTM A615 (GRADE 60).
 - TOP SLAB (As .62) #5 BARS AT 6" C.C.E.W..
 - RISER/WALLS (As .12)
 - FLOOR (As .31) #5 BARS AT 12" C.C.E.W.



- NOTES:**
- 1. MANUFACTURED TO ASTM C-478 (LATEST REVISION).
 - 2. CONCRETE: 4,000 PSI AT 28 DAYS.
 - 3. REINFORCING: #5 BAR @ 6" O.C. E.W. (GRADE 60).

Coating (Int): Coating (Ext):	Seam Up: Flat Seam Dn: Groove	Wall Thickness: 5"	Height (Ext): 12"	Weight (Net): 1561 lb Volume (Net): 0.42cu.yd
----------------------------------	----------------------------------	--------------------	-------------------	--