

Job Name: 26-1077 - Westside Markets of Greensboro Village Job Location: Gallatin, TN Contractor: Cleary Construction, Inc.	Plant: 100	Tech: J. Horsley - F
	3/27/2026 4:34:49 PM	PC: C. Goff

**Structure ID: A10**

**P2 MH060LD08SP**

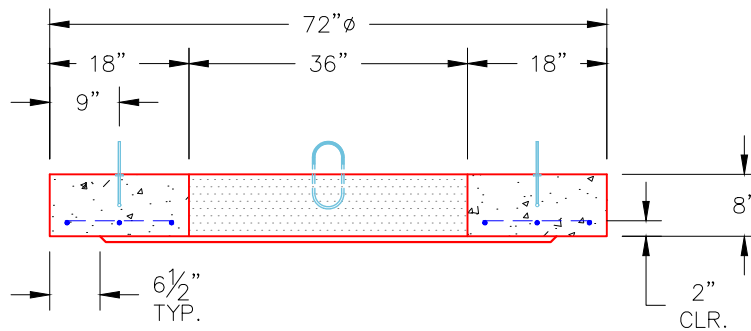
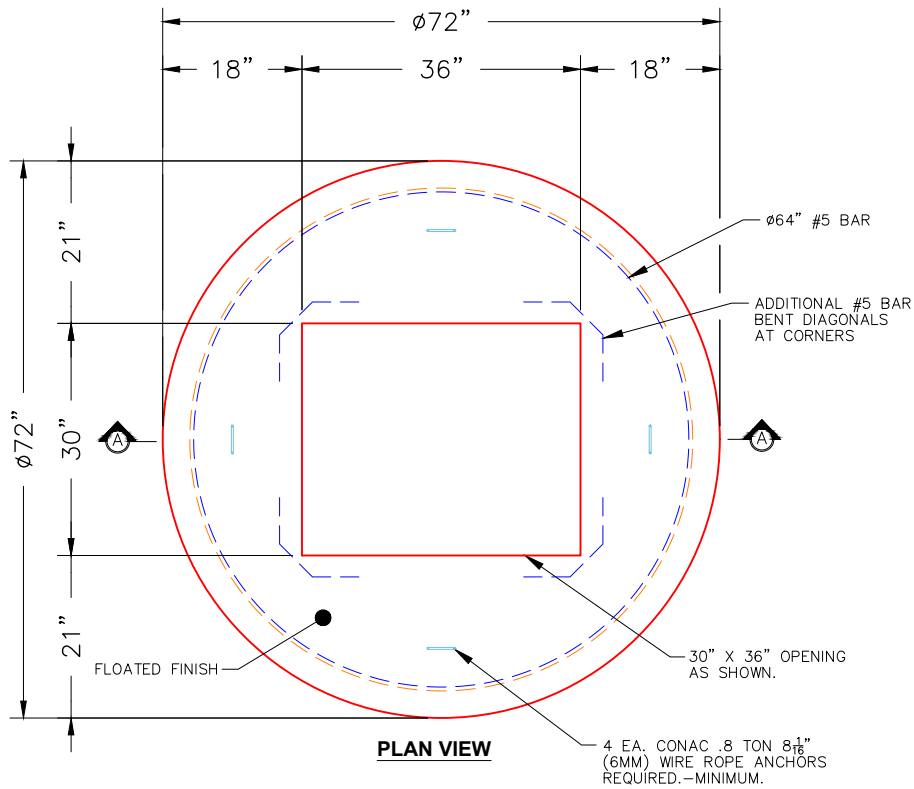
**MH FLAT TOP w/30"x36" Hole F/F**

- P3) 30" x 36" - CASTING HEIGHT - 6.50"
- P2) 60" - MH FLAT TOP w/30"x36" Hole F/F - 8"
- P1) 60" - MH BASE Custom Ht F/n - 50"
- 1) 60" - STORM INVERT CHANNEL - 1/4 HEIGHT
- 1) 60" - Conseal CS-102 1.00"
- 1) Hole - 30
- 2) Hole - 24
- 3) Hole - 6
- 4) MH Step ML-10-TDS-NCR - 10"

0 lb  
2008 lb  
7074 lb  
1700 lb  
0 lb  
0 lb  
0 lb  
0 lb  
0 lb  
-----  
Structure Total: 10782 lb

Structure Notes:  
1. PER ASTM C478 SPECIFICATIONS.  
2. CONCRETE = 4,000 PSI AT 28 DAYS.  
3. CASTING SUPPLIED BY OTHERS (JBS 2064 F/G/H - SINGLE CURB INLET).

REINFORCING PER ASTM A615 (GRADE 60).  
- TOP SLAB (As .62) #5 BARS AT 6" C.C.E.W..  
- RISER/WALLS (As .18)  
- FLOOR (As .37) #5 BARS AT 10" C.C.E.W.



- NOTES:
1. MANUFACTURED TO ASTM C-478 (LATEST REVISION).
  2. CONCRETE: 4,000 PSI AT 28 DAYS.
  3. REINFORCING: #5 BAR @ 6" O.C. E.W. (GRADE 60).

Coating (Int): Coating (Ext):	Seam Up: Flat Seam Dn: Flat	Wall Thickness: 6"	Height (Ext): 8"	Weight (Net): 2008 lb Volume (Net): 0.51cu.yd
----------------------------------	--------------------------------	--------------------	------------------	--