

Job Name: 26-1058 - Owensboro, KY - PO 121-031630
 Job Location: Owensboro, KY
 Contractor: Winwater Hartford KY Co.

Plant: Beaver Dam

Tech: J. Coppage

1/9/2026 7:44:03 AM

PC: A. Chambers



Structure ID: 2500 GAL GT

P1 CVBVF-CDARED

BOX BASE 6inW, 6inF, Variable Ht w/ConBlock-CDA Red

- P3) 24" - CASTING HEIGHT - 7"
- P2) 72" x 144" - CB FLAT TOP 6"W w/(2) 24" HOLES w/ ConBlock-CDA Red - 8"
- P1) 72" x 144" - BOX BASE 6inW, 6inF, Variable Ht w/ConBlock-CDA Red - 72"
- 1) SECONDARY POUR - WALLS
- 1) SECONDARY POUR - BAFFLE WALL
- 1) 72" x 144" - Conseal CS-102 1.00"
- 2) Kor-N-Seal1 - S106-8SRWS

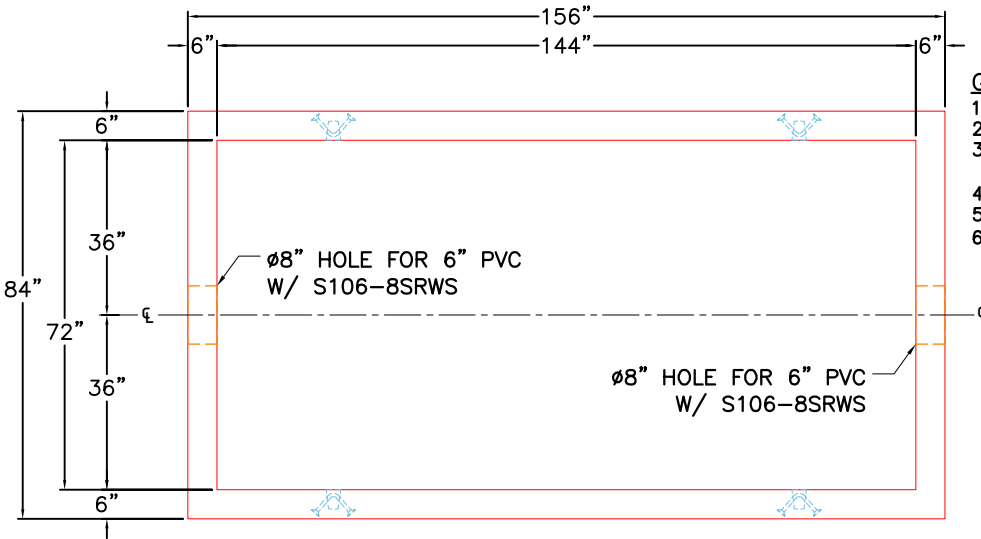
- Structure Notes:**
1. JR HOE MC-315 GREASE PROVIDED BY ICAST.
 2. PER ASTM C913 SPECIFICATIONS.
 3. CONCRETE = 4,500 PSI AT 28 DAYS.
 4. REINFORCING PER ASTM A615 (GRADE 60)
 - H-20 DESIGN LOADING
 - TOP SLAB (As .47) #5 BARS AT 6" C.C.E.W.
 - WALLS (As .47) #5 BARS AT 8" C.C.E.W.
 - FLOOR (As .47) #5 BARS AT 8" C.C.E.W.

Structure Total: 33765 lb

FIRST POUR DRAWING
FIRST POUR - 6,598 LBS.
SECOND POUR - 16,479 LBS.
THIRD POUR - 2,481 LBS.
TOTAL - 25,558 LBS.

Rim: 7.25' Rim to Invert: 2.58' Slack: 0" Sump: 56.04" Step Position:

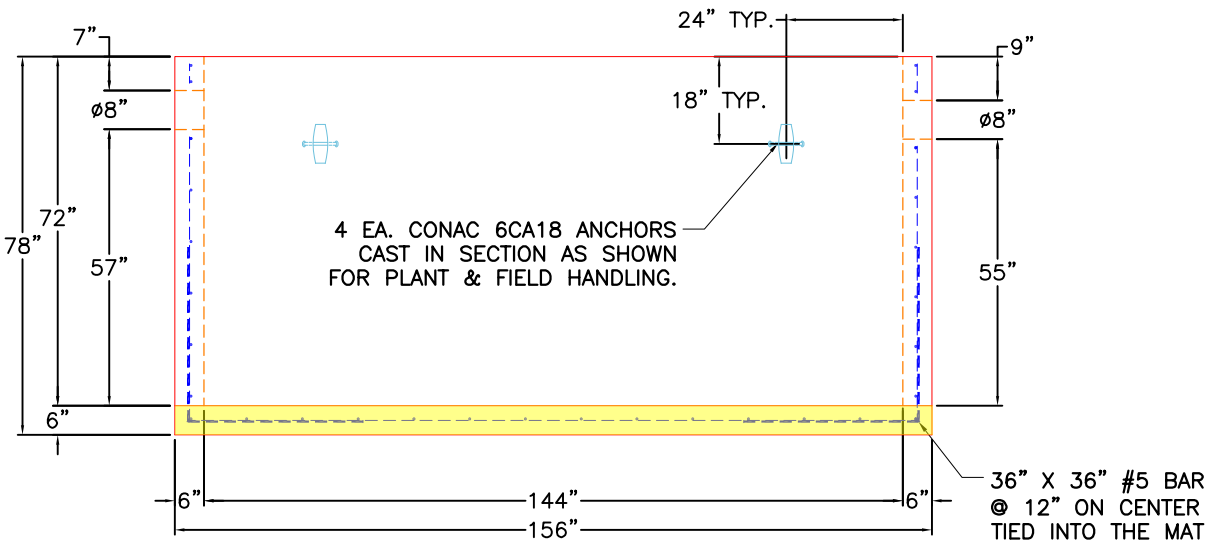
Position	Elev	Angle	Ext. (cw)	Pipe	Pipe OD	Connector	Hole	Horz Size	Up (L)	Offset
Invert 1	4.67'	0°	42"	6" PVC SDR35	6.25"	Kor-N-Seal1 S106-8SRWS	8"	8"	55.04"	0"
Invert 2	4.83'	180°	42"	6" PVC SDR35	6.25"	Kor-N-Seal1 S106-8SRWS	8"	8"	56.96"	0"



PLAN VIEW

GENERAL NOTES:

1. MANUFACTURED TO ASTM C-913 (LATEST REVISION).
2. CONCRETE: 4,500 PSI AT 28 DAYS.
3. REINFORCING: WALLS AND FLOOR #5 BAR @ 8" E.W. O.C. (GRADE 60).
4. WEIGHTS: TOTAL = 25,558 LBS
5. ICAST TO PROVIDE 2X TRB S106-8SRWS BOOTS
6. JOINT SEALANT TO BE CONSEAL CS-102, 1".



FRONT VIEW

Coating (Int): Coating (Ext):	Seam Up: Flat Seam Dn: n/a	Wall Thickness: 6" Floor Height: 6"	Height (Int): 72" Height (Ext): 78"	Weight (Net): 23077 lb Volume (Net): 5.89cu.yd
----------------------------------	-------------------------------	--	--	---

Job Name: 26-1058 - Owensboro, KY - PO 121-031630
 Job Location: Owensboro, KY
 Contractor: Winwater Hartford KY Co.

Plant: Beaver Dam

Tech: J. Coppage

1/9/2026 7:44:03 AM

PC: A. Chambers



Structure ID: 2500 GAL GT

P1 CVBVF-CDARED

BOX BASE 6inW, 6inF, Variable Ht w/ConBlock-CDA Red

- P3) 24" - CASTING HEIGHT - 7"
- P2) 72" x 144" - CB FLAT TOP 6"W w/(2) 24" HOLES w/ ConBlock-CDA Red - 8"
- P1) 72" x 144" - BOX BASE 6inW, 6inF, Variable Ht w/ConBlock-CDA Red - 72"
- 1) SECONDARY POUR - WALLS
- 1) SECONDARY POUR - BAFFLE WALL
- 1) 72" x 144" - Conseal CS-102 1.00"
- 2) Kor-N-Seal1 - S106-8SRWS

- Structure Notes:**
1. JR HOE MC-315 GREASE PROVIDED BY ICAST.
 2. PER ASTM C913 SPECIFICATIONS.
 3. CONCRETE = 4,500 PSI AT 28 DAYS.
 4. REINFORCING PER ASTM A615 (GRADE 60)
 - H-20 DESIGN LOADING
 - TOP SLAB (As .47) #5 BARS AT 6" C.C.E.W.
 - WALLS (As .47) #5 BARS AT 8" C.C.E.W.
 - FLOOR (As .47) #5 BARS AT 8" C.C.E.W.

SECOND POUR DRAWING

FIRST POUR - 6,598 LBS.

SECOND POUR - 16,479 LBS.

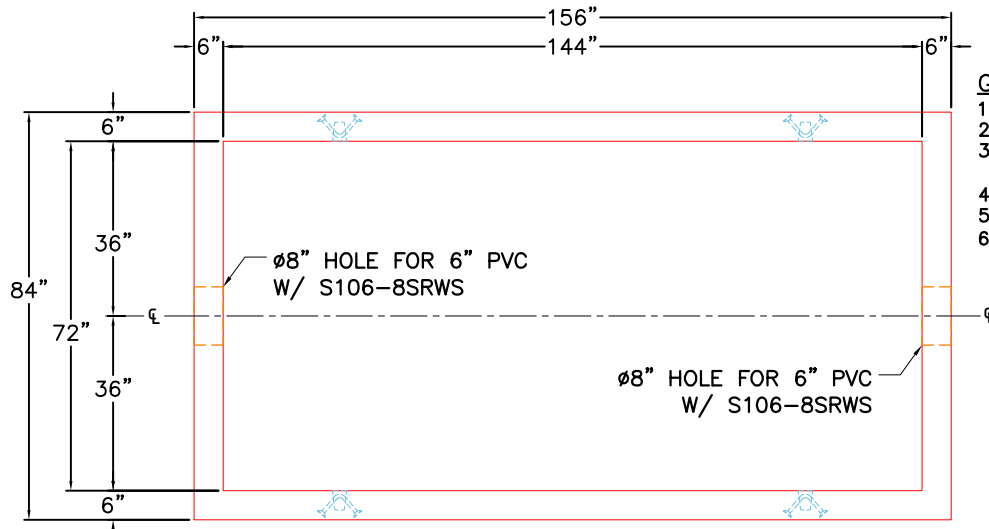
THIRD POUR - 2,481 LBS.

TOTAL - 25,558 LBS.

Structure Total: 33765 lb

Rim: 7.25' Rim to Invert: 2.58' Slack: 0" Sump: 56.04" Step Position:

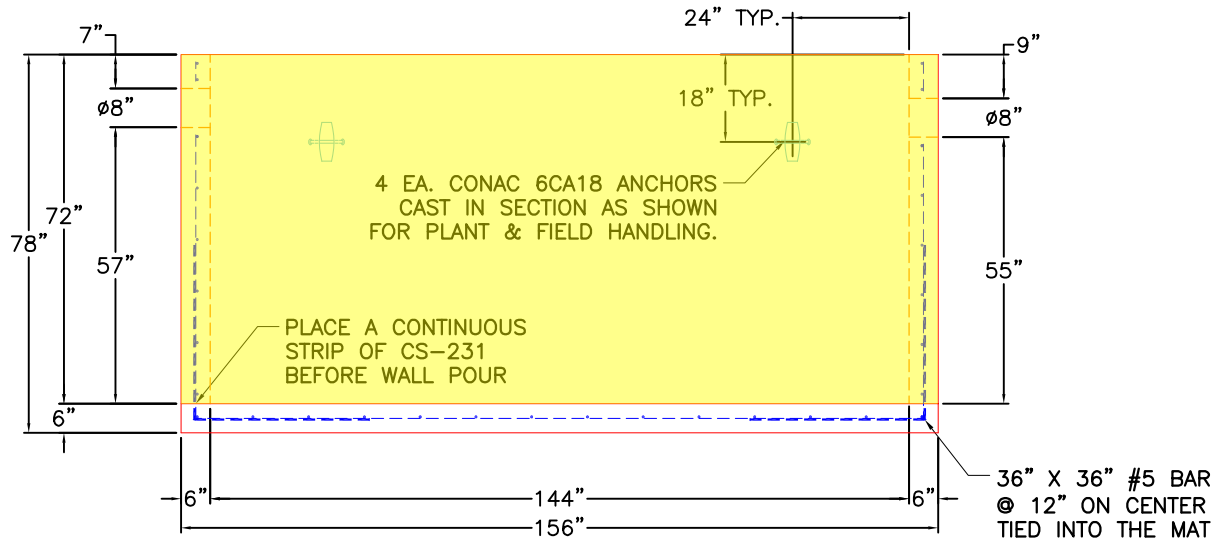
Position	Elev	Angle	Ext. (cw)	Pipe	Pipe OD	Connector	Hole	Horz Size	Up (L)	Offset
Invert 1	4.67'	0°	42"	6" PVC SDR35	6.25"	Kor-N-Seal1 S106-8SRWS	8"	8"	55.04"	0"
Invert 2	4.83'	180°	42"	6" PVC SDR35	6.25"	Kor-N-Seal1 S106-8SRWS	8"	8"	56.96"	0"



PLAN VIEW

GENERAL NOTES:

1. MANUFACTURED TO ASTM C-913 (LATEST REVISION).
2. CONCRETE: 4,500 PSI AT 28 DAYS.
3. REINFORCING: WALLS AND FLOOR #5 BAR @ 8" E.W. O.C. (GRADE 60).
4. WEIGHTS: TOTAL = 25,558 LBS
5. ICAST TO PROVIDE 2X TRB S106-8SRWS BOOTS
6. JOINT SEALANT TO BE CONSEAL CS-102, 1".



FRONT VIEW

Coating (Int): Coating (Ext):	Seam Up: Flat Seam Dn: n/a	Wall Thickness: 6" Floor Height: 6"	Height (Int): 72" Height (Ext): 78"	Weight (Net): 23077 lb Volume (Net): 5.89cu.yd
----------------------------------	-------------------------------	--	--	---

Job Name: 26-1058 - Owensboro, KY - PO 121-031630
 Job Location: Owensboro, KY
 Contractor: Winwater Hartford KY Co.

Plant: Beaver Dam
 1/9/2026 7:44:03 AM

Tech: J. Coppage
 PC: A. Chambers



Structure ID: 2500 GAL GT

P1 CVBVF-CDARED

BOX BASE 6inW, 6inF, Variable Ht w/ConBlock-CDA Red

- P3) 24" - CASTING HEIGHT - 7"
- P2) 72" x 144" - CB FLAT TOP 6"W w/(2) 24" HOLES w/ ConBlock-CDA Red - 8"
- P1) 72" x 144" - BOX BASE 6inW, 6inF, Variable Ht w/ConBlock-CDA Red - 72"
- 1) SECONDARY POUR - WALLS
- 1) SECONDARY POUR - BAFFLE WALL
- 1) 72" x 144" - Conseal CS-102 1.00"
- 2) Kor-N-Seal1 - S106-8SRWS

0 lb
 8194 lb
 23077 lb
 0 lb
 2481 lb
 0 lb
 13 lb

 Structure Total: 33765 lb

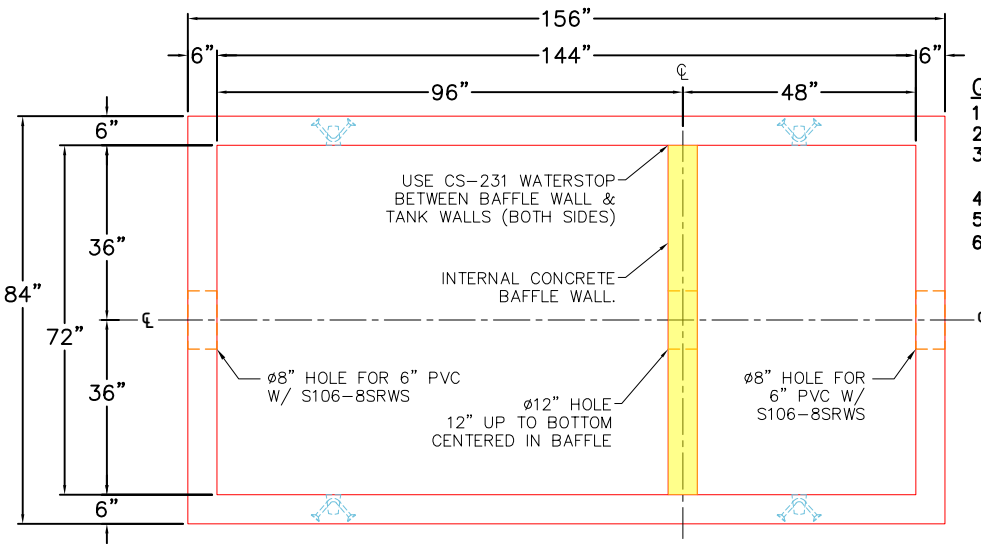
- Structure Notes:**
1. JR HOE MC-315 GREASE PROVIDED BY ICAST.
 2. PER ASTM C913 SPECIFICATIONS.
 3. CONCRETE = 4,500 PSI AT 28 DAYS.
 4. REINFORCING PER ASTM A615 (GRADE 60)
 H-20 DESIGN LOADING
 - TOP SLAB (As .47) #5 BARS AT 6" C.C.E.W.
 - WALLS (As .47) #5 BARS AT 8" C.C.E.W.
 - FLOOR (As .47) #5 BARS AT 8" C.C.E.W.

THIRD POUR DRAWING

FIRST POUR - 6,598 LBS.
 SECOND POUR - 16,479 LBS.
THIRD POUR - 2,481 LBS.
 TOTAL - 25,558 LBS.

Rim: 7.25' Rim to Invert: 2.58' Slack: 0" Sump: 56.04" Step Position:

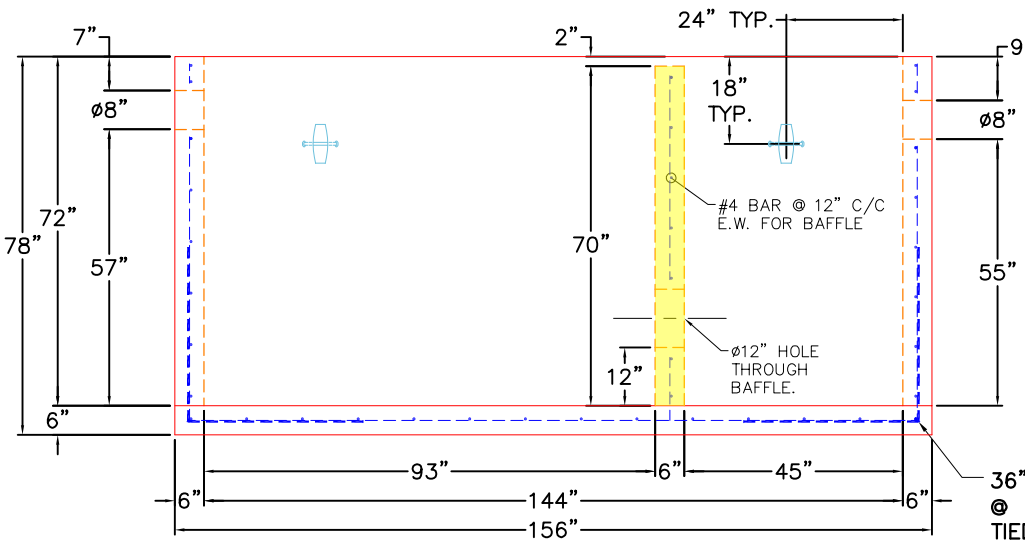
Position	Elev	Angle	Ext. (cw)	Pipe	Pipe OD	Connector	Hole	Horz Size	Up (L)	Offset
Invert 1	4.67'	0°	42"	6" PVC SDR35	6.25"	Kor-N-Seal1 S106-8SRWS	8"	8"	55.04"	0"
Invert 2	4.83'	180°	42"	6" PVC SDR35	6.25"	Kor-N-Seal1 S106-8SRWS	8"	8"	56.96"	0"



PLAN VIEW

GENERAL NOTES:

1. MANUFACTURED TO ASTM C-913 (LATEST REVISION).
2. CONCRETE: 4,500 PSI AT 28 DAYS.
3. REINFORCING: WALLS AND FLOOR #5 BAR @ 8" E.W. O.C. (GRADE 60).
4. WEIGHTS: TOTAL = 25,558 LBS
5. ICAST TO PROVIDE 2X TRB S106-8SRWS BOOTS
6. JOINT SEALANT TO BE CONSEAL CS-102, 1".



FRONT VIEW

36" X 36" #5 BAR @ 12" ON CENTER TIED INTO THE MAT

Coating (Int): Coating (Ext):	Seam Up: Flat Seam Dn: n/a	Wall Thickness: 6" Floor Height: 6"	Height (Int): 72" Height (Ext): 78"	Weight (Net): 23077 lb Volume (Net): 5.89cu.yd
----------------------------------	-------------------------------	--	--	---