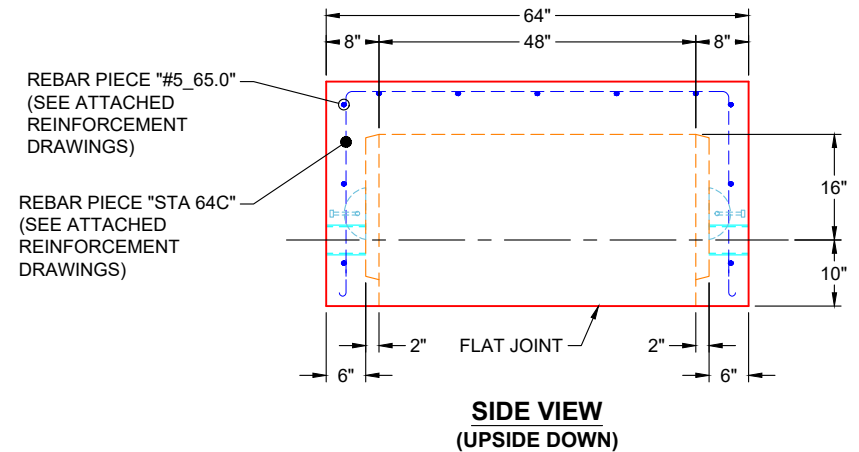
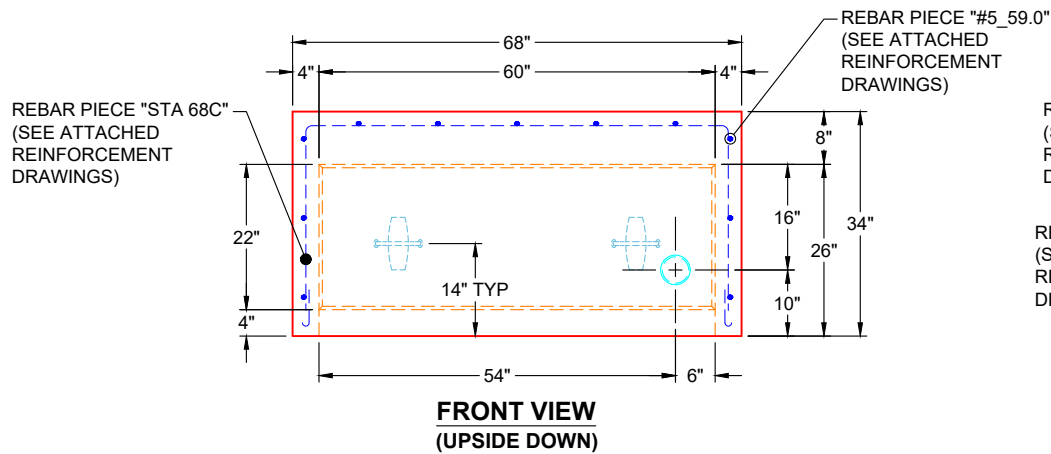


GENERAL NOTES:

1. MANUFACTURED TO ASTM C-913 (LATEST REVISION)
2. CONCRETE: 5,000 PSI AT 28 DAYS
3. REINFORCEMENT: PER ATTACHED REINFORCEMENT DRAWINGS - MIN. 1½" REBAR CLEARANCE
4. WEIGHT: 5,890 LBS



PRODUCTION WORK ORDER

PRODUCT I.D.: BX4860-04W08F-BAVF

DESCRIPTION: 48" X 60" X 26" VAULT BASE



QUALITY CONTROL CHECKLIST

- ALL DIMENSIONS CORRECT.
- LIFTERS INSTALLED.
- HOLE LOCATION(S) CORRECT.
- REINFORCING CORRECT.
- SURFACE QUALITY ACCEPTABLE.
- EDGES CHAMFERED.
- ALL PATCHWORK ACCEPTABLE.

PRODUCT VIEW: UPSIDE DOWN

CUSTOMER: ENDESOL, INC.

PLANT: BEAVER DAM, KY

PROJECT: VSG 3-26

WEIGHT: 5,890 LBS

STRUCTURE: 61043 (3)

TOP SECTION JOINT: FLAT

ORDER NO: 26-1043

BASE SECTION JOINT: N / A

PE: J.H. ROSS

DRAWING: K. CARDWELL

QC CHECK INITIALS:

DATE: 01/20/26

SCALE: NTS

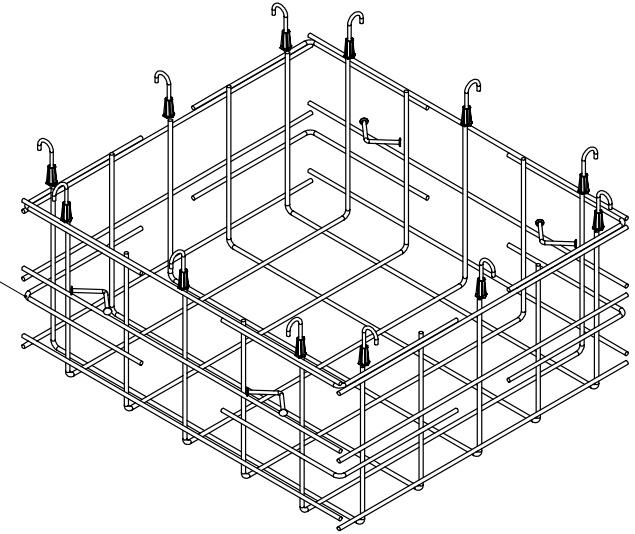
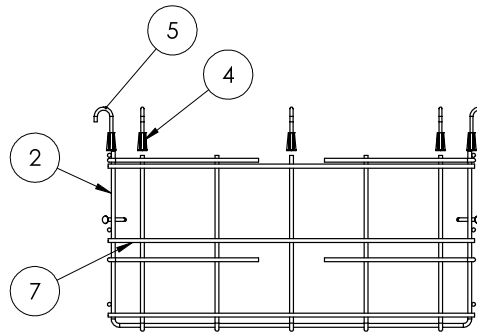
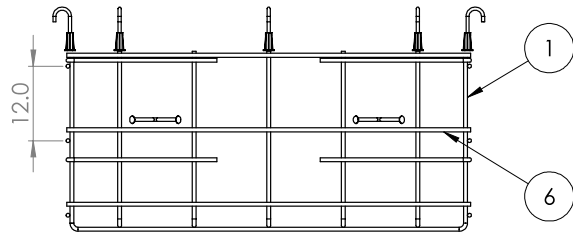
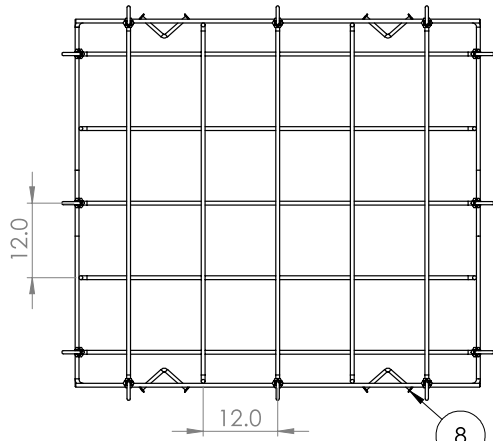
PG. 1 OF 1

4

3

2

1



ITEM NO.	PART NUMBER	DESCRIPTION	QTY.
1	STA 68C	#5 Rebar C Shape	5
2	STA 64C	#5 Rebar C Shape	5
3	STA 2424L	#5 Rebar L 24" x 24"	8
4	TSI 50x278	Threaded Anchor	12
5	J Bolt 42117	#4 Rebar J	12
6	#5_65.0	#5 Rebar 65" Long	6
7	#5_59.0	#5 Rebar 59" Long	6
8	LUL514G	Lift Hook	4

NOTES:

- 1. Rebar: #5 A614 Grade 60
- 2. All Rebar to have 1.5" Cover Minimum

PROPRIETARY AND CONFIDENTIAL
 THE INFORMATION CONTAINED IN THIS DRAWING IS THE SOLE PROPERTY OF ENDESOL INC. ANY REPRODUCTION IN PART OR AS A WHOLE WITHOUT THE WRITTEN PERMISSION OF ENDESOL INC. IS PROHIBITED.

		UNLESS OTHERWISE SPECIFIED:	NAME	DATE	<h1>ENDESOL</h1> <p>TITLE: EFX-60 Stationary Rebar Detail</p> <p>SIZE B DWG. NO. EFX-60 STA Rebar REV X2</p> <p>SCALE: 1:20 WEIGHT: SHEET 1 OF 1</p>	
		DIMENSIONS ARE IN INCHES	DRAWN	CMJ		3-25-16
		TOLERANCES:	CHECKED	JHR		3-25-16
		FRACTIONAL 1/8"	ENG APPR.	XXXX		XXXX
		TWO PLACE DECIMAL .13	MFG APPR.	XXXX		XXXX
		THREE PLACE DECIMAL .125	Q. A.	XXXX	XXXX	
		INTERPRET GEOMETRIC TOLERANCING PER:	COMMENTS:			
		MATERIAL	#5 REBAR			
		FINISH	MILL			
NEXT ASSY	USED ON	APPLICATION	DO NOT SCALE DRAWING			

4

3

2

1

B

B

A

A

Job Number:

26-1043

Job Name:

VSG 3-26

Structure:

61043 (3)

Note:

Nosing Kit To Be Shipped. See Chad Jarvis.

Job Number:

26-1043

Job Name:

VSG 3-26

Structure:

61043 (3)

Note:

2 Each 4" PVC Terminals Supplied
By iCast To Be Cast Into Walls As
Shown On Production Drawing