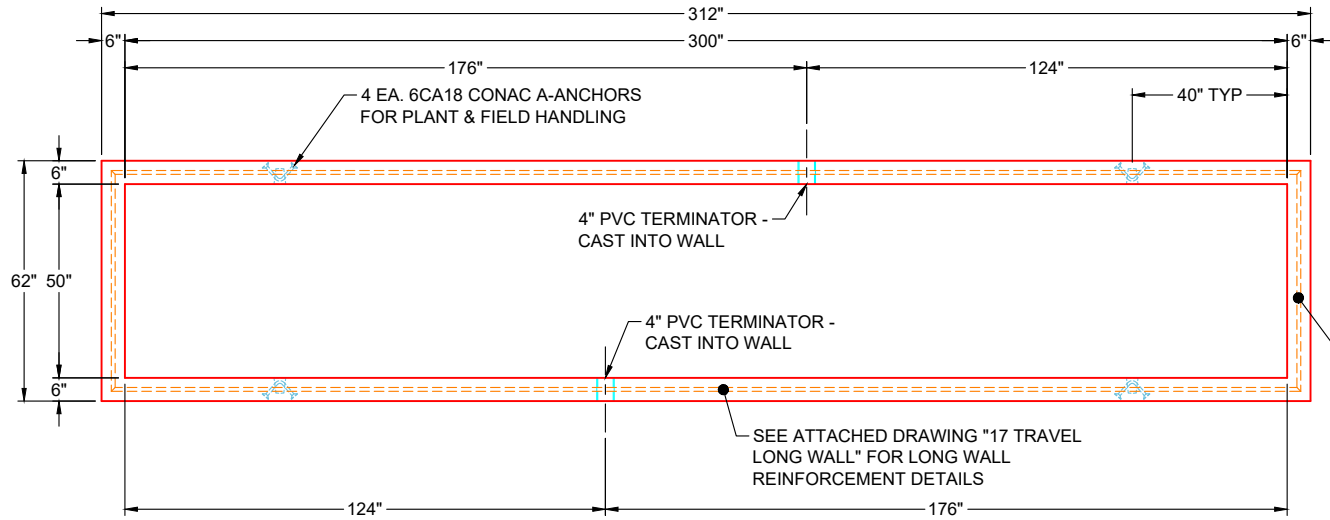
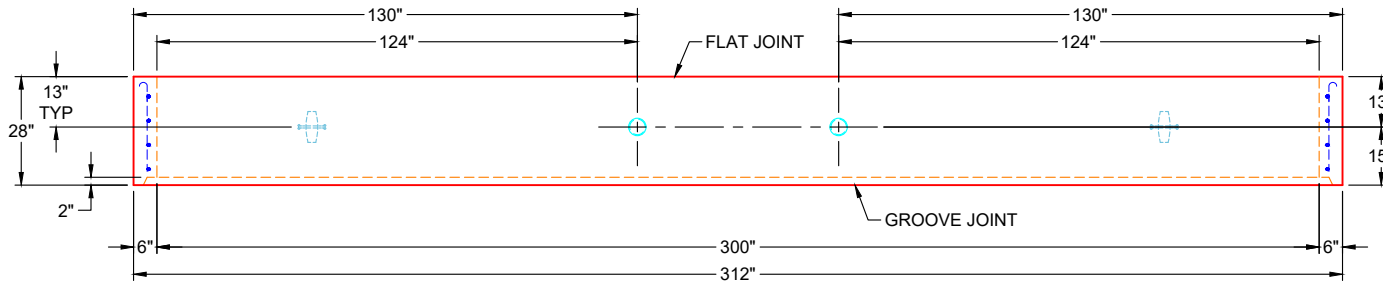


**GENERAL NOTES:**

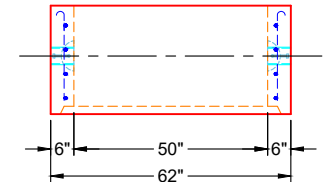
1. MANUFACTURED TO ASTM C-913 (LATEST REVISION)
2. CONCRETE: 5,000 PSI AT 28 DAYS
3. REINFORCEMENT - MIN. 1½" REBAR CLEARANCE:  
 - LONG WALLS:  
 PER ATTACHED DRAWING "17 TRAVEL REBAR LAYOUT"  
 - SHORT WALLS:  
 PER ATTACHED DRAWING "SHORT WALL"
4. WEIGHT: 10,194 LBS




**PLAN VIEW  
(RIGHT SIDE UP)**



**FRONT VIEW  
(RIGHT SIDE UP)**



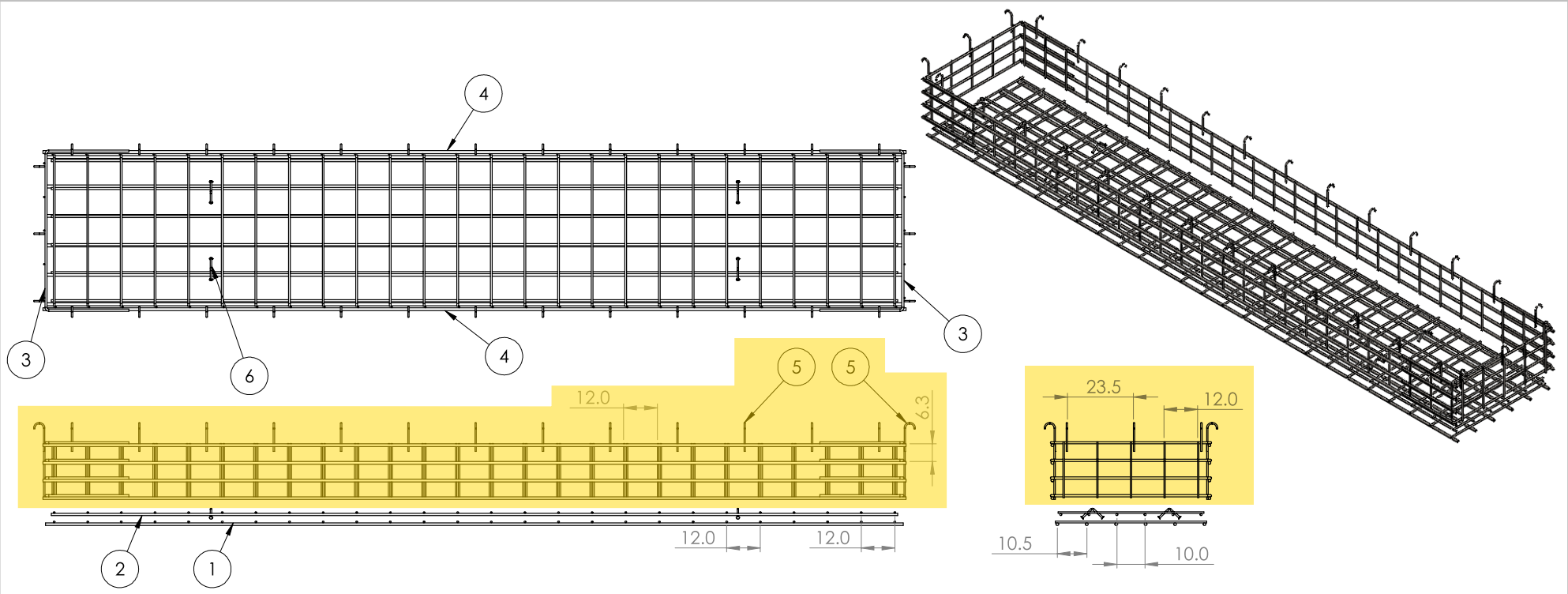
**SIDE VIEW  
(RIGHT SIDE UP)**

<b>PRODUCTION WORK ORDER</b>		PRODUCT I.D.: CVR	DESCRIPTION: 50" X 300" X 28" RISER	
	<b>QUALITY CONTROL CHECKLIST</b>		PRODUCT VIEW: UPSIDE DOWN	
	<input type="checkbox"/> ALL DIMENSIONS CORRECT. <input type="checkbox"/> LIFTERS INSTALLED. <input type="checkbox"/> HOLE LOCATION(S) CORRECT. <input type="checkbox"/> REINFORCING CORRECT. <input type="checkbox"/> SURFACE QUALITY ACCEPTABLE. <input type="checkbox"/> EDGES CHAMFERED. <input type="checkbox"/> GROOVE JOINT INSTALLED.		CUSTOMER: ENDESOL, INC.	
			PLANT: BEAVER DAM, KY	
			PROJECT: VSG 3-26	
			WEIGHT: 10,194 LBS	
			STRUCTURE: 61043 (1)	
		TOP SECTION JOINT: FLAT		
		ORDER NO: 26-1043		
		BASE SECTION JOINT: GROOVE		
		PE: J.H. ROSS		
		DRAWING: K. CARDWELL		
		QC CHECK INITIALS:		
		DATE: 01/20/26		
		SCALE: NTS		
		PG. 1 OF 1		

4 3 2 1

B

B



ITEM NO.	PART NUMBER	Qty.
1	17 Travel Base Bottom Mat	1
2	17 Travel Base Top Mat	1
3	Short Wall	2
4	17 Travel Long Wall	2
5	#4 0904J	32
6	6CA18 Lift Hooks	8

- NOTES:
1. Rebar: #5, #6, #8 A614 Grade 60
  2. All Rebar to have 1.5" Cover Minimum

A

A

**PROPRIETARY AND CONFIDENTIAL**  
 THE INFORMATION CONTAINED IN THIS DRAWING IS THE SOLE PROPERTY OF ENDESOL INC. ANY REPRODUCTION IN PART OR AS A WHOLE WITHOUT THE WRITTEN PERMISSION OF ENDESOL INC. IS PROHIBITED.

UNLESS OTHERWISE SPECIFIED:		NAME	DATE	<b>TITLE:</b> 17 Travel Base and Riser Rebar Layout	
DIMENSIONS ARE IN INCHES		DRAWN	CMJ		3-25-16
TOLERANCES:		CHECKED	JHR		3-25-16
FRACTIONAL ± 1/8"		ENG APPR.	XXXX		XXXX
TWO PLACE DECIMAL ±.13		MFG APPR.	XXXX		XXXX
THREE PLACE DECIMAL ±.125		Q. A.	XXXX	XXXX	
INTERPRET GEOMETRIC TOLERANCING PER:		COMMENTS:			
MATERIAL		Rebar A614 G60			
FINISH		MILL			
NEXT ASSY	USED ON	APPLICATION			
		DO NOT SCALE DRAWING			
SIZE	DWG. NO.	REV			
<b>B</b>	17 Travel Base and Riser Rebar Layout	<b>X1</b>			
SCALE: 1:50	WEIGHT:	SHEET 1 OF 1			

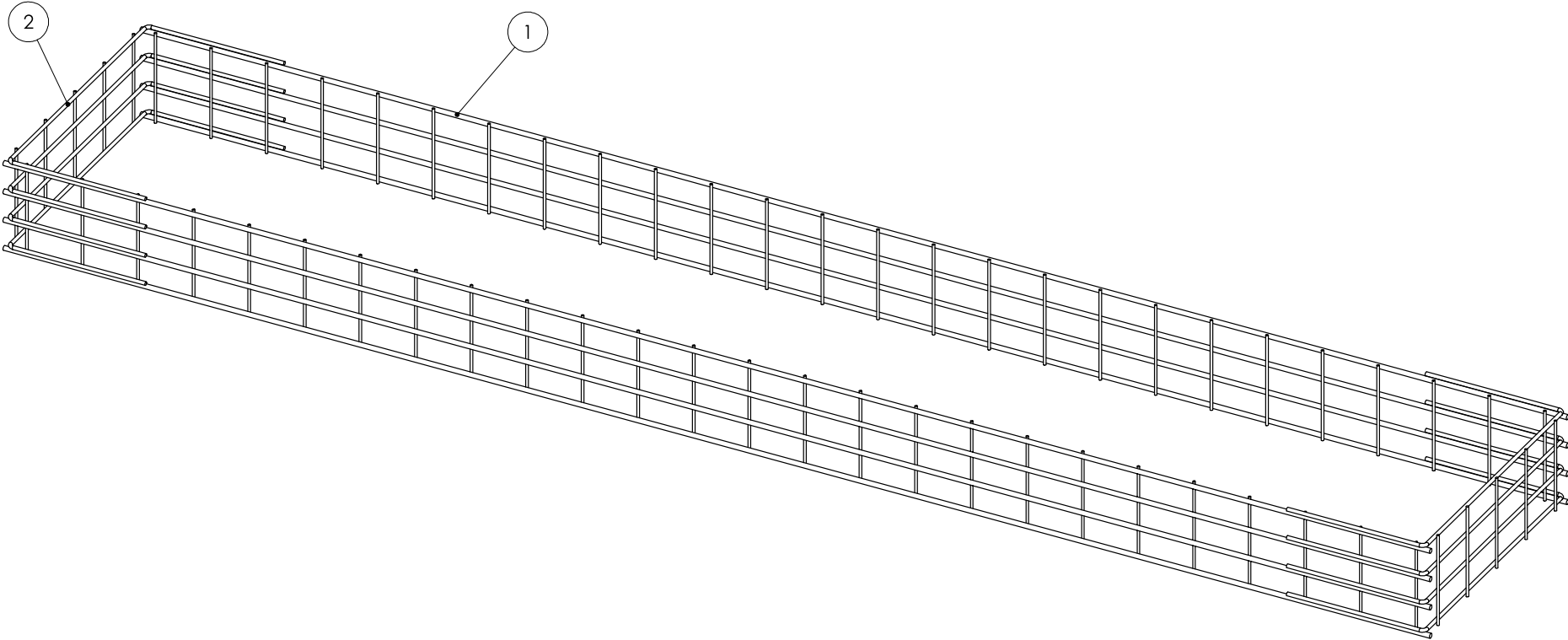
4 3 2 1

4

3

2

1



ITEM NO.	PART NUMBER	QTY.
1	17 Travel Long Wall	2
2	Short Wall	2

UNLESS OTHERWISE SPECIFIED: DIMENSIONS ARE IN INCHES TOLERANCES: FRACTIONAL: ± ANGULAR: MACH ± BEND ± TWO PLACE DECIMAL ± THREE PLACE DECIMAL ±  INTERPRET GEOMETRIC TOLERANCING PER: MATERIAL  FINISH  DO NOT SCALE DRAWING	DRAWN	CHECKED	DATE	REV
	CMJ	JHR	1/4/2016	
<b>PROPRIETARY AND CONFIDENTIAL</b>		TITLE:		
THE INFORMATION CONTAINED IN THIS DRAWING IS THE SOLE PROPERTY OF ICAST, INC. ANY REPRODUCTION IN PART OR AS A WHOLE WITHOUT THE WRITTEN PERMISSION OF ICAST, INC. IS PROHIBITED.		17 Travel Rebar Layout		
SCALE: N/A WEIGHT:		SHEET 1 OF 1		



Infrastructure Precast, Inc.  
981 W 7th Street  
Beaver Dam, KY 42320  
icastinc.com  
270-363-2234

4

3

2

1

A

A

B

B

4

3

2

1

308.00

4.00

12.00

12.00

19.00

20.00

1

2

ITEM NO.	PART NUMBER	DESCRIPTION	QTY.
1	_8_308_0	#8 Rebar 308" Long	4
2	#5_20.0	#5 Rebar 20" Long	26

UNLESS OTHERWISE SPECIFIED:	DRAWN	CHECKED	DATE	REV
DIMENSIONS ARE IN INCHES	CMJ	JHR	1/6/2026	
TOLERANCES:				
FRACTIONAL: ±				
ANGULAR: MACH ± BEND ±				
TWO PLACE DECIMAL ±				
THREE PLACE DECIMAL ±				
INTERPRET GEOMETRIC TOLERANCING PER:	<b>PROPRIETARY AND CONFIDENTIAL</b>			
MATERIAL	THE INFORMATION CONTAINED IN THIS DRAWING IS THE SOLE PROPERTY OF ICAST, INC. ANY REPRODUCTION IN PART OR AS A WHOLE WITHOUT THE WRITTEN PERMISSION OF ICAST, INC. IS PROHIBITED.			
FINISH	TITLE: 17 Travel Long Wall			
DO NOT SCALE DRAWING	SCALE: N/A WEIGHT:			SHEET 1 OF 1



Infrastructure Precast, Inc.  
 981 W 7th Street  
 Beaver Dam, KY 42320  
 icastrc.com  
 270-363-2234

4

3

2

1

B

B

A

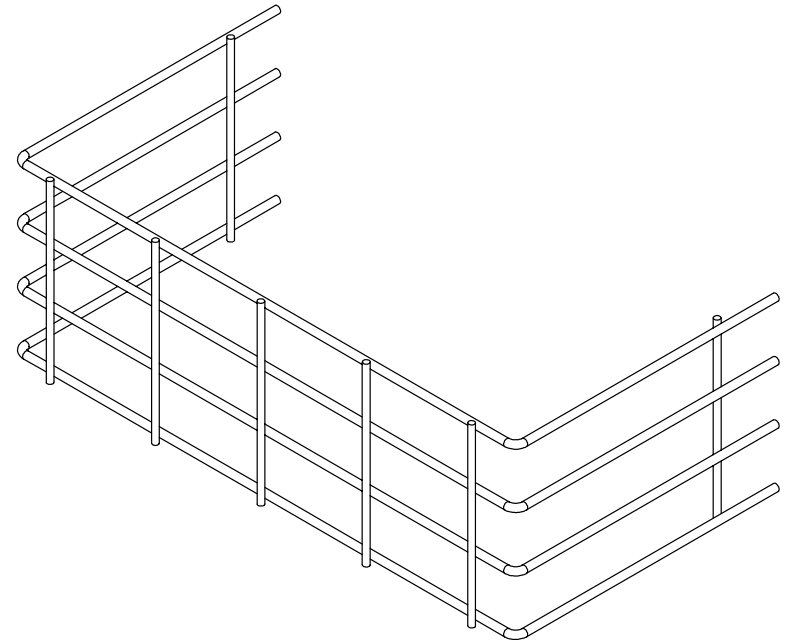
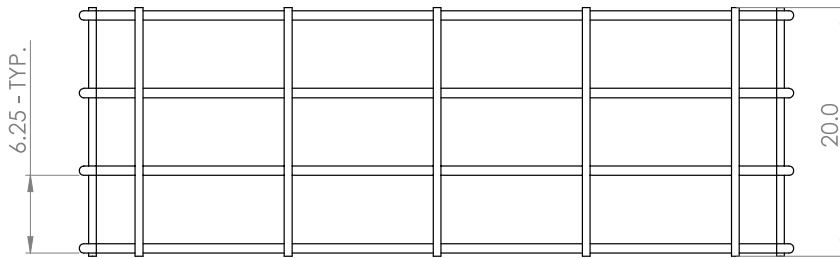
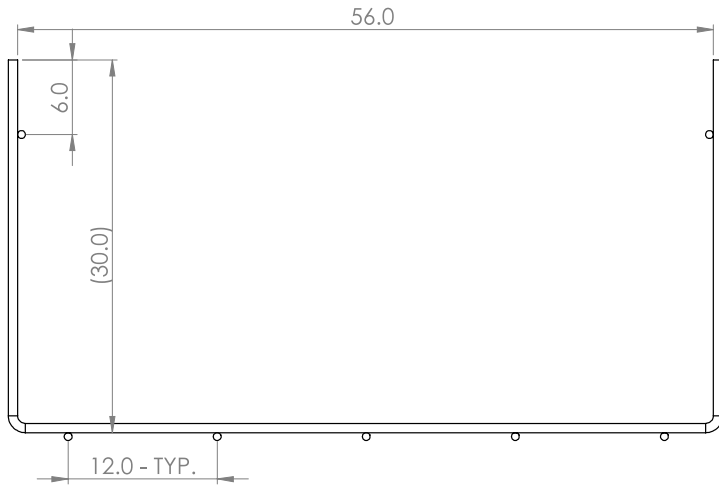
A

4

3

2

1



ITEM NO.	PART NUMBER	DESCRIPTION	QTY.
1	6CA18	#6 Formed Rebar C	4
2	#5_20.0	#5 Rebar 20" Long	7



981 W. 7th Street  
 Beaver Dam, KY  
 42320  
 P 270-363-2238  
 F 270-363-2234  
 iCastInc.com

DIMENSIONS ARE IN INCHES  
 TOLERANCES:  
 FRACTIONAL ±  
 ANGULAR: MACH ± BEND ±  
 TWO PLACE DECIMAL ±  
 THREE PLACE DECIMAL ±

MATERIAL

FINISH

DO NOT SCALE DRAWING

	NAME	DATE
DRAWN	xxx	
CHECKED		
ENG APPR.		
MFG APPR.		
Q.A.		
COMMENTS:		

**PROPRIETARY AND CONFIDENTIAL**  
 THE INFORMATION CONTAINED IN THIS DRAWING IS THE SOLE PROPERTY OF  
 INFRASTRUCTURE PRECAST INC. (iCAST). ANY REPRODUCTION IN PART OR  
 AS A WHOLE WITHOUT THE WRITTEN PERMISSION OF iCAST IS PROHIBITED.

SIZE	DWG. NO.	REV.
B	Short Wall	
SCALE: 1:10	WEIGHT:	SHEET 1 OF 1

4

3

2

1

B

B

A

A

**Job Number:**

26-1043

**Job Name:**

VSG 3-26

**Structure:**

61043 (1)

**Note:**

Nosing Kit To Be Shipped. See Chad Jarvis.

**Job Number:**

26-1043

**Job Name:**

VSG 3-26

**Structure:**

61043 (1)

**Note:**

2 Each 4" PVC Terminals Supplied  
By iCast To Be Cast Into Walls As  
Shown On Production Drawing