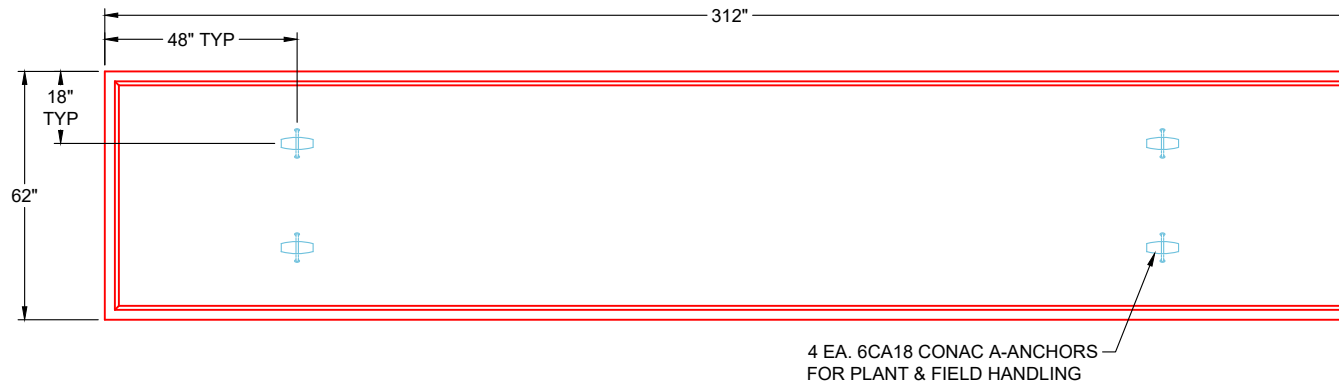
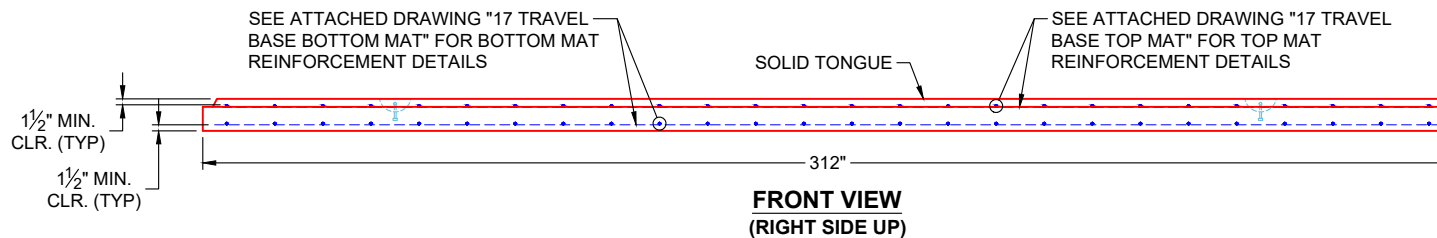


GENERAL NOTES:

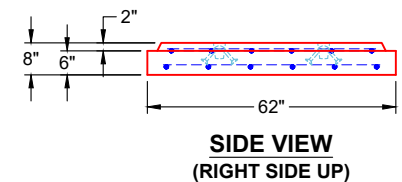
1. MANUFACTURED TO ASTM C-913 (LATEST REVISION)
2. CONCRETE: 5,000 PSI AT 28 DAYS
3. REINFORCEMENT - MIN. 1½" REBAR CLEARANCE:
 - TOP MAT:
 PER ATTACHED DRAWING "17 TRAVEL BASE TOP MAT"
 - BOTTOM MAT:
 PER ATTACHED DRAWING "17 TRAVEL BASE BOTTOM MAT"
4. WEIGHT: 15,920 LBS




**PLAN VIEW
(RIGHT SIDE UP)**



**FRONT VIEW
(RIGHT SIDE UP)**



**SIDE VIEW
(RIGHT SIDE UP)**

PRODUCTION WORK ORDER		PRODUCT I.D.: CVBS	DESCRIPTION: 62" X 312" X 8" SEPARATE BASE SLAB		
	QUALITY CONTROL CHECKLIST <input type="checkbox"/> ALL DIMENSIONS CORRECT. <input type="checkbox"/> LIFTERS INSTALLED. <input type="checkbox"/> CORRECT THICKNESS. <input type="checkbox"/> REINFORCING CORRECT. <input type="checkbox"/> FINISH ON SLAB SURFACE UNIFORM. <input type="checkbox"/> OUTSIDE TOP EDGE TROWELLED. <input type="checkbox"/> SOLID TONGUE JOINT INSTALLED.	PRODUCT VIEW: RIGHT SIDE UP	CUSTOMER: ENDESOL, INC.		
		PLANT: BEAVER DAM, KY	PROJECT: VSG 3-26		
		WEIGHT: 15,920 LBS	STRUCTURE: 61043 (1)		
		TOP SECTION JOINT: SOLID TONGUE	ORDER NO: 26-1043		
		BASE SECTION JOINT: N / A	PE: J.H. ROSS	DRAWING: K. CARDWELL	
		QC CHECK INITIALS:	DATE: 01/20/26	SCALE: NTS	PG. 1 OF 1

4

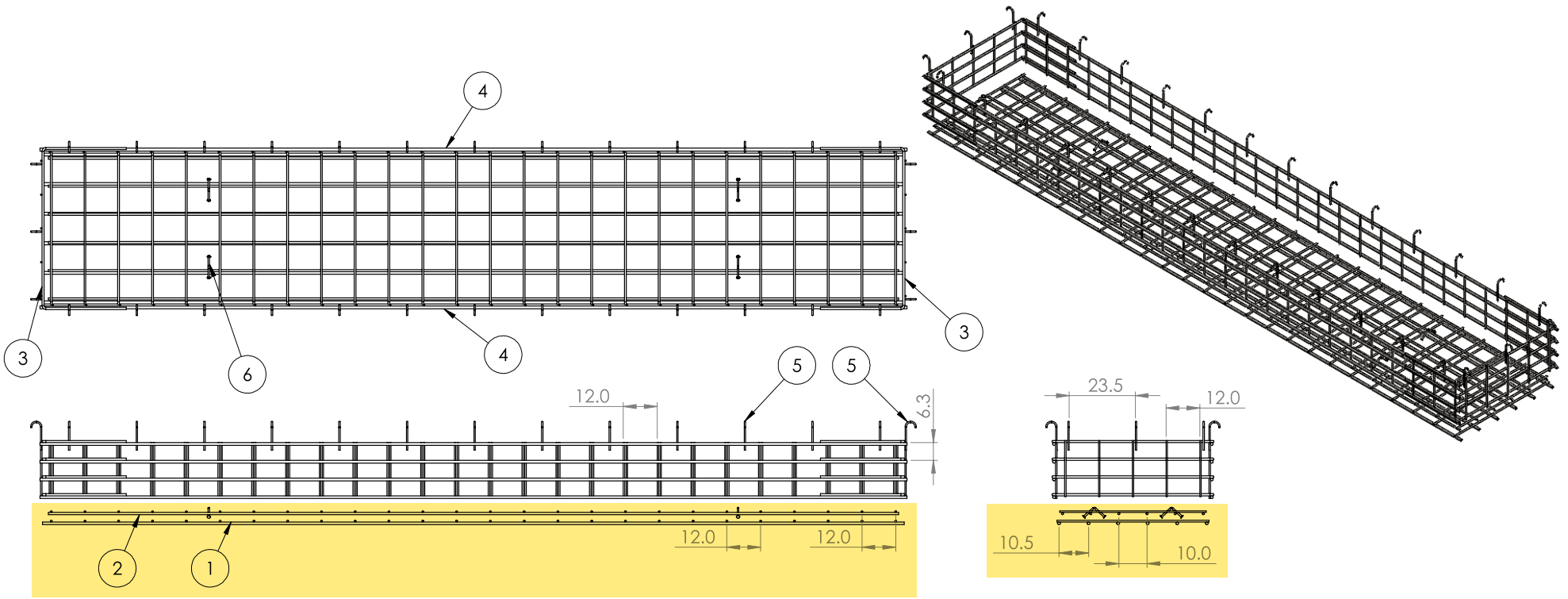
3

2

1

B

B



ITEM NO.	PART NUMBER	Qty.
1	17 Travel Base Bottom Mat	1
2	17 Travel Base Top Mat	1
3	Short Wall	2
4	17 Travel Long Wall	2
5	#4 0904J	32
6	6CA18 Lift Hooks	8

- NOTES:
1. Rebar: #5, #6, #8 A614 Grade 60
 2. All Rebar to have 1.5" Cover Minimum

PROPRIETARY AND CONFIDENTIAL
 THE INFORMATION CONTAINED IN THIS DRAWING IS THE SOLE PROPERTY OF ENDESOL INC. ANY REPRODUCTION IN PART OR AS A WHOLE WITHOUT THE WRITTEN PERMISSION OF ENDESOL INC. IS PROHIBITED.

UNLESS OTHERWISE SPECIFIED:		NAME	DATE	TITLE: 17 Travel Base and Riser Rebar Layout	
DIMENSIONS ARE IN INCHES		DRAWN	CMJ		3-25-16
TOLERANCES:		CHECKED	JHR		3-25-16
FRACTIONAL ± 1/8"		ENG APPR.	XXXX		XXXX
TWO PLACE DECIMAL ±.13		MFG APPR.	XXXX		XXXX
THREE PLACE DECIMAL ±.125		Q. A.	XXXX	XXXX	
INTERPRET GEOMETRIC TOLERANCING PER:		COMMENTS:			
MATERIAL		Rebar A614 G60			
FINISH		MILL			
NEXT ASSY	USED ON	APPLICATION			
		DO NOT SCALE DRAWING			
SIZE	DWG. NO.	REV			
B	17 Travel Base and Riser Rebar Layout	X1			
SCALE: 1:50		WEIGHT:		SHEET 1 OF 1	

4

3

2

1

A

A

4

3

2

1

ITEM NO.	PART NUMBER	DESCRIPTION	QTY.
1	6CA18	#8 Rebar	6
2	#5_54.0	#5 Rebar	26

#5 Rebar

#8 Rebar

306.0

54.0

12.0 - TYP.

10.5 - TYP.



981 W. 7th Street
 Beaver Dam, KY
 42320
 P 270-363-2238
 F 270-363-2234
 iCastInc.com

DIMENSIONS ARE IN INCHES
 TOLERANCES:
 FRACTIONAL ±
 ANGULAR: MACH ± BEND ±
 TWO PLACE DECIMAL ±
 THREE PLACE DECIMAL ±
 MATERIAL
 FINISH
 DO NOT SCALE DRAWING

	NAME	DATE
DRAWN	CMJ	1/25/21
CHECKED	JHR	1/25/21
ENG APPR.		
MFG APPR.		
Q.A.		
COMMENTS:		

17' Travel Vault
 Base Bottom Mat

PROPRIETARY AND CONFIDENTIAL
 THE INFORMATION CONTAINED IN THIS DRAWING IS THE SOLE PROPERTY OF
 INFRASTRUCTURE PRECAST INC. (iCAST). ANY REPRODUCTION IN PART OR
 AS A WHOLE WITHOUT THE WRITTEN PERMISSION OF iCAST IS PROHIBITED.

SIZE: L0WS. NO. REV.
B7 Travel Base Bottom Mat
 SCALE: 1:50 WEIGHT: SHEET 1 OF 1

4

3

2

1

B

B

A

A

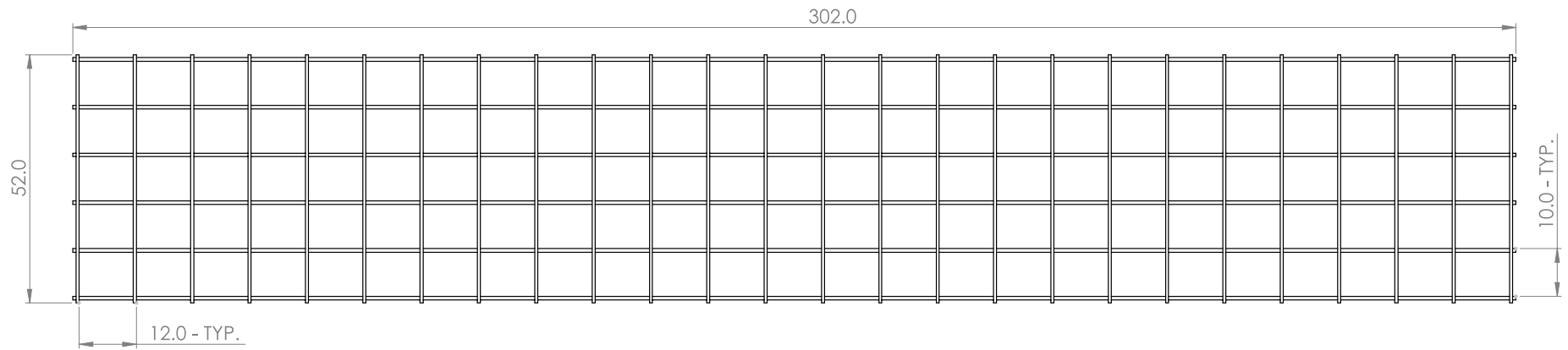
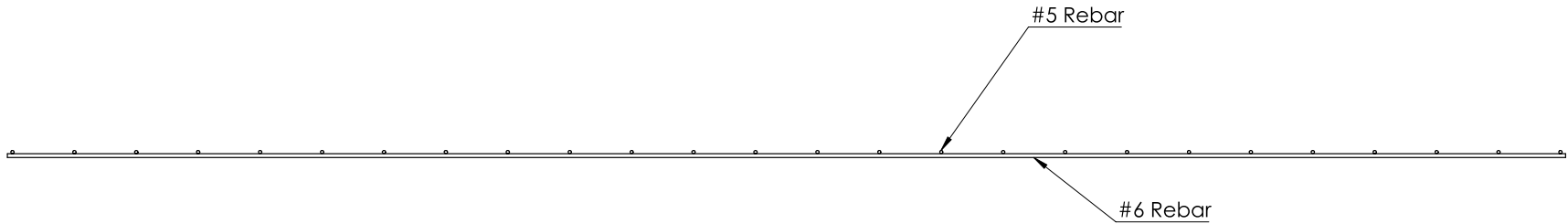
4

3

2

1

ITEM NO.	PART NUMBER	DESCRIPTION	QTY.
1	#6_302.0	#6 Rebar	6
2	#5_52.0	#5 Rebar	26



981 W. 7th Street
 Beaver Dam, KY
 42320
 P 270-363-2238
 F 270-363-2234
 iCastInc.com

DIMENSIONS ARE IN INCHES
 TOLERANCES:
 FRACTIONAL: ±
 ANGULAR: MACH ± BEND ±
 TWO PLACE DECIMAL ±
 THREE PLACE DECIMAL ±

	NAME	DATE
DRAWN	CMJ	1/25/21
CHECKED	JHR	1/25/21
ENG APPR.		
MFG APPR.		
Q.A.		
COMMENTS:		

PROPRIETARY AND CONFIDENTIAL
 THE INFORMATION CONTAINED IN THIS DRAWING IS THE SOLE PROPERTY OF
 INFRASTRUCTURE PRECAST INC. (ICAST). ANY REPRODUCTION IN PART OR
 AS A WHOLE WITHOUT THE WRITTEN PERMISSION OF ICAST IS PROHIBITED.

FINISH
 DO NOT SCALE DRAWING

17' Travel Vault
 Base Top Mat

SIZE: **B** QWG: NO.
 17' Travel Base Top Mat REV.
 SCALE: 1:50 WEIGHT: SHEET 1 OF 1

4

3

2

1

