

Job Name: 26-1035 Sixty-Nine Gardens Manholes
 Job Location: Savannah, TN
 Contractor: Summertown Metals

Plant: Beaver Dam
 2/20/2026 10:31:56 AM

Tech: S. Felletter
 PC: T. Lewis



Structure ID: 1 (2)

P1 MH048BA18CDARED

MH BASE w/ConBlock-CDA Red T/n

| | |
|--|----------------|
| P4) 24" - CASTING HEIGHT - 7" | 0 lb |
| P3) 24" - GRADE RING w/ConBlock-CDA Red F/F - 3" | 202 lb |
| P2) 48" - ECC CONE w/ 24" HOLE, w/ConBlock-CDA Red F/G - 24" | 1738 lb |
| P1) 48" - MH BASE w/ConBlock-CDA Red T/n - 18" | 2492 lb |
| 1) JOINT WRAP PRIMER - CONSEAL CS-75 (1 gal.) | 0 lb |
| 1) JOINT WRAP - 0.065"x6"x50' CONSEAL CS212 | 0 lb |
| 1) 48" - MH INVERT CHANNEL w/ConBlock-CDA Red - FULL HEIGHT | 1440 lb |
| 1) CASTING - HOE MC-375 F/C Sanitary | 271 lb |
| 1) 48" - Conseal CS-102 1.00" (Double) | 0 lb |
| 2) PSX - 12-08 NYLO | 16 lb |
| 3) MH Step ML-10-TDS-NCR - 10" | 0 lb |
| 57.3 SqFt) CS-55 BLACK ACRYLLIC [EXT] | 0 lb |
| Structure Total: | 6160 lb |

Structure Notes:
 1. PER ASTM C478 SPECIFICATIONS.
 2. CONCRETE = 4,000 PSI AT 28 DAYS.
 3. ADMIXTURE = CONBLOCK CDA RED.
 4. CASTING HOE MC-375 SANITARY BY ICAST.

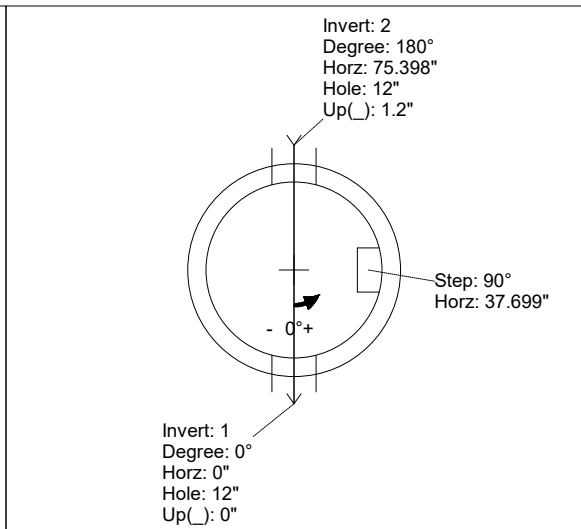
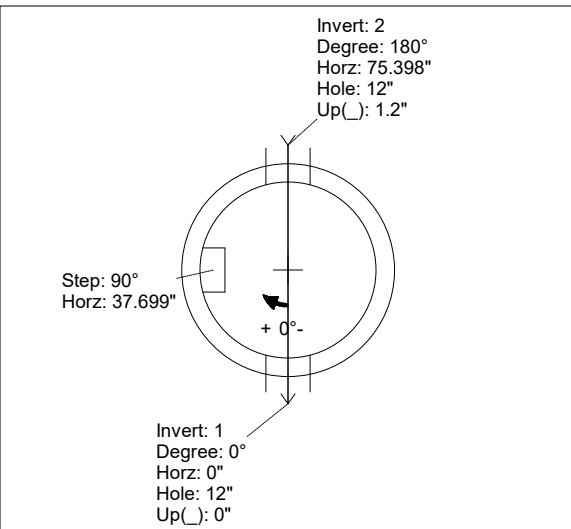
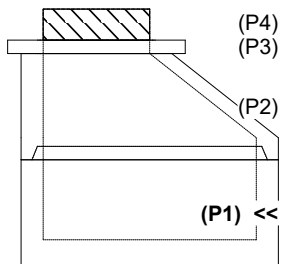
REINFORCING PER ASTM A615 (GRADE 60).
 - CONE (As .12)
 - RISER/WALLS (As .12)
 - FLOOR (As .31) #5 BARS AT 12" C.C.E.W.

Rim: 4.17' Rim to Invert: 4.17' Slack: 0.04" Sump: 2" Step Position: 90

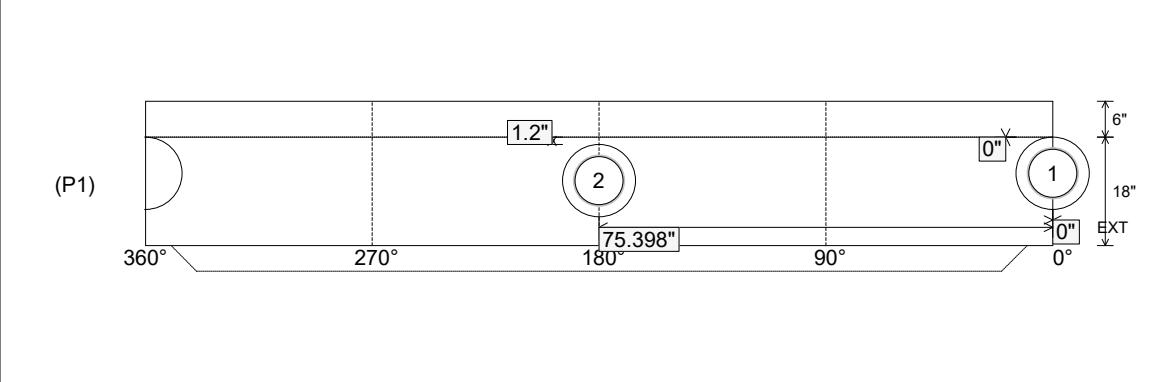
| Position | Elev | Angle | Ext. (cw) | Pipe | Pipe OD | Connector | Hole | Horz Size | Up (⌋) | Offset |
|----------|------|-------|-----------|--------------|---------|----------------|------|-----------|--------|--------|
| Invert 1 | 0' | 0° | 0" | 8" PVC SDR35 | 8.5" | PSX 12-08 NYLO | 12" | 12.129" | 0" | 0" |
| Invert 2 | 0.1' | 180° | 91.106" | 8" PVC SDR35 | 8.5" | PSX 12-08 NYLO | 12" | 12.129" | 1.2" | 0" |
| Invert 3 | | | | | | | | | | |
| Invert 4 | | | | | | | | | | |
| Invert 5 | | | | | | | | | | |
| Invert 6 | | | | | | | | | | |
| Invert 7 | | | | | | | | | | |
| Invert 8 | | | | | | | | | | |

RIGHT-SIDE UP VIEW (int. dimensions)

UPSIDE-DOWN VIEW (int. dimensions)



INSIDE WALL DIMENSIONS



| | | | | |
|---|---------------------------------|--|--|--|
| Coating (Int): Coating (Ext): CS-55 BLACK ACRYLLIC | Seam Up: Tongue Seam Dn: n/a | Wall Thickness: 5" Floor Height: 6" | Height (Int): 18" Height (Ext): 24" | Weight (Net): 2492 lb Volume (Net): 0.64cu.yd |
|---|---------------------------------|--|--|--|

Job Name: 26-1035 Sixty-Nine Gardens Manholes
 Job Location: Savannah, TN
 Contractor: Summertown Metals

Plant: Beaver Dam
 2/20/2026 10:31:56 AM

Tech: S. Felletter
 PC: T. Lewis



Structure ID: 1 (2)

P1 MH048BA18CDARED

MH BASE w/ConBlock-CDA Red T/n

- P4) 24" - CASTING HEIGHT - 7" 0 lb
- P3) 24" - GRADE RING w/ConBlock-CDA Red F/F - 3" 202 lb
- P2) 48" - ECC CONE w/ 24" HOLE, w/ConBlock-CDA Red F/G - 24" 1738 lb
- P1) 48" - MH BASE w/ConBlock-CDA Red T/n - 18" 2492 lb
- 1) JOINT WRAP PRIMER - CONSEAL CS-75 (1 gal.) 0 lb
- 1) JOINT WRAP - 0.065"x6"x50' CONSEAL CS212 0 lb
- 1) 48" - MH INVERT CHANNEL w/ConBlock-CDA Red - FULL HEIGHT 1440 lb
- 1) CASTING - HOE MC-375 F/C Sanitary 271 lb
- 1) 48" - Conseal CS-102 1.00" (Double) 0 lb
- 2) PSX - 12-08 NYLO 16 lb
- 3) MH Step ML-10-TDS-NCR - 10" 0 lb
- 57.3 SqFt) CS-55 BLACK ACRYLLIC [EXT] 0 lb

- Structure Notes:**
1. PER ASTM C478 SPECIFICATIONS.
 2. CONCRETE = 4,000 PSI AT 28 DAYS.
 3. ADMIXTURE = CONBLOCK CDA RED.
 4. CASTING HOE MC-375 SANITARY BY ICAST.

REINFORCING PER ASTM A615 (GRADE 60).
 - CONE (As .12)
 - RISER/WALLS (As .12)
 - FLOOR (As .31) #5 BARS AT 12" C.C.E.W.

Structure Total: 6160 lb

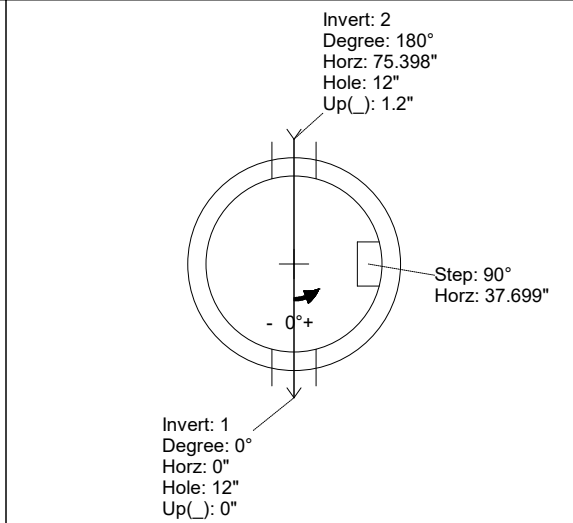
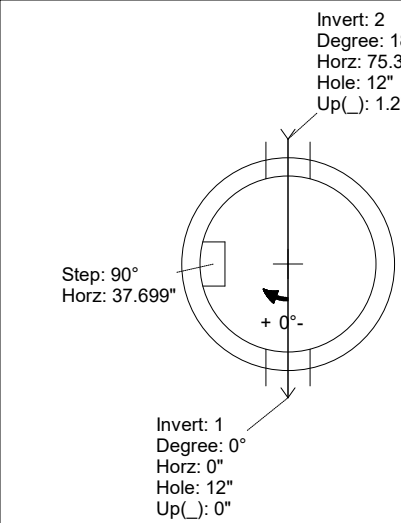
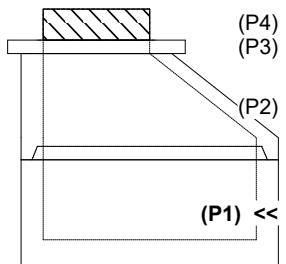
**INVERT CHANNEL DRAWING.
 FULL HEIGHT INVERT**

Rim: 4.17' Rim to Invert: 4.17' Slack: 0.04" Sump: 2" Step Position: 90

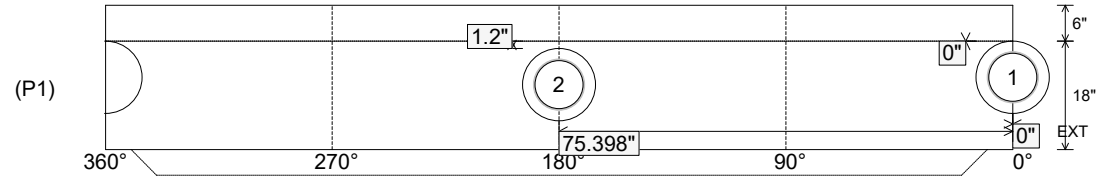
| Position | Elev | Angle | Ext. (cw) | Pipe | Pipe OD | Connector | Hole | Horz Size | Up () | Offset |
|----------|------|-------|-----------|--------------|---------|----------------|------|-----------|--------|--------|
| Invert 1 | 0' | 0° | 0" | 8" PVC SDR35 | 8.5" | PSX 12-08 NYLO | 12" | 12.129" | 0" | 0" |
| Invert 2 | 0.1' | 180° | 91.106" | 8" PVC SDR35 | 8.5" | PSX 12-08 NYLO | 12" | 12.129" | 1.2" | 0" |
| Invert 3 | | | | | | | | | | |
| Invert 4 | | | | | | | | | | |
| Invert 5 | | | | | | | | | | |
| Invert 6 | | | | | | | | | | |
| Invert 7 | | | | | | | | | | |
| Invert 8 | | | | | | | | | | |

RIGHT-SIDE UP VIEW (int. dimensions)

UPSIDE-DOWN VIEW (int. dimensions)



INSIDE WALL DIMENSIONS



| | | | | |
|---|---------------------------------|--|--|--|
| Coating (Int): Coating (Ext): CS-55 BLACK ACRYLLIC | Seam Up: Tongue Seam Dn: n/a | Wall Thickness: 5" Floor Height: 6" | Height (Int): 18" Height (Ext): 24" | Weight (Net): 2492 lb Volume (Net): 0.64cu.yd |
|---|---------------------------------|--|--|--|