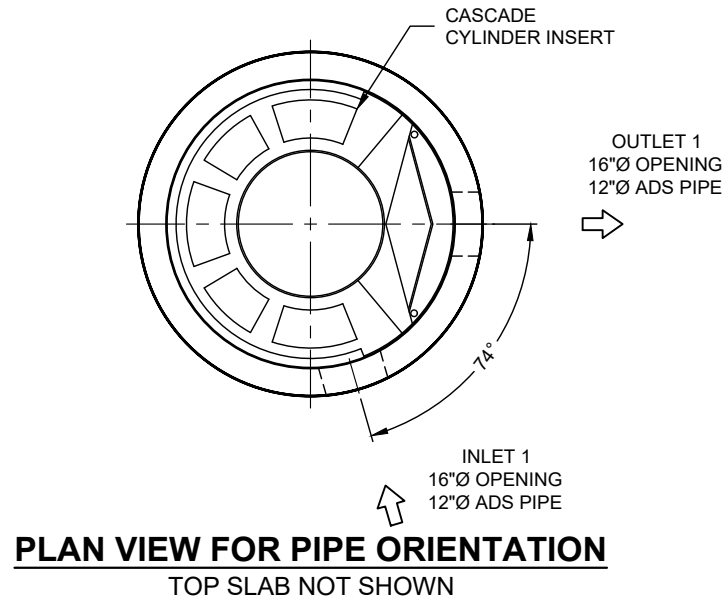
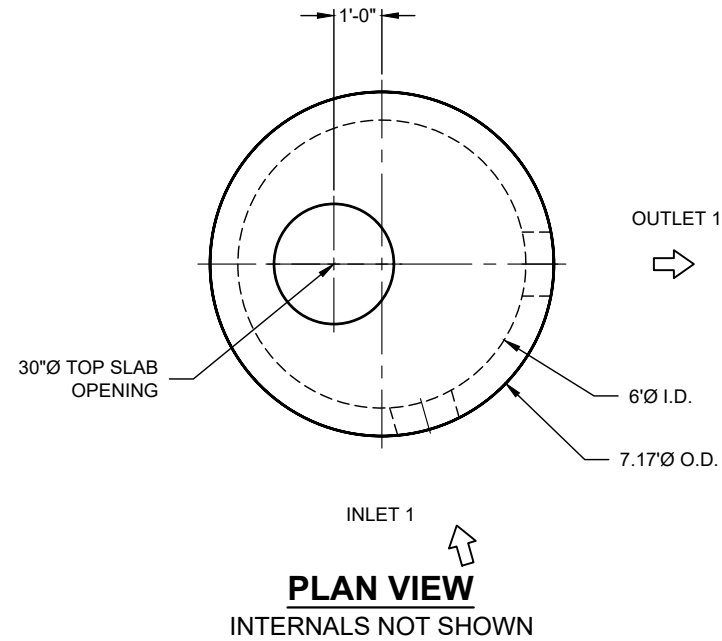


# 26-1029 - 873697 BJ's Wholesale Club



### MATERIAL LIST

| COUNT | DESCRIPTION  | PART NUMBER | PROVIDED BY | INSTALLED BY |
|-------|--|-------------|-------------|--------------|
| 1     | CS-6 CYLINDER INSERT, STD.                         | 325-003951  | CONTECH     | PRECASTER    |
| 5     | CS-6 ALUMINUM INSTALLATION BRACKETS                | 325-003956  | CONTECH     | PRECASTER    |
| 1     | CS-6 HARDWARE KIT                                  | 325-003965  | CONTECH     | PRECASTER    |
| 1     | SEALANT FOR JOINTS                                 |             | PRECASTER   | CONTRACTOR   |
| 1     | 30"Ø X 4" FRAME AND COVER, EJ #41600483, OR EQUIV. | 325-000332  | CONTECH     | CONTRACTOR   |

### GENERAL NOTES

- DESIGN LOADING - AASHTO HS-20
- ALL PRECAST CONCRETE MANUFACTURED PARTS SHALL CONFORM TO ASTM C-478, WITH MINIMUM CONCRETE STRENGTH OF 4000 PSI AT 28 DAYS
- JOINT SEALANT SHALL CONFORM TO ASTM C-990 OR ASTM C-443
- GROUND WATER ELEVATION ASSUMED AT OUTLET INVERT
- MANUFACTURING TOLERANCE = +/- 1/2-INCH
- SOME HIDDEN LINES MAY BE OMITTED FOR CLARITY

### INSTALLATION NOTES

- PRECASTER TO SHIP ACCESS CASTINGS WITH STRUCTURE
- REFER TO CONTECH ASSEMBLY INSTRUCTIONS FOR ADDITIONAL INFORMATION.
- PRECASTER TO INSTALL INTERNAL COMPONENTS PRIOR TO SHIPPING UNLESS INSTRUCTED OTHERWISE BY CONTECH
- PIPE OPENINGS SHALL BE STENCILED "INLET" OR "OUTLET" AS APPROPRIATE
- APPLYING ALIGNMENT MARKS ON ALL PIECES OF MULTIPLE PIECE ASSEMBLIES IS ENCOURAGED
- IF STRUCTURE IS DELIVERED IN MULTIPLE SECTIONS, EACH PIECE SHALL BE LABELED WITH THE CONTECH PROJECT NUMBER, SEQUENCE NUMBER AND SITE DESIGNATION

### SITE INFORMATION

RIM ELEV. = 734.71+/-  
 TOP OF STRUCTURE = 733.48  
 INLET PIPE 1 INVERT ELEV. = 727.23  
 INLET PIPE 1 DIAMETER AND MATERIAL = 12"Ø ADS  
 OUTLET PIPE INVERT ELEV. = 727.23  
 OUTLET PIPE DIAMETER AND MATERIAL = 12"Ø ADS  
 OUTSIDE BOTTOM OF STRUCTURE ELEV. = 721.56

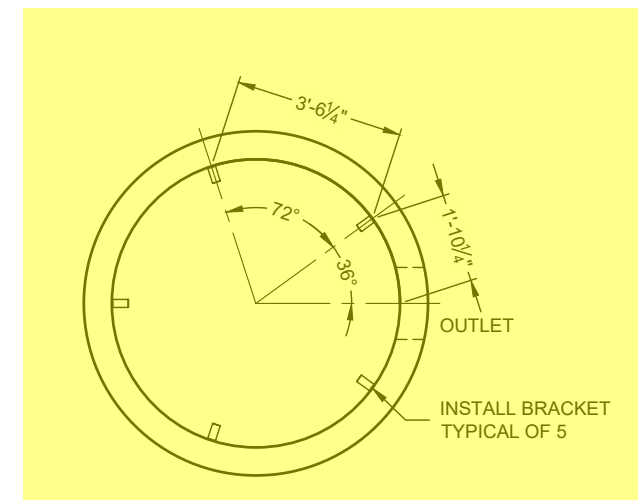
### STRUCTURE WEIGHT

APPROXIMATE HEAVIEST PICK = 18500 LBS.  
 STRUCTURE IS DELIVERED IN 2 PIECES

TOP SLAB = 5000 LBS.  
 CONTROL RISER = 6000  
 BASE SECTION = 18500 LBS.

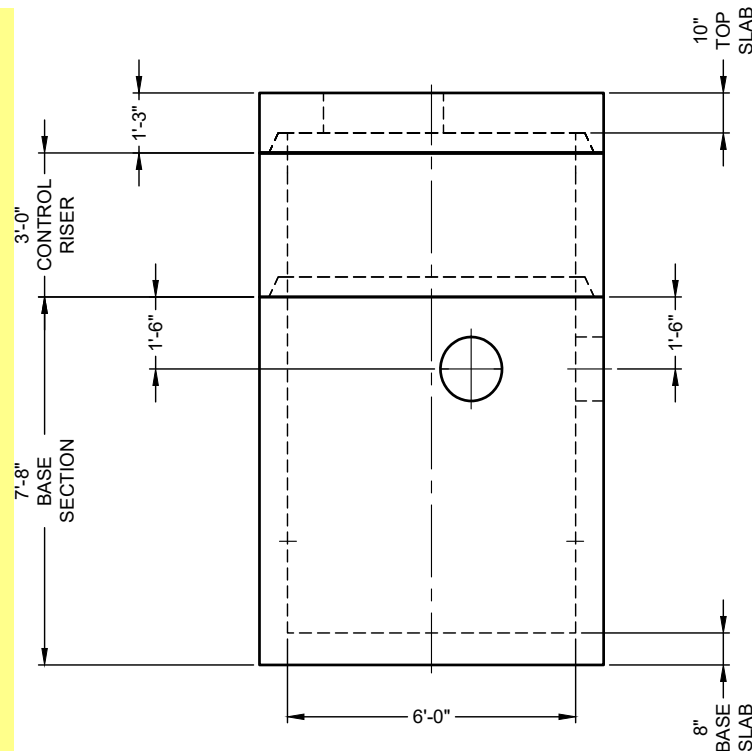
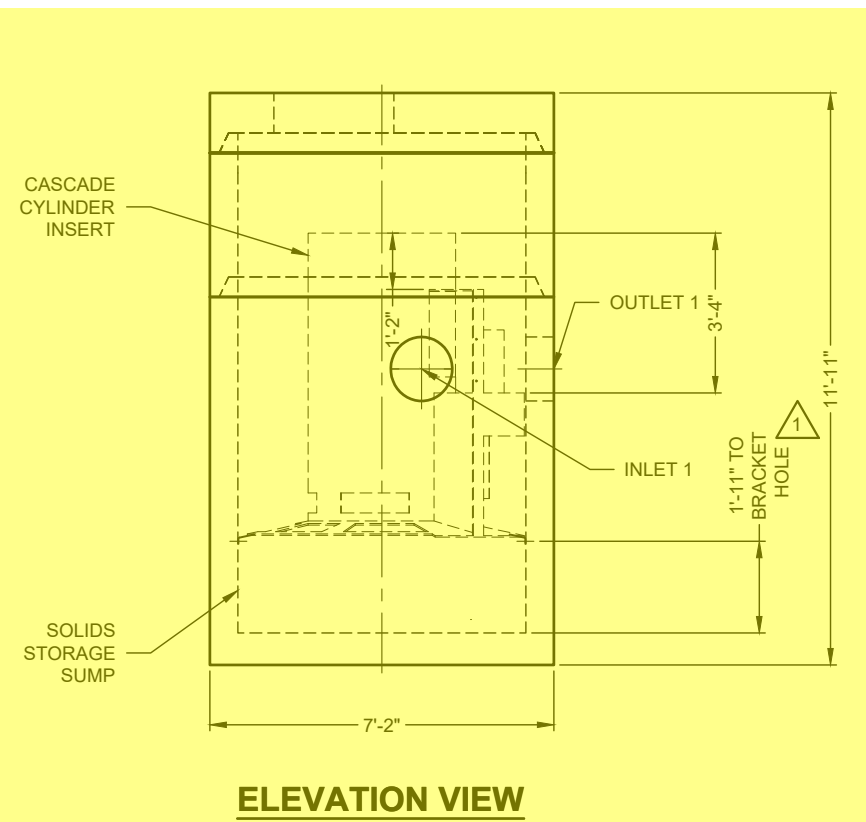
CONTECH  
**FABRICATION**  
 DRAWING

### SUPPORT BRACKET LAYOUT PLAN VIEW



**15-CS-6**  
**ICAST to fully pre-assemble internal materials prior to shipment.**

SEE INSTALLATION NOTE A



ICAST  
 5888 / 757440  
 LAYOUT 1A  
 13.66TS

The design and information shown on this drawing is the property of CONTECH Construction Products, Inc. or one of its affiliated companies ("CONTECH"). Neither this drawing, nor any part thereof, may be used, reproduced, or transmitted in any form or by any means, electronic or mechanical, including photocopying, recording, or by any information storage and retrieval system, without the prior written consent of CONTECH. Failure to comply with these terms shall constitute a breach of contract and shall discontinue any liability or responsibility for such use. If discrepancies between the supplied information upon which the drawing is based and actual field conditions are encountered as site work progresses, these shall be immediately reported to the design engineer. CONTECH immediately for re-evaluation of the design. CONTECH accepts no liability for designs based on missing, incomplete or inaccurate information supplied by others.

| MARK | DATE     | REVISION DESCRIPTION | BY  |
|------|----------|----------------------|-----|
| 1    | 1/8/2026 | BRACKET DIMENSION    | MDB |

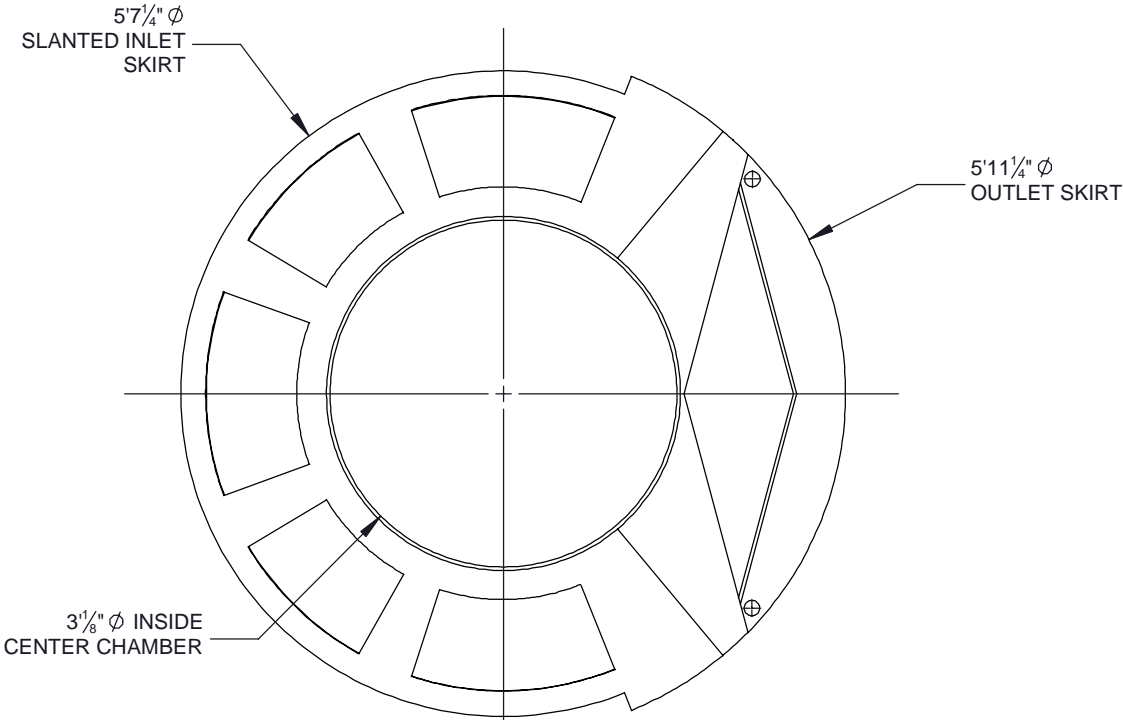
CS-6 - 873697-15  
 BJ'S - WHOLESALE CLUB - FRANKFORT  
 FRANKFORT, KY  
 SITE DESIGNATION: S213

**CONTECH**  
 ENGINEERED SOLUTIONS LLC  
 A CONTECH COMPANY  
 810 Centre Pointe Dr., Suite 400, West Chester, OH 45380  
 800.338.1122 513.645.7000 513.645.7803 FAX  
**CASCADE separator**  
 FOR PATENT INFORMATION, GO TO www.contech.com/PS

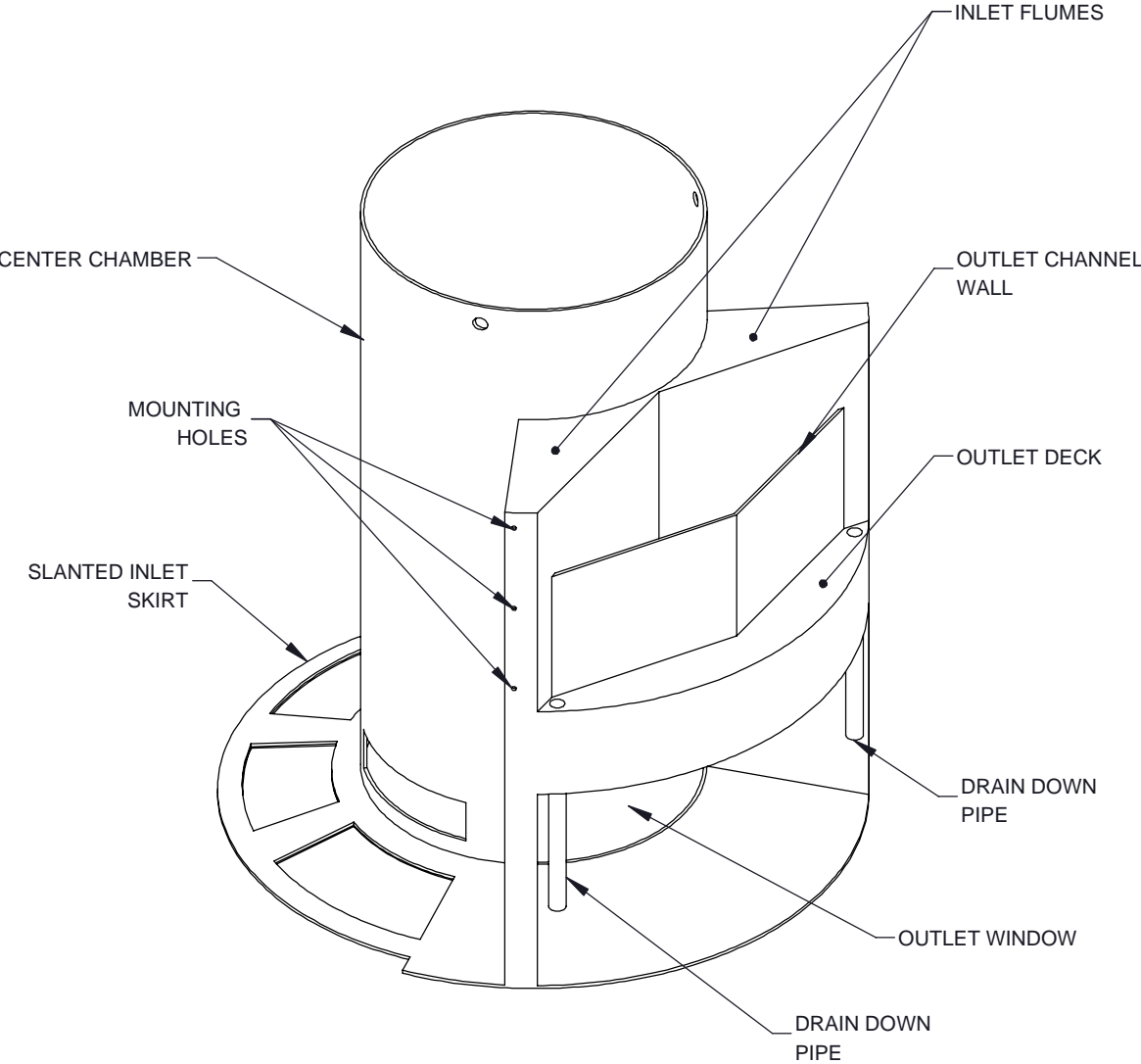
DATE: 12/30/2025

|                     |                  |
|---------------------|------------------|
| DESIGNED: MDB       | DRAWN: MDB       |
| CHECKED: CEU        | APPROVED: MDB    |
| PROJECT No.: 873697 | SEQUENCE No.: 15 |
| SHEET: 1            | OF 1             |

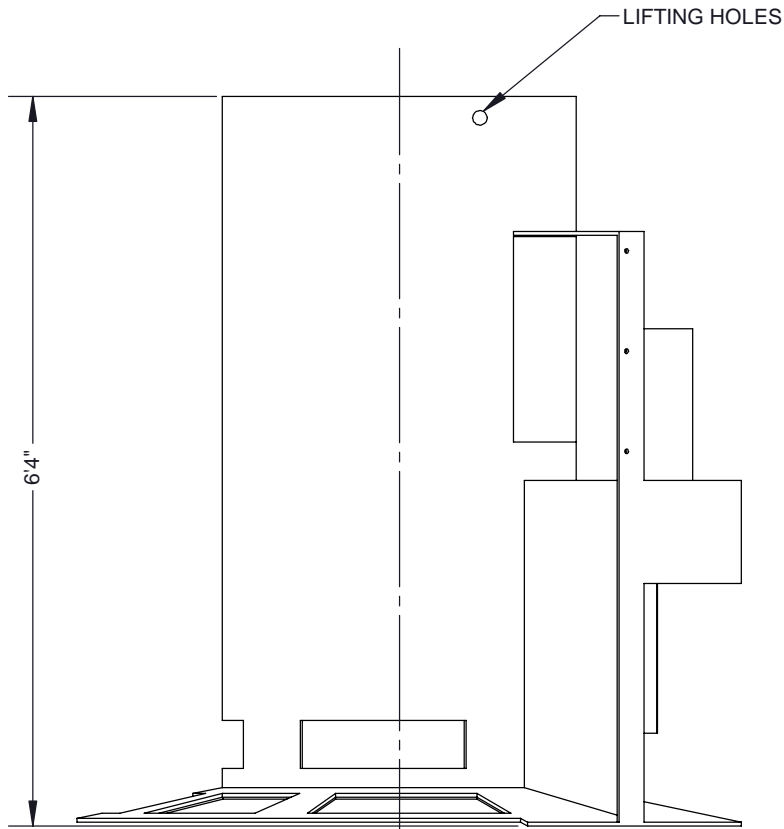
I:\QUIKRETE.NET\CONTECH\HMER\IN\PROJECT\ACT\TIVE\873697\873697-15-CS-6-CONF.ABD.DWG 1/8/2026 5:00 PM



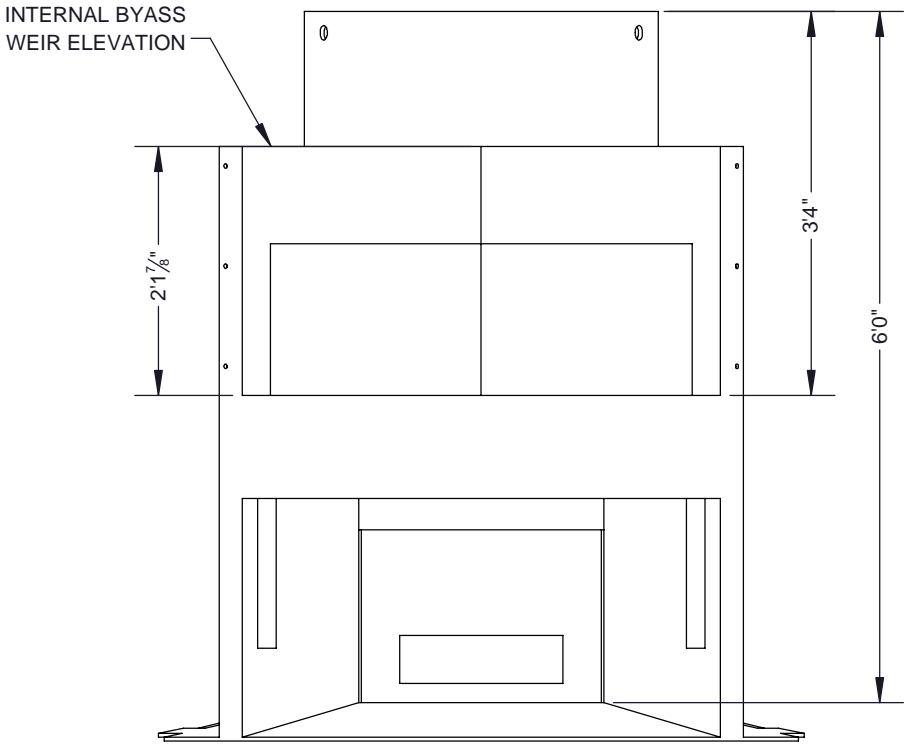
**PLAN VIEW**



**ISOMETRIC VIEW**



**ELEVATION VIEW**



**ELEVATION VIEW: OUTLET SIDE**

NOTES:  
1. SEE CASCADE SEPARATOR INSTALLATION GUIDE FOR ADDITIONAL INFORMATION

The design and information shown on this drawing is provided as a service to the project owner, engineer and contractor by Contech Engineered Solutions LLC, or one of its affiliated companies ("Contech"). Neither this drawing, nor any part thereof, may be used, reproduced or modified in any manner without the prior written consent of Contech. Failure to comply is done at the user's own risk and Contech expressly disclaims any liability or responsibility for such use.

If discrepancies between the supplied information upon which the drawing is based and actual field conditions are encountered as site work progresses, these discrepancies must be reported to Contech immediately for re-evaluation of the design. Contech accepts no liability for designs based on missing, incomplete or inaccurate information supplied by others.

**CASCADE**  
separator™

**CONTECH**  
ENGINEERED SOLUTIONS LLC  
www.ContechES.com  
9025 Centre Pointe Dr., Suite 400, West Chester, OH 45069  
800-338-1122 513-645-7000 513-645-7993 FAX

REFERENCE DETAIL  
INTERNALS CS-6  
CASCADE SEPARATOR

THIRD ANGLE PROJECTION  
UNLESS OTHERWISE SPECIFIED DIMENSIONS ARE IN INCHES  
TOLERANCES:  
FRACTIONAL ± 1/16  
ANGLES ± 1 DEGREE  
TWO PLACE DECIMAL ± 0.06  
THREE PLACE DECIMAL ± 0.030

|                                 |                              |
|---------------------------------|------------------------------|
| PART NUMBER: 325-003951         |                              |
| APPROVED BY:<br>M. BROOKS       | DRAWN BY:<br>J. BELL         |
| APPROVED BY DATE:<br>2021.10.21 | DRAWN BY DATE:<br>2021.09.15 |
| SCALE:<br>N/A                   | REV:<br>B                    |
| SHEET 1 OF 1                    |                              |