

Job Name: 26-1029 - 873697 BJ's Wholesale Club
 Job Location: Frankfort, KY
 Contractor: Contech Engineering Solutions

Plant: Beaver Dam
 1/9/2026 8:56:52 AM

Tech: J. Coppage
 PC: T. Sekula



Structure ID: 15-CS-6

P3 MH072LD15-30ECC

MH FLAT TOP SPEC. (30" ECC HOLE)

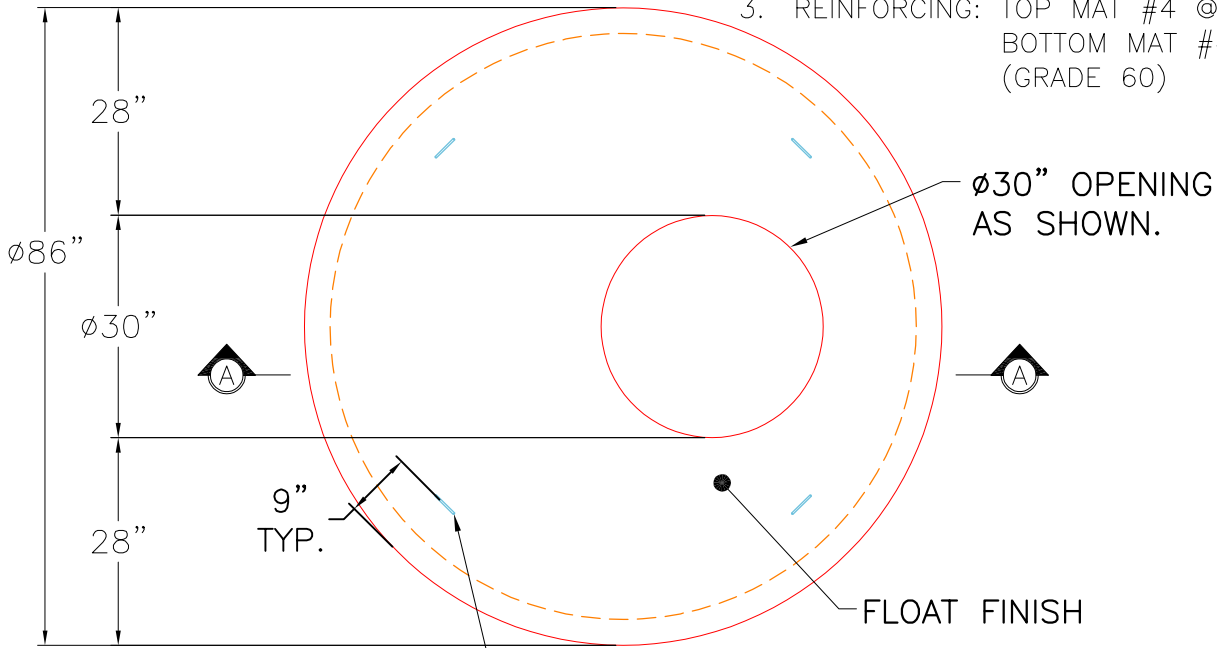
- P4) 30" - CASTING HEIGHT - 4"
- P3) 72" - MH FLAT TOP SPEC. (30" ECC HOLE) - 15"
- P2) 72" - MH RISER - 36"
- P1) 72" - MH BASE - 84"
- 1) ASSEMBLY REQUIRED
- 1) CVSTENCILING
- 2) 72" - Conseal CS-102 1.00"
- 2) Hole - 16

Structure Notes:
 (4" TALL CASTING PROVIDED BY OTHERS)
 LIFTING ANCHORS TO BE INSTALLED ON THE OUTSIDE OF THE STRUCTURE
 ICAST TO INSTALL THE INTERNALS
 CONTECH'S LOGO AS WELL AS THE INLET AND THE OUTLET MUST BE STENCILED ONTO THE STRUCTURE

Structure Total: 25816 lb

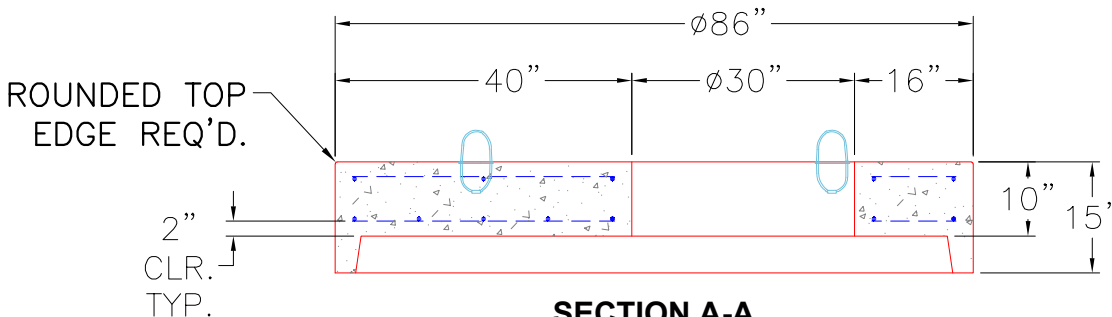
GENERAL NOTES:

1. MANUFACTURED TO ASTM C-478 (LATEST REVISION).
2. CONCRETE 5,000 PSI AT 28 DAYS.
3. REINFORCING: TOP MAT #4 @ 18" O.C. E.W. BOTTOM MAT #4 @ 9" O.C. E.W. (GRADE 60)



4 EA. CONAC WRA016 WIRE ROPE ANCHORS CAST IN.

PLAN VIEW



SECTION A-A

Coating (Int): Coating (Ext):	Seam Up: Flat Seam Dn: Groove	Wall Thickness: 7"	Height (Ext): 15"	Weight (Net): 4661 lb Volume (Net): 1.19cu.yd
----------------------------------	----------------------------------	--------------------	-------------------	--