

Job Name: 26-1029 - 873697 BJ's Wholesale Club
 Job Location: Frankfort, KY
 Contractor: Contech Engineering Solutions

Plant: Beaver Dam
 1/9/2026 8:56:53 AM

Tech: J. Coppage
 PC: T. Sekula



Structure ID: 10-CS-8

P4 MH096LD17SP

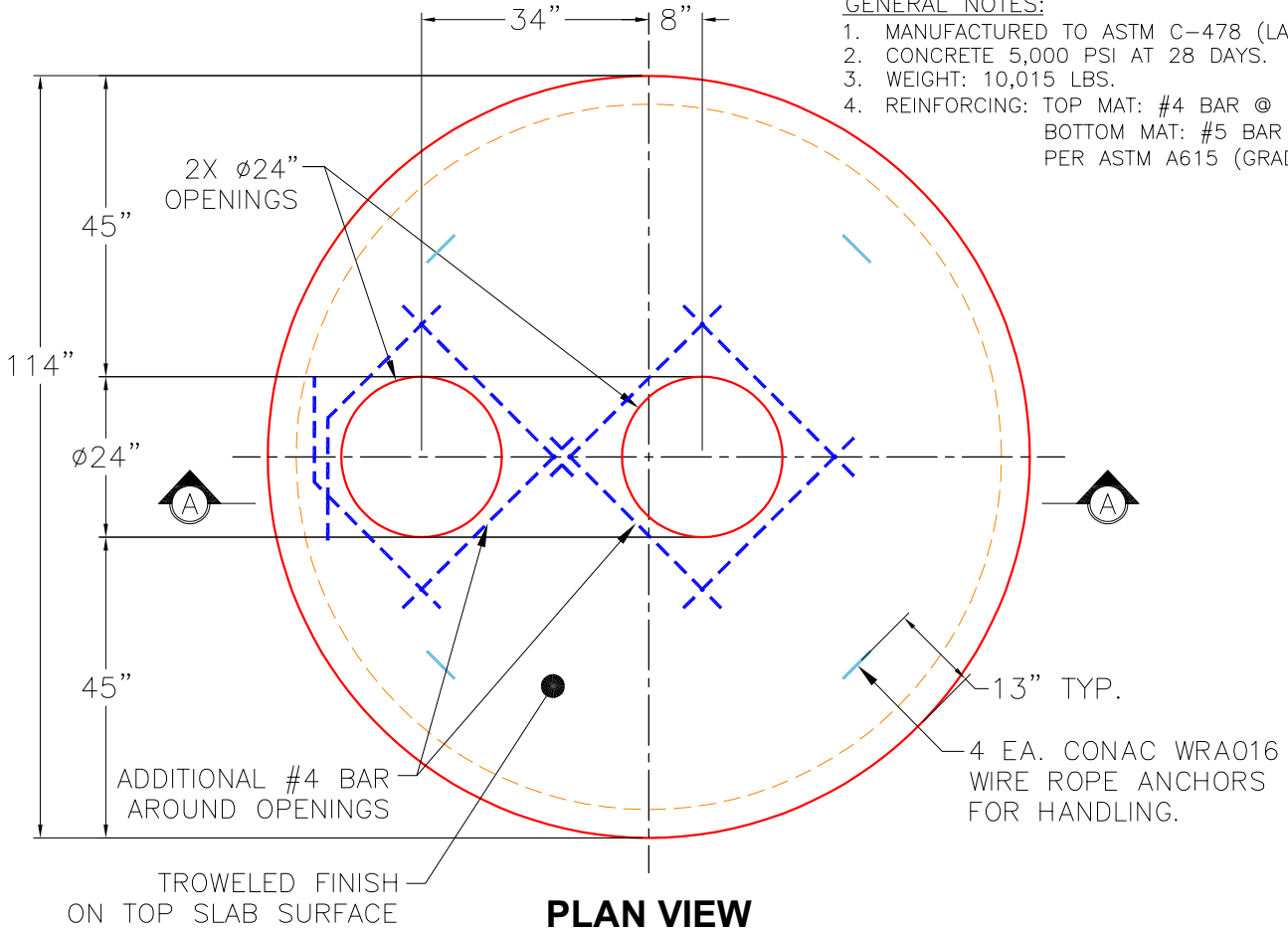
MH FLAT TOP SPEC. (2 - 24"Ø HOLES)

- P5) 24" - CASTING HEIGHT - 4"
- P4) 96" - MH FLAT TOP SPEC. (2 - 24"Ø HOLES) - 17"
- P3) 96" - MH RISER - 36"
- P2) 96" - MH RISER Custom Ht - 93"
- P1) 96" - MH MONOBASE 13F, Custom Ht - 24"
- 1) ASSEMBLY REQUIRED
- 1) CVSTENCILING
- 3) 96" - Conseal CS-102 1.00"
- 2) Hole - 16

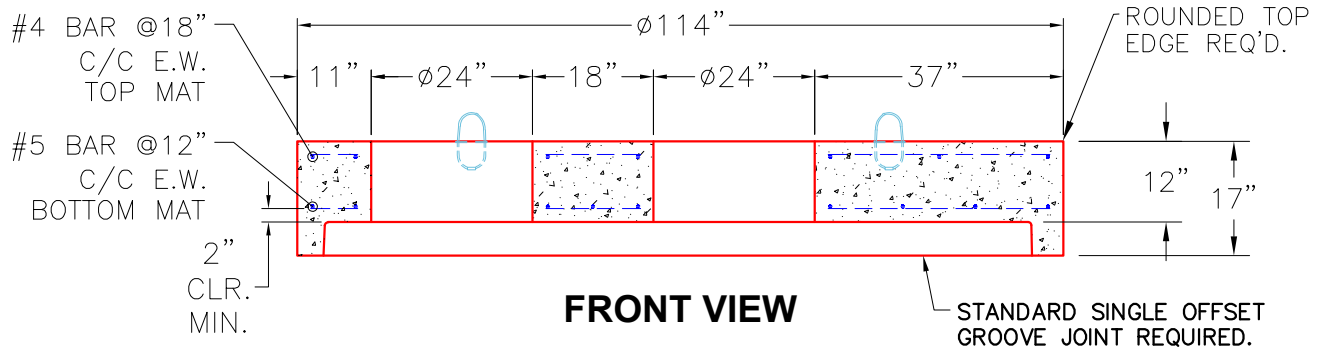
Structure Notes:
 (4" TALL CASTINGS PROVIDED BY OTHERS)
 LIFTING ANCHORS TO BE INSTALLED ON THE OUTSIDE OF THE STRUCTURE
 ICAST TO INSTALL THE INTERNALS
 CONTECH'S LOGO AS WELL AS THE INLET AND THE OUTLET MUST BE STENCILED ONTO THE STRUCTURE

Structure Total: 58960 lb

- GENERAL NOTES:**
1. MANUFACTURED TO ASTM C-478 (LATEST REVISION).
 2. CONCRETE 5,000 PSI AT 28 DAYS.
 3. WEIGHT: 10,015 LBS.
 4. REINFORCING: TOP MAT: #4 BAR @ 18" C/C E.W.
 BOTTOM MAT: #5 BAR @ 12" C/C E.W.
 PER ASTM A615 (GRADE 60)



PLAN VIEW



FRONT VIEW

Coating (Int): Coating (Ext):	Seam Up: Flat Seam Dn: Groove	Wall Thickness: 9"	Height (Ext): 17"	Weight (Net): 10015 lb Volume (Net): 2.56cu.yd
----------------------------------	----------------------------------	--------------------	-------------------	---