

Job Name: 26-1029 - 873697 BJ's Wholesale Club  
 Job Location: Frankfort, KY  
 Contractor: Contech Engineering Solutions

Plant: Beaver Dam

1/9/2026 8:56:35 AM

Tech: J. Coppage

PC: T. Sekula



**Structure ID: 10-CS-8**

**P1 MH096BAVF**

**MH MONOBASE 13F, Custom Ht**

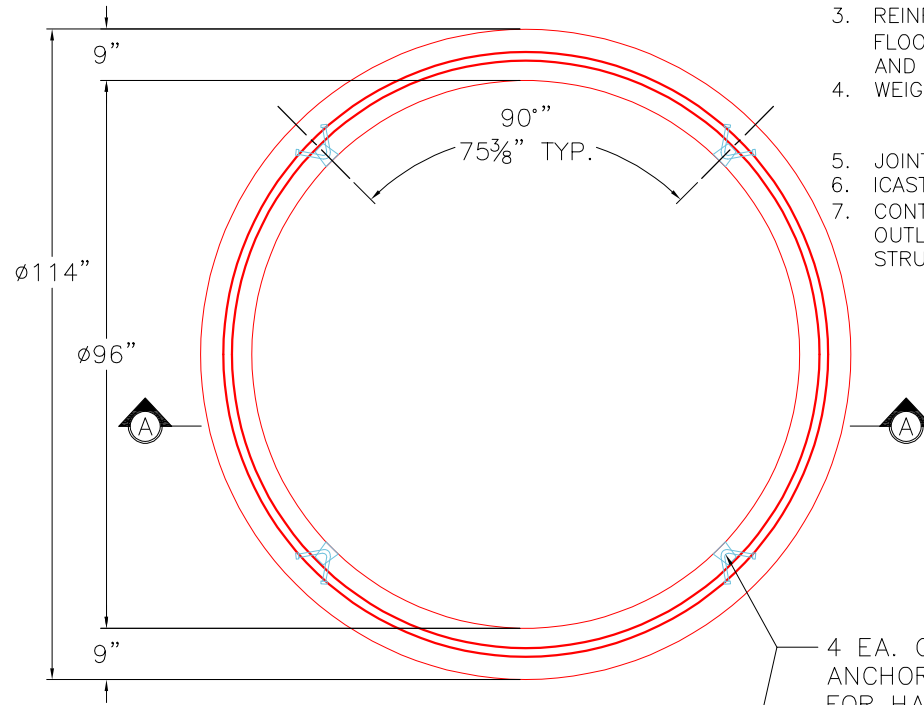
- P5) 24" - CASTING HEIGHT - 4"
- P4) 96" - MH FLAT TOP SPEC. (2 - 24"Ø HOLES) - 17"
- P3) 96" - MH RISER - 36"
- P2) 96" - MH RISER Custom Ht - 93"
- P1) 96" - MH MONOBASE 13F, Custom Ht - 24"
- 1) ASSEMBLY REQUIRED
- 1) CVSTENCILING
- 3) 96" - Conseal CS-102 1.00"
- 2) Hole - 16

0 lb Structure Notes:  
 10015 lb (4" TALL CASTINGS PROVIDED BY OTHERS)  
 8968 lb  
 22863 lb LIFTING ANCHORS TO BE INSTALLED  
 17113 lb ON THE OUTSIDE OF THE STRUCTURE  
 0 lb  
 0 lb ICAST TO INSTALL THE INTERNALS  
 0 lb  
 0 lb  
 Structure Total: 58960 lb CONTECH'S LOGO AS WELL AS THE  
 INLET AND THE OUTLET MUST BE  
 STENCILED ONTO THE STRUCTURE

Rim: 740.87' Rim to Invert: 8.37' Slack: 8.44" Sump: 82" Step Position:

GENERAL NOTES:

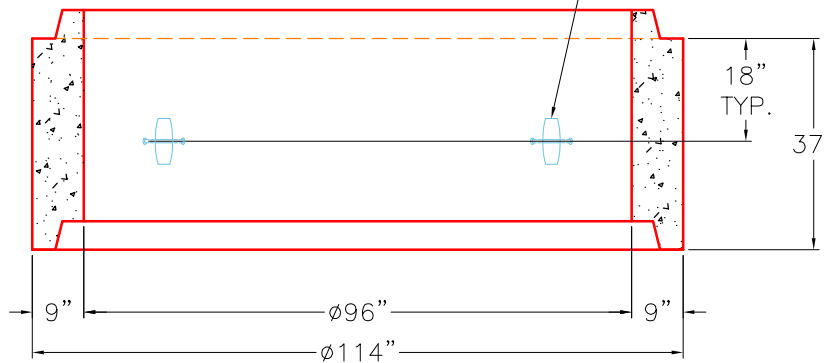
1. MANUFACTURED TO ASTM C-478 (LATEST REVISION).
2. CONCRETE 5,000 PSI AT 28 DAYS.
3. REINFORCING: WALLS - WWF AREA 0.24  
 FLOOR - AREA 0.27 - #5 BAR @ 12" C/C TOP  
 AND BOTTOM MAT.
4. WEIGHT: TOTAL - 17,113 LBS.  
 FIRST POUR - 9,216 LBS  
 SECOND POUR - 7,897 LBS
5. JOINT SEAL: CONCRETE SEALANTS INC. CS-102.
6. ICAST TO INSTALL INTERNAL BRACKETS.
7. CONTECH'S LOGO AS WELL AS THE INLETS AND  
 OUTLETS MUST BE STENCILED ONTO THE  
 STRUCTURE.



**FIRST POUR DRAWING**

4 EA. CONAC 6CA14 ANCHORS REQUIRED FOR HANDLING.

**TOP VIEW**



**SECTION A-A**

Coating (Int): Coating (Ext):	Seam Up: Tongue Seam Dn: n/a	Wall Thickness: 9" Floor Height: 13"	Height (Int): 24" Height (Ext): 37"	Weight (Net): 17113 lb Volume (Net): 4.37cu.yd
----------------------------------	---------------------------------	---	--	---

Job Name: 26-1029 - 873697 BJ's Wholesale Club  
 Job Location: Frankfort, KY  
 Contractor: Contech Engineering Solutions

Plant: Beaver Dam  
 1/9/2026 8:56:35 AM

Tech: J. Coppage  
 PC: T. Sekula



**Structure ID: 10-CS-8**

**P1 MH096BAVF**

**MH MONOBASE 13F, Custom Ht**

- P5) 24" - CASTING HEIGHT - 4"
- P4) 96" - MH FLAT TOP SPEC. (2 - 24"Ø HOLES) - 17"
- P3) 96" - MH RISER - 36"
- P2) 96" - MH RISER Custom Ht - 93"
- P1) 96" - MH MONOBASE 13F, Custom Ht - 24"
- 1) ASSEMBLY REQUIRED
- 1) CVSTENCILING
- 3) 96" - Conseal CS-102 1.00"
- 2) Hole - 16

**Structure Notes:**  
 (4" TALL CASTINGS PROVIDED BY OTHERS)  
 LIFTING ANCHORS TO BE INSTALLED ON THE OUTSIDE OF THE STRUCTURE  
 ICAST TO INSTALL THE INTERNALS  
 CONTECH'S LOGO AS WELL AS THE INLET AND THE OUTLET MUST BE STENCILED ONTO THE STRUCTURE

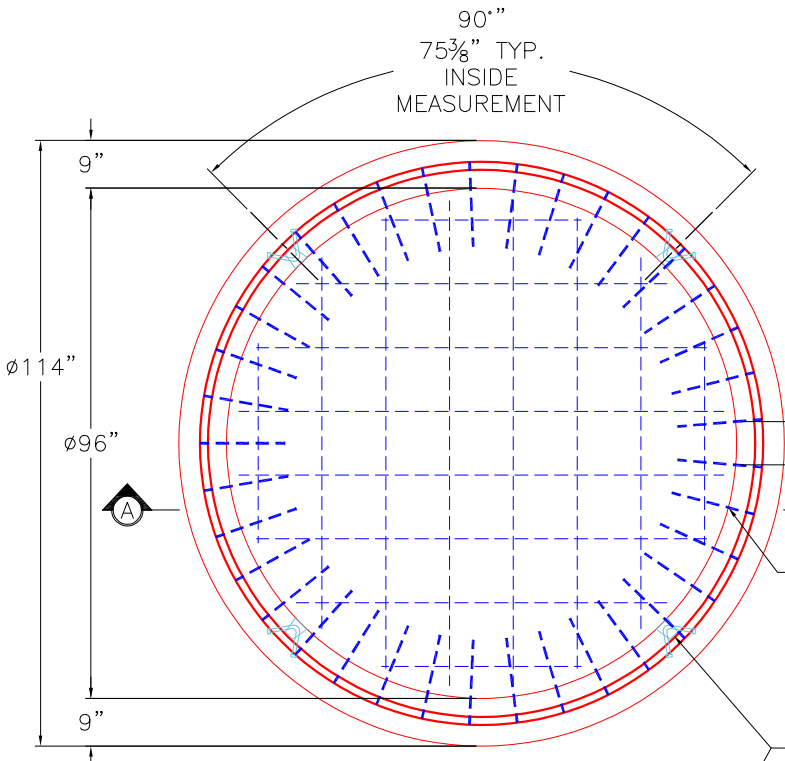
Structure Total: 58960 lb

Rim: 740.87' Rim to Invert: 8.37' Slack: 8.44" Sump: 82" Step Position:

**GENERAL NOTES:**

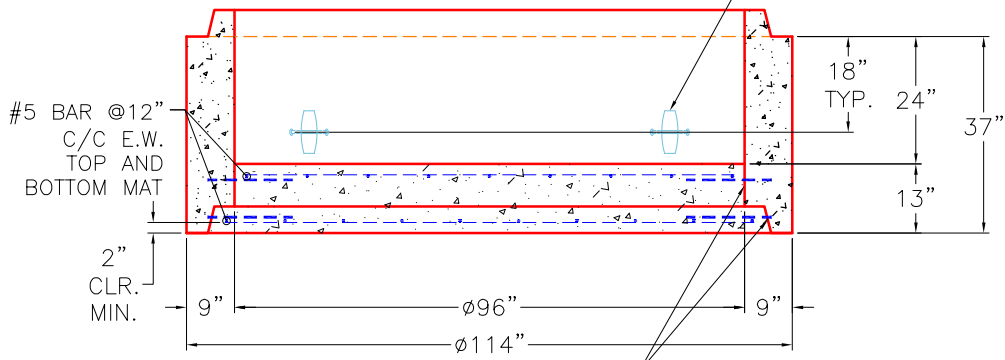
1. MANUFACTURED TO ASTM C-478 (LATEST REVISION).
2. CONCRETE 5,000 PSI AT 28 DAYS.
3. REINFORCING: WALLS - WWF AREA 0.24 FLOOR - AREA 0.27 - #5 BAR @ 12" C/C TOP AND BOTTOM MAT.
4. WEIGHT: TOTAL - 17,113 LBS.  
 FIRST POUR - 9,216 LBS  
 SECOND POUR - 7,897 LBS
5. JOINT SEAL: CONCRETE SEALANTS INC. CS-102.
6. ICAST TO INSTALL INTERNAL BRACKETS.
7. CONTECH'S LOGO AS WELL AS THE INLETS AND OUTLETS MUST BE STENCILED ONTO THE STRUCTURE.

**SECOND POUR DRAWING**



**TOP VIEW**

8 C-C TYP. INSIDE MEASUREMENT  
 DOWEL IN (74) 16" LONG #5 BAR (GRADE 60) 8" C-C TOP AND BOTTOM MAT. 4" MIN. PENETRATION INTO THE WALLS REQUIRED.  
 4 EA. CONAC 6CA14 ANCHORS REQUIRED FOR HANDLING.



**SECTION A-A**

TWO LAYERS OF CS-231 REQUIRED PRIOR TO POURING THE FLOOR

Coating (Int): Coating (Ext):	Seam Up: Tongue Seam Dn: n/a	Wall Thickness: 9" Floor Height: 13"	Height (Int): 24" Height (Ext): 37"	Weight (Net): 17113 lb Volume (Net): 4.37cu.yd
----------------------------------	---------------------------------	---	--	---