



Structure ID: 18IN EQ SF HW 1

P1 HWPC1423

23" x 14" - SLOPED & FLARED HEADWALL (ELL. RCP) F/F

DIMENSIONS & QUANTITIES

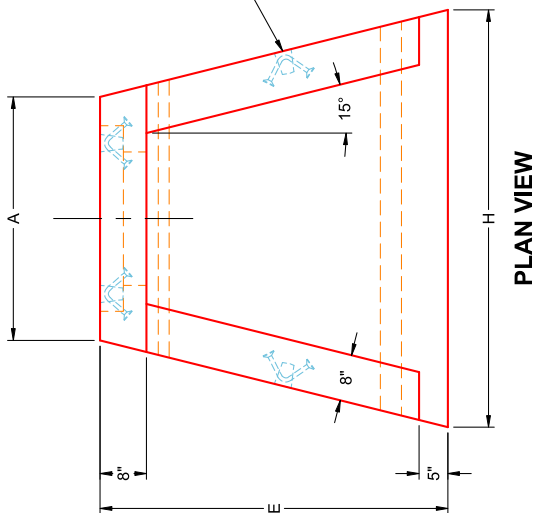
PIPE Ø	A	B	C	D	E	F	G	H	WEIGHT
14" X 23"	3'-6"	4'-4"	2'-10"	1'-6"	5'-0"	4"	3/4"	6'-0"	5,127 LBS

GENERAL NOTES:

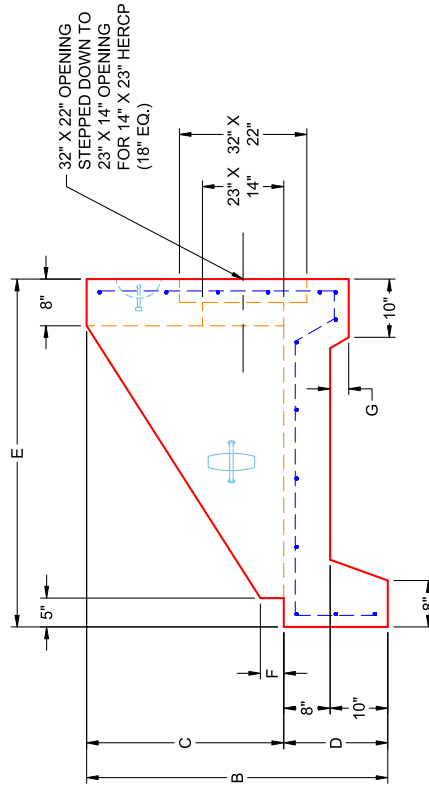
1. CONCRETE: 4,500 PSI/AT 28 DAYS
2. REINFORCING: #4 BAR @ 12" C.C. E.W. (GRADE 60) WITH 2" CONCRETE COVER MINIMUM
3. REINFORCING BARS TO BE TACK WELDED OR TIED
4. DRAWING TO BE USED IN CONJUNCTION WITH KYTC STD. DRAWING RDH-020-03 & THE STANDARD SPECIFICATIONS FOR ROAD & BRIDGE CONSTRUCTION
5. 3/4" CHAMFER ON ALL EXPOSED EDGES

STANDARD 24" SLOPED & FLARED HEADWALL BUT WITH 32" X 22" OPENING STEPPED DOWN TO 23" X 14" OPENING FOR 14" X 23" HERCP (18" EQ.)

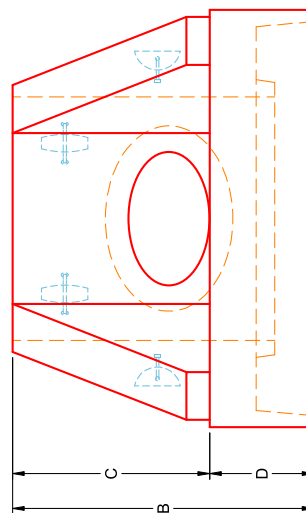
4 EA. 4CA14 CONAC A-ANCHORS FOR PLANT & FIELD HANDLING



PLAN VIEW



SIDE VIEW



FRONT VIEW

PRODUCTION WORK ORDER

DESCRIPTION: 14" X 23" (18" EQ.) SLOPED & FLARED HEADWALL
CUSTOMER: CORE & MAIN LP
PROJECT: PO 2731599
STRUCTURE: 18IN EQ SF HW 1
ORDER NO: 26-1016
PE: J.H. ROSS
DATE: 01/06/26
SCALE: NTS
PG: 1 OF 1

PRODUCT I.D.: HWPC1423
PRODUCT VIEW: RIGHT SIDE UP
PLANT: BEAVER DAM, KY
WEIGHT: 5,127 LBS
TOP SECTION JOINT: N/A
BASE SECTION JOINT: N/A
QC CHECK INITIALS:

<p>QUALITY CONTROL CHECKLIST</p> <p><input type="checkbox"/> ALL DIMENSIONS CORRECT.</p> <p><input type="checkbox"/> LIFTERS INSTALLED.</p> <p><input type="checkbox"/> OPENING CENTERED.</p> <p><input type="checkbox"/> REINFORCING CORRECT.</p> <p><input type="checkbox"/> SURFACE QUALITY ACCEPTABLE.</p> <p><input type="checkbox"/> EDGES CHAMFERED.</p> <p><input type="checkbox"/> ALL PATCHWORK ACCEPTABLE.</p>
--

